



# HTNG Product Distribution Rates Specification Version 2.2

31 October 2014

## About HTNG

Hotel Technology Next Generation (HTNG) is a non-profit association with a mission to foster, through collaboration and partnership, the development of next-generation systems and solutions that will enable hoteliers and their technology vendors to do business globally in the 21st century; to be recognized as a leading voice of the global hotel community, articulating the technology requirements of hotel companies of all sizes to the vendor community; and to facilitate the development of technology models for hospitality that will foster innovation, improve the guest experience, increase the effectiveness and efficiency of hotels, and create a healthy ecosystem of technology suppliers.

Copyright 2014, Hotel Technology Next Generation

All rights reserved.

No part of this publication may be reproduced, stored in a retrieval system, or transmitted, in any form or by any means, electronic, mechanical, photocopying, recording, or otherwise, without the prior permission of the copyright owner.

For any software code contained within this specification, permission is hereby granted, free-of-charge, to any person obtaining a copy of this specification (the "Software"), to deal in the Software without restriction, including without limitation the rights to use, copy, modify, merge, publish, distribute, sublicense, and/or sell copies of the Software, and to permit persons to whom the Software is furnished to do so, subject to the above copyright notice and this permission notice being included in all copies or substantial portions of the Software.

Manufacturers and software providers shall not claim compliance with portions of the requirements of any HTNG specification or standard, and shall not use the HTNG name or the name of the specification or standard in any statements about their respective product(s) unless the product(s) is (are) certified as compliant to the specification or standard.

THE SOFTWARE IS PROVIDED "AS IS", WITHOUT WARRANTY OF ANY KIND, EXPRESS OR IMPLIED, INCLUDING BUT NOT LIMITED TO THE WARRANTIES OF MERCHANTABILITY, FITNESS FOR A PARTICULAR PURPOSE, AND NON-INFRINGEMENT. IN NO EVENT SHALL THE AUTHORS OR COPYRIGHT HOLDERS BE LIABLE FOR ANY CLAIM, DAMAGES, OR OTHER LIABILITY, WHETHER IN AN ACTION OF CONTRACT, TORT OR OTHERWISE, ARISING FROM, OUT OF, OR IN CONNECTION WITH THE SOFTWARE OR THE USE OR OTHER DEALINGS IN THE SOFTWARE.

Permission is granted for implementers to use the names, labels, etc. contained within the specification. The intent of publication of the specification is to encourage implementations of the specification.

This specification has not been verified for avoidance of possible third-party proprietary rights. In implementing this specification, usual procedures to ensure the respect of possible third-party intellectual property rights should be followed. Visit <http://htng.org/ip-claims> to view third-party claims that have been disclosed to HTNG. HTNG offers no opinion as to whether claims listed on this site may apply to portions of this specification.

The names Hotel Technology Next Generation and HTNG, and logos depicting these names, are trademarks of Hotel Technology Next Generation. Permission is granted for implementers to use the aforementioned names in technical documentation for the purpose of acknowledging the copyright and including the notice required above. All other use of the aforementioned names and logos requires the permission of Hotel Technology Next Generation, either in written form or as explicitly permitted for the organization's members through the current terms and conditions of membership.

# Table of contents

VERSION 2.2 .....	1
31 OCTOBER 2014 .....	1
<b>1 THIS SPECIFICATION AT A GLANCE.....</b>	<b>5</b>
<b>2 DOCUMENT INFORMATION .....</b>	<b>6</b>
2.1 DOCUMENT HISTORY .....	6
2.2 DOCUMENT PURPOSE .....	7
2.3 SCOPE .....	7
2.4 RELATIONSHIP TO OTHER STANDARDS.....	7
2.5 USEFUL RESOURCES.....	8
2.6 AUDIENCE.....	8
2.7 OVERVIEW .....	8
2.8 FURTHER CONSIDERATIONS.....	8
<b>3 COMPONENT SCENARIOS.....</b>	<b>9</b>
3.1 UPDATE RATE PLANS.....	9
3.1.1 <i>Overview.....</i>	<i>9</i>
3.1.2 <i>Roles.....</i>	<i>11</i>
3.1.3 <i>Use Case.....</i>	<i>11</i>
3.1.4 <i>Message Flows .....</i>	<i>12</i>
3.1.5 <i>New Rate Plan .....</i>	<i>12</i>
3.1.6 <i>Derivative Rate Plan.....</i>	<i>14</i>
3.1.7 <i>Deactivate(d) Rate Plan.....</i>	<i>15</i>
3.1.8 <i>Delta Rate Plan.....</i>	<i>16</i>
3.1.9 <i>Overlay Rate Plan .....</i>	<i>18</i>
3.1.10 <i>Delete Rate Plan .....</i>	<i>20</i>
3.1.11 <i>Communicate Length of Stay Based Rate Amounts.....</i>	<i>23</i>
3.2 GET RATE PLANS.....	25
3.2.1 <i>Overview.....</i>	<i>25</i>
3.2.2 <i>Roles.....</i>	<i>25</i>
3.2.3 <i>Use Case.....</i>	<i>25</i>
3.2.4 <i>Message Flows .....</i>	<i>26</i>
3.2.5 <i>Get Rate Plan by Rate Plan Code.....</i>	<i>26</i>
<b>4 MESSAGES.....</b>	<b>28</b>
4.1 UPDATE RATES .....	28
4.1.1 <i>Data Element Table – Update Rates Request.....</i>	<i>28</i>
4.1.2 <i>Data Element Table – Update Rates Response .....</i>	<i>40</i>
4.2 HOTEL RATE PLAN.....	41
4.2.1 <i>Data Element Table – Hotel Rate Plan Request.....</i>	<i>41</i>

---

4.2.2	<i>Data Element Table – Hotel Rate Plan Response .....</i>	<i>43</i>
<b>5</b>	<b>APPENDICES .....</b>	<b>57</b>
5.1	GLOSSARY OF TERMS.....	57
5.2	REFERENCED DOCUMENTS .....	57

## 1 This Specification at a Glance

This specification details a set of core services and a schema to be used in the exchange of Rate information between systems.

The Rate use cases covered in this document include the following:

- Update Rate Plans
  - New Rate Plan
  - Derivative Rate Plan
  - Deactivate(d) Rate Plan
  - Delta Rate Plan
  - Overlay Rate Plan
  - Delete Rate Plan
  - Communicate Length of Stay Based Rate Amounts
- Get Rate Plans (Get Rate Plan by Rate Plan Code)

## 2 Document Information

### 2.1 Document History

Version	Date	Author	Comments
1.0	Feb 2007	Product Distribution (PD) Workgroup	Includes Update Rates and Update Group Rates.
1.0	Apr 2008	PD Workgroup	Added to comprehensive Product Distribution document (Reservations, Availability, Statistics, Groups, Rates specs combined); addition of business process section. Note: version number did not change.
1.1	Apr 2009	PD Workgroup	Addition of Error Handling Appendix.
1.1	Sep 2009	PD Workgroup	Added Hotel Rate Plan, Update Group Rates. Note: document should have been versioned 1.2.
1.2	Apr 2010	PD Workgroup	Added examples: new, delta, overlay, remove, derivative rate plan, deactivate rate plan.
1.3	Oct 2011	PD Workgroup	Added age bucket handling.
1.4	Apr 2012	PD Workgroup	Allowed CurrencyCode and YieldableIndicator attributes at RatePlan level.
1.5	Oct 2012	PD Workgroup	Enhancements, corrections and documentation improvements.
1.5.01-.02	Mar/Apr 2013	Kylene Reese	Organized spec content to be consistent with Availability spec.
1.5.03	8 Apr 2013	Jolene Bader, Alan Pine	Created Update Rates scenario.
1.5.04	12 Apr 2013	Kylene Reese	Continued to organized spec content to be consistent with Availability spec.
1.5.05	15 Apr 2013	PD Workgroup	Created Get Rates scenario, vetted sections 1 and 2.
1.5.06-.16	22 Apr - 10 Jun 2013	PD Workgroup	Updated sub-scenarios.
1.5.17	11 Jun 2013	Kylene Reese	Moved all Groups scenarios to the Groups spec.
1.5.18	20 Jun 2013	Kylene Reese	Moved Error Handling Appendix to its own

			document.
1.5.19	24 Jun 2013	PD Workgroup	Removed Get Rates sub-scenarios – this will only have one scenario.
1.5.20	25 Jun 2013	Robin Coker	Added Get Rates sample messages.
1.5.21– .23	Jul 2013	PD Workgroup	Finalized sample messages and data element tables.
1.5.24– .25	Sep 2013	Jay Rosamilia, PD Workgroup	Updated data element tables; made finishing touches.
1.90	19 Sep 2013	Kylene Reese	Prepared document for member review.
1.99	14 Oct 2013	Kylene Reese	Prepared document for workgroup vote.
2.0	Oct 2013	PD Workgroup	Prepared document for General Release.
2.01– 2.03	March 2014	PD Workgroup	Added Communicate Length of Stay Based Rate Amounts sub-scenario.
2.09	20 Mar 2014	Kylene Reese	Prepared spec for comment period.
2.099	09 Apr 2014	Kylene Reese	Prepared spec for workgroup vote.
2.1	18 April 2014	PD Workgroup	Publicly released spec with the added Communicate Length of Stay Based Rate Amounts sub-scenario.
2.1.01	05 May 2014	PD Workgroup	Addition of POS node

## 2.2 Document Purpose

This document defines the Hotel Technology Next Generation (HTNG) scenarios and business processes for exchanging rate messages based on OpenTravel Alliance messages. This document provides a framework for trading partners to define various attributes related to rate structures to be exchanged between systems.

## 2.3 Scope

This document defines a common HTNG implementation of the OpenTravel Alliance specifications for rate messages.

## 2.4 Relationship to Other Standards

This specification and its supporting schemas leverage the existing OpenTravel Alliance methodology for message construction and draw upon data definitions common to several HTNG specifications.

Related specifications:

- Outline of most recent versions of all HTNG Product Distribution specifications available on [workgroup's wiki page](#)
- [OpenTravel Alliance Specifications](#)

## 2.5 Useful Resources

- [Implementing Web Services Using HTNG Specifications – A Quick Start Guide for Software Developers](#)
- HTNG Discussion Board – currently available at <http://www2.htng.org/discussion>
- [Error Handling Appendix](#) – This is a companion document containing mandatory and optional error codes. This document is relevant when referring to warnings or errors, which are reported in message responses.

## 2.6 Audience

This document is designed as a guide for project managers, programmers and analysts to gain detailed information needed to implement the distribution of rate information between systems.

## 2.7 Overview

The OpenTravel Alliance messages contain a large number of optional fields, and the same information can be represented in a number of different ways.

The intent of the specification is to recommend a minimum common standard to represent complex data. The intent is also to avoid having to pass the same information in more than one field, thus avoiding confusion.

Trading partners may agree prior to implementation to use additional fields for data not covered in the scenario, including TPA extensions as per the OpenTravel Alliance schemas.

## 2.8 Further Considerations

The scenarios outlined provide a common starting point for the definition of the messages exchanged and that the implementers of these messages will:

1. Add expansions as needed to enable exchange of additional information while retaining compliance with the OpenTravel Alliance specifications.
2. Report expansions deemed common to HTNG for consideration as additional scenarios.
3. Report any missing elements or attributes to OpenTravel Alliance for inclusion in a future specification release.



## 3 Component Scenarios

Partners will be responsible for creating their own Quality Assurance Test Scripts.

The intent of the HTNG scenarios is to recommend a minimum common denominator and clarify what fields should be used to transfer the data required. The main aim is to avoid having to pass the same information in more than one field, thus avoiding confusion.

Trading partners may agree prior to implementation to use additional fields for data not covered in the scenario, including TPA extensions as per the OpenTravel Alliance specifications schema.

### A Note about required fields

In each of the scenarios below, sample request and response messages are provided. In each of these samples, **bold typeface** is used on some data values specific to a given scenario which differentiates it from other scenarios; these data values **MUST** be populated in addition to the required data as outlined in the corresponding Data Element Table.

### Rate Processing

Rates are usually managed in one system and passed on to other systems, such as rates being controlled centrally in the CRS and delivered to the Property Management Systems and other distribution channels. However, the rate notification message set (HotelRatePlanNotifRQ/RS) allows for rates to be managed in more than one system and updated in all systems that receive the notification.

As a rate is created, modified or deactivated in the system that controls rate management, a Hotel Rate Plan Notification message is sent to a booking system, indicating whether it is: (1) the initial announcement of a new rate plan, (2) an update of an active (bookable) rate plan or (3) a notification that a rate plan is no longer in effect and should be deactivated in the booking system.

New rate plans are broadcast through authorized channels of distribution determined by negotiated business agreements. Viewership is usually set up when a new rate plan code is negotiated and it defines the distribution channel for the rate plan, and the profile of the authorized booker(s). The distribution channels are indicated by a collection of System Codes.

## 3.1 Update Rate Plans

### 3.1.1 Overview

This process describes the interaction between systems where notification of changes to rates must be communicated. This scenario includes standard, corporate, consortia, negotiated, package, promotional and best available rates.

For the pulling of rates, see the [Get Rate Plans scenario](#).

## **Behavior**

The process being facilitated is that of exchanging rate information between systems [generally, but not exclusively, a Property Management System (PMS) and a Central Reservation System (CRS)].

Based on the type of information that needs to be exchanged, trading partners will select the appropriate scenario and fill in the Extensible Markup Language (XML) according to the guidelines provided in the specific scenario.

XML will then be sent to the appropriate webservice, and the correct response will be used for the selected profile. To facilitate the ease of troubleshooting, it is highly recommended that both the sending and receiving systems log communications.

## **Behavior Expected Prior to Transmission**

The behavior expected from a sending system will be:

- Usage of the appropriate profile for the type of information to be sent
- Translation of rate information into codes understood by the receiving system (if required)
- Provision of all fields classified as Mandatory in the profile
- Validation of XML message format
- Transmission of the XML to appropriate URL set up by the receiving system using the appropriate identification criteria (SOAP username and password provided by the receiving system)

## **Behavior Expected from Receiving System**

Upon receipt of the XML message the behavior expected from the receiving system will be:

- Process XML received by the sending system
- Update of hotel data with rate information contained in the XML sent by the sending system
- If update is not possible: create an error response as defined in the profile and transmit the response to the sending system
- Acknowledge successful/unsuccessful processing of the upload using the appropriate response message

## **Behavior Expected Upon Processing by Receiving System**

Once the initial request has been processed by the receiving system, the sending system will need to:

- Be able to evaluate error responses coming from the receiving system
- React to error responses as needed by modifying the XML and/or ensuring correct mapping tables are used

### 3.1.2 Roles

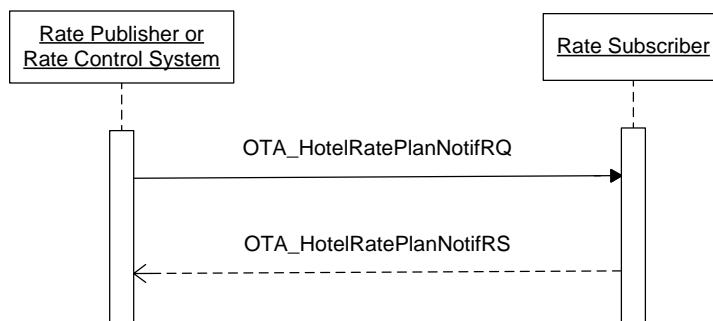
Role Name	Definition	Example
Rate Publisher OR Rate Control System	A system that maintains rates and notifies Rate Subscriber(s) of changes.	<ul style="list-style-type: none"><li>• Central Reservation System</li><li>• Property Management System</li><li>• Channel Management System</li><li>• Yield Management System</li></ul>
Rate Subscriber	A system that requires notification of rate data from Publisher system.	<ul style="list-style-type: none"><li>• Central Reservation System</li><li>• Property Management System</li><li>• Channel Management System</li><li>• Revenue Management System</li><li>• Online Travel Agent</li></ul>

### 3.1.3 Use Case

Assumptions:	<ul style="list-style-type: none"><li>• Publisher/Control System and Subscriber have agreed which attributes will be transmitted and accepted.</li><li>• Publisher/Control System and Subscriber have agreed upon a notification model (either real-time or timed interval).</li></ul>
Pre-condition:	None
Trigger:	A change to rate data occurs in the Rate Publisher System.
Basic Course of Events:	<ol style="list-style-type: none"><li>1. Rate Publisher/Control System constructs OTA_HotelRatePlanNotifRQ containing the rate data.</li><li>2. Rate Publisher/Control System successfully transmits message payload.</li><li>3. Rate Subscriber receives the message payload.</li><li>4. Rate Subscriber processes the OTA_HotelRatePlanNotifRQ.</li><li>5. Rate Subscriber acknowledges with the OTA_HotelRatePlanNotifRS indicating processing status of the message (including any relevant warnings).</li><li>6. Rate Publisher/Control System may update their database to log what was last successfully processed by the Subscriber.</li></ol>
Post-condition:	Rate Subscriber may update their log with what was last successfully processed.

Exception Path 1:	<ol style="list-style-type: none"> <li>1. At step 3, the Rate Subscriber does not successfully receive the message.</li> <li>2. Rate Subscriber does not return the OTA_HotelRatePlanNotifRS.</li> <li>3. Rate Publisher/Control System may: <ol style="list-style-type: none"> <li>a. Log the unsuccessful send.</li> <li>b. Resend the update notification immediately.</li> <li>c. Re-queue the update notification.</li> <li>d. Wait until the next agreed interval to send an update notification.</li> </ol> </li> </ol>
Exception Path 2:	<ol style="list-style-type: none"> <li>1. At Step 4, the Rate Subscriber does not successfully process the message.</li> <li>2. Rate Subscriber returns OTA_HotelRatePlanNotifRS with the appropriate error indicator.</li> <li>3. Rate Publisher/Control System may: <ol style="list-style-type: none"> <li>a. Log the response error.</li> <li>b. Take action to correct the error and/or resend the transaction if necessary.</li> <li>c. Re-queue the update notification.</li> <li>d. Wait until the next agreed interval to send an update notification.</li> </ol> </li> </ol>
Alternative Paths:	If the Subscriber wishes to take on role of <i>Rate Requester</i> , it then may perform <a href="#">Get Rate Plans</a> .

### 3.1.4 Message Flows



### 3.1.5 New Rate Plan

Defines the process between publisher and subscriber when a new rate plan is created. The message assumes a push model, with the publishing system pushing the data to the subscriber.

Specific to this message:

- MessageContentCode
- RatePlanNotifType = "New"

### 3.1.5.1 Sample Scenario

CRS "123" needs to transmit the following Rate download to PMS "ABC."

- Rate Plan Notif Type           New
- Message Content Code        8
- Hotel Code                    HXCAIZZ
- Rate plan                     DSC1
- MarketCode                  DISC
- Start date                    April 5, 2013
- End date                      September 2, 2013
- Short Description            Discount Rate 1
- Long Description             Discount Rate 1 – Room Only
- Currency                     USD
- Room Types                  KING and QUEEN
- Status                        Active

#### 3.1.5.1.1 Sample Request

```
<OTA_HotelRatePlanNotifRQ xmlns="http://www.opentravel.org/OTA/2003/05"
TimeStamp="2013-04-05T17:13:32.387" EchoToken="e921106b-0f51-4e5d-88fd-1146d336302a"
Target="Production" Version="1.001" MessageContentCode="8">
  <POS>
    <Source>
      <RequestorID Type="2" ID="123" />
    </Source>
  </POS>
  <RatePlans HotelCode="HXCAIZZ">
    <RatePlan RatePlanCode="DSC1" RatePlanNotifType="New" MarketCode="DISC"
Start="2013-04-05" End="2013-09-02">
      <Rates>
        <Rate Start="2013-04-05" End="2013-09-02" CurrencyCode="USD"
InvTypeCode="KING">
          <BaseByGuestAmts>
            <BaseByGuestAmt NumberOfGuests="1" AgeQualifyingCode="10"
AmountBeforeTax="98.00"/>
            <BaseByGuestAmt NumberOfGuests="2" AgeQualifyingCode="10"
AmountBeforeTax="98.00"/>
          </BaseByGuestAmts>
          <AdditionalGuestAmounts>
            <AdditionalGuestAmount AgeQualifyingCode="10" Amount="20.00"/>
            <AdditionalGuestAmount AgeQualifyingCode="8" Amount="12.00"/>
          </AdditionalGuestAmounts>
        </Rate>
        <Rate Start="2013-04-05" End="2013-09-02" CurrencyCode="USD"
InvTypeCode="QUEEN">
          <BaseByGuestAmts>
            <BaseByGuestAmt NumberOfGuests="1" AgeQualifyingCode="10"
AmountBeforeTax="98.00"/>
            <BaseByGuestAmt NumberOfGuests="2" AgeQualifyingCode="10"
AmountBeforeTax="98.00"/>
          </BaseByGuestAmts>
          <AdditionalGuestAmounts>
            <AdditionalGuestAmount AgeQualifyingCode="10" Amount="20.00"/>
            <AdditionalGuestAmount AgeQualifyingCode="8" Amount="12.00"/>
          </AdditionalGuestAmounts>
        </Rate>
      </Rates>
    </RatePlan>
  </RatePlans>
</OTA_HotelRatePlanNotifRQ>
```

```

        </AdditionalGuestAmounts>
    </Rate>
</Rates>
<Description Name="Short description">
    <Text>Discount Rate 1</Text>
</Description>
<Description Name="Long description">
    <Text>Discount Rate 1 - Room Only</Text>
</Description>
</RatePlan>
</RatePlans>
</OTA_HotelRatePlanNotifRQ>

```

### 3.1.5.1.2 Sample Response

```

<OTA_HotelRatePlanNotifRS xmlns="http://www.opentravel.org/OTA/2003/05"
TimeStamp="2013-04-05T17:13:32.387" EchoToken="e921106b-0f51-4e5d-88fd-1146d336302a"
Target="Production" Version="1.001">
    <Success/>
</OTA_HotelRatePlanNotifRS>

```

## 3.1.6 Derivative Rate Plan

This message defines the process between publisher and subscriber when a Derivative Rate needs to be managed. Derivative Rates are those whose values are calculated by their association to another rate plan.

Specific to this message:

- BaseRatePlanCode
- AdjustedPercentage or AdjustedAmount
- AdjustUpIndicator

### 3.1.6.1 Sample Scenario

The Seaside Village Hotel needs to notify their voice call center of a new rate plan which is a derivative of existing rate plan.

- The rate plan, AARP is valid from May 19, 2013 through December 31, 2013.
- AARP is 10 percent off the rate plan 'BAR.'
- The minimum length of stay is 1 night and the maximum is 10 nights.
- If the stay is over 10 nights, the 'RACK' rate plan should be used.

#### 3.1.6.1.1 Sample Request

```

<OTA_HotelRatePlanNotifRQ xmlns="http://www.opentravel.org/OTA/2003/05"
TimeStamp="2013-04-02T10:30:43-05:00" EchoToken="0f90726f-cf2e-44fa-bbc2-f65b88dd9007"
Target="Production" Version="1.001" MessageContentCode="8">
    <POS>
        <Source>
            <RequestorID Type="10" ID="SEASID" />
        </Source>
    </POS>
    <RatePlans HotelCode="ABC123">
        <RatePlan CurrencyCode="USD" RatePlanCode="AARP" RatePlanCategory="DISC"
Start="2013-05-19" End="2013-12-31" YieldableIndicator="false" MarketCode="ZZ"
BaseRatePlanCode="BAR" AdjustedPercentage="10" AdjustUpIndicator="0"
RatePlanNotifType="New" RatePlanStatusType="Active" ExtraNightRatePlanCode="RACK">
            <Description Name="Short Description">
                <Text>AARP Rate</Text>
            </Description>

```

```
<Description Name="Long Description">
  <Text>You must present your valid AARP membership card upon check in</Text>
</Description>
<BookingRules>
  <BookingRule>
    <LengthsOfStay>
      <LengthOfStay MinMaxMessageType="SetMinLOS" Time="1" TimeUnit="Day" />
      <LengthOfStay MinMaxMessageType="SetMaxLOS" Time="10"
TimeUnit="Day" />
    </LengthsOfStay>
  </BookingRule>
</BookingRules>
</RatePlan>
</RatePlans>
</OTA_HotelRatePlanNotifRQ>
```

### 3.1.6.1.2 Sample Response

```
<OTA_HotelRatePlanNotifRS xmlns="http://www.opentravel.org/OTA/2003/05"
TimeStamp="2013-04-02T10:30:43-05:00" EchoToken="0f90726f-cf2e-44fa-bbc2-f65b88dd9007"
Target="Production" Version="1.001">
  <Success/>
</OTA_HotelRatePlanNotifRS>
```

### 3.1.7 Deactivate(d) Rate Plan

This message defines the process between publisher and subscriber when either a rate plan must be created, but is not yet ready for sale, or when a rate plan has already been created, and needs to be deactivated. Subsequent updates may populate additional data and make it available for sale.

Specific to this message:

- RatePlanStatusType must be Deactivated
- RatePlanNotifType

#### 3.1.7.1 Sample Scenario

The Seaside Village Hotel needs to notify their voice call center of a rate plan which they need deactivated.

##### 3.1.7.1.1 Sample Request

```
<OTA_HotelRatePlanNotifRQ xmlns="http://www.opentravel.org/OTA/2003/05"
TimeStamp="2013-04-02T10:30:47-05:00" EchoToken="255f6332-375a-451b-9271-72a778177e2e"
Target="Production" Version="1.001" MessageContentCode="8">
  <POS>
    <Source>
      <RequestorID Type="10" ID="SEASID" />
    </Source>
  </POS>
  <RatePlans HotelCode="ABC123">
    <RatePlan CurrencyCode="USD" RatePlanCode="AARP" RatePlanCategory="DISC"
Start="2013-05-19" End="2013-12-31" YieldableIndicator="false" MarketCode="ZZ"
BaseRatePlanCode="BAR" AdjustedPercentage="10" AdjustUpIndicator="0"
RatePlanNotifType="New" RatePlanStatusType="Deactivated" ApplyDynamicPricing="False"
ExtraNightRatePlanCode="RACK">
      <Description Name="Short Description">
        <Text>AARP Rate</Text>
      </Description>
      <Description Name="Long Description">
        <Text>You must present your valid AARP membership card upon check in</Text>
```

```
</Description>
<BookingRules>
  <BookingRule>
    <LengthsOfStay>
      <LengthOfStay MinMaxMessageType="SetMinLOS" Time="1" TimeUnit="Day" />
      <LengthOfStay MinMaxMessageType="SetMaxLOS" Time="10"
TimeUnit="Day" />
    </LengthsOfStay>
  </BookingRule>
</BookingRules>
</RatePlan>
</RatePlans>
</OTA_HotelRatePlanNotifRQ>
```

### 3.1.7.1.2 Sample Response

```
<OTA_HotelRatePlanNotifRS xmlns="http://www.opentravel.org/OTA/2003/05"
TimeStamp="2013-04-02T10:30:47-05:00" EchoToken="255f6332-375a-451b-9271-72a778177e2e"
Target="Production" Version="1.001">
  <Success/>
</OTA_HotelRatePlanNotifRS>
```

### 3.1.8 Delta Rate Plan

Defines the process between publisher and subscriber when an existing rate plan is updated. The message assumes a push model, with the publishing system pushing the data to the subscriber.

Note: it is up to the trading partners to determine to what degree of granularity an update will be applied or is to be represented. *For instance, if only the single occupancy rate has changed, it may be required to represent the full picture of the Rate Period: Single, Double, Triple, Quadruple, Additional Adult and Child Rates for the given Dates and Room Type.*

Specific to this message:

- RatePlanNotifType = "Delta"
- RatePlanCode
- Only the data which has changed is present in the message. This varies depending on what information has changed.

#### 3.1.8.1 Sample Scenario for Update Rate Amounts

The Seaside Village Hotel has increased the rates for a specific Room Type and Dates on the Discount Rate 1 and needs to notify their voice call center of this change. All other information regarding the rate plan is remaining the same, therefore the RatePlanNotifType of 'Delta' is sent rather than an Overlay.

- The rates for the room type QUEEN from July 1, 2013 through July 8, 2013 are now as follows:
  - Single Occupancy – \$124.00 US
  - Double Occupancy– \$124.00 US
  - Additional Adult – \$20.00 US



- Child – \$12.00 US

#### 3.1.8.1.1 Sample Request

```
<OTA_HotelRatePlanNotifRQ xmlns="http://www.opentravel.org/OTA/2003/05"
TimeStamp="2013-05-18T17:13:32.387" EchoToken="1b55549c-63e9-4aa6-81e8-88c9528ac99e"
Target="Production" Version="1.001">
  <POS>
    <Source>
      <RequestorID Type="10" ID="SEASID" />
    </Source>
  </POS>
  <RatePlans HotelCode="HXCAIZZ">
    <RatePlan RatePlanCode="DSC1" RatePlanNotifType="Delta">
      <Rates>
        <Rate Start="2013-07-01" End="2013-07-08" CurrencyCode="USD"
InvTypeCode="QUEEN">
          <BaseByGuestAmts>
            <BaseByGuestAmt NumberOfGuests="1" AgeQualifyingCode="10"
AmountBeforeTax="124.00"/>
            <BaseByGuestAmt NumberOfGuests="2" AgeQualifyingCode="10"
AmountBeforeTax="124.00"/>
          </BaseByGuestAmts>
          <AdditionalGuestAmounts>
            <AdditionalGuestAmount AgeQualifyingCode="10" Amount="20.00"/>
            <AdditionalGuestAmount AgeQualifyingCode="8" Amount="12.00"/>
          </AdditionalGuestAmounts>
        </Rate>
      </Rates>
    </RatePlan>
  </RatePlans>
</OTA_HotelRatePlanNotifRQ>
```

#### 3.1.8.1.2 Sample Response

```
<OTA_HotelRatePlanNotifRS xmlns="http://www.opentravel.org/OTA/2003/05"
TimeStamp="2013-05-18T17:13:32.387" EchoToken="1b55549c-63e9-4aa6-81e8-88c9528ac99e"
Target="Production" Version="1.001">
  <Success/>
</OTA_HotelRatePlanNotifRS>
```

#### 3.1.8.2 Sample Scenario for Update Booking Rules

The Seaside Village Hotel no longer allows arrival on Fridays or Saturdays on the Discount Rate 1 and needs to notify their voice call center of this change. All other information regarding the rate plan is remaining the same, therefore the RatePlanNotifType of 'Delta' is sent rather than an Overlay.

Rate Plan Code DSC1 update is as follows:

- Arrival allowed:
  - Sunday – Thursday
- Arrival not allowed (Closed to Arrival):
  - Friday – Saturday

#### 3.1.8.2.1 Sample Request

```
<OTA_HotelRatePlanNotifRQ xmlns="http://www.opentravel.org/OTA/2003/05"
TimeStamp="2013-06-13T08:58:22.419" EchoToken="329fb2fd-61c1-4517-b953-39dab6b2ac94"
Target="Production" Version="1.001" MessageContentCode="8">
  <POS>
    <Source>
      <RequestorID Type="10" ID="SEASID" />
    </Source>
  </POS>
</OTA_HotelRatePlanNotifRQ>
```

```
</POS>
<RatePlans HotelCode="HXCAIZZ">
  <RatePlan RatePlanCode="DSC1" RatePlanNotifType="Delta">
    <BookingRules>
      <BookingRule>
        <DOW_Restrictions>
          <ArrivalDaysOfWeek Sat="0" Sun="1" Mon="1" Tue="1" Weds="1" Thur="1"
Fri="0"/>
        </DOW_Restrictions>
      </BookingRule>
    </BookingRules>
  </RatePlan>
</RatePlans>
</OTA_HotelRatePlanNotifRQ>
```

### 3.1.8.2.2 Sample Response

```
<OTA_HotelRatePlanNotifRS xmlns="http://www.opentravel.org/OTA/2003/05"
TimeStamp="2013-06-13T08:58:22.419" EchoToken="329fb2fd-61c1-4517-b953-39dab6b2ac94"
Target="Production" Version="1.001">
  <Success/>
</OTA_HotelRatePlanNotifRS>
```

### 3.1.9 Overlay Rate Plan

Defines the process between publisher and subscriber when an existing rate plan is overlaid. The message assumes a push model, with the publishing system pushing the data to the subscriber. In this case, all the data is present in the message so that if the Rate Plan does not exist on the subscriber system it can be created; otherwise it functions a Resync of all data for the given Rate Plan to the subscriber system.

Specific to this message:

- RatePlanNotifType = "Overlay"
- RatePlanCode
- All data related to the Rate Plan is present, even if the data has not changed from initial creation (New).

#### 3.1.9.1 Sample Scenario

CRS "123" resyncs Discount Rate 1 to PMS "ABC:"

- Rate plan DSC1
- MarketCode DISC
- Booking Rules – Allow Arrival On: Sunday–Thursday
- Currency USD
- Room Type KING
- Rates from April 5, 2013 through September 2, 2013
  - Single Occupancy – \$98.00 USD
  - Double Occupancy– \$98.00 USD
  - Additional Adult – \$20.00 USD
  - Child – \$12.00 USD
- Room Type QUEEN

Rates from April 5, 2013 through June 30, 2013

- o Single Occupancy – \$98.00 USD
- o Double Occupancy– \$98.00 USD
- o Additional Adult – \$20.00 USD
- o Child – \$12.00 USD

Rates from July 1, 2013 through July 8, 2013

- o Single Occupancy – \$124.00 USD
- o Double Occupancy– \$124.00 USD
- o Additional Adult – \$20.00 USD
- o Child – \$12.00 USD

Rates from July 9, 2013 through September 2, 2013

- o Single Occupancy – \$98.00 USD
- o Double Occupancy– \$98.00 USD
- o Additional Adult – \$20.00 USD
- o Child – \$12.00 USD

- Short Description Discount Rate 1
- Long Description Discount Rate 1 – Room Only

### 3.1.9.1.1 Sample Request

```
<OTA_HotelRatePlanNotifRQ xmlns="http://www.opentravel.org/OTA/2003/05"
TimeStamp="2013-06-17T13:41:39.002" EchoToken="c4060a45-f15d-4f3f-aa40-fd3a0e1d6393"
Target="Production" Version="1.001" MessageContentCode="8">
  <POS>
    <Source>
      <RequestorID Type="2" ID="123" />
    </Source>
  </POS>
  <RatePlans HotelCode="HXCAIZZ">
    <RatePlan RatePlanCode="DSC1" RatePlanNotifType="Overlay" MarketCode="DISC">
      <BookingRules>
        <BookingRule>
          <DOW_Restrictions>
            <ArrivalDaysOfWeek Sat="0" Sun="1" Mon="1" Tue="1" Weds="1" Thur="1"
            Fri="0" />
          </DOW_Restrictions>
        </BookingRule>
      </BookingRules>
      <Rates>
        <Rate Start="2013-04-05" End="2013-09-02" CurrencyCode="USD"
        InvTypeCode="KING">
          <BaseByGuestAmts>
            <BaseByGuestAmt NumberOfGuests="1" AgeQualifyingCode="10"
            AmountBeforeTax="98.00" />
            <BaseByGuestAmt NumberOfGuests="2" AgeQualifyingCode="10"
            AmountBeforeTax="98.00" />
          </BaseByGuestAmts>
          <AdditionalGuestAmounts>
            <AdditionalGuestAmount AgeQualifyingCode="10" Amount="20.00" />
            <AdditionalGuestAmount AgeQualifyingCode="8" Amount="12.00" />
          </AdditionalGuestAmounts>
        </Rate>
        <Rate Start="2013-04-05" End="2013-06-30" CurrencyCode="USD"
        InvTypeCode="QUEEN">
          <BaseByGuestAmts>
            <BaseByGuestAmt NumberOfGuests="1" AgeQualifyingCode="10"
            AmountBeforeTax="98.00" />
          </BaseByGuestAmts>
        </Rate>
      </Rates>
    </RatePlan>
  </RatePlans>
</OTA_HotelRatePlanNotifRQ>
```

```

        <BaseByGuestAmt NumberOfGuests="2" AgeQualifyingCode="10"
AmountBeforeTax="98.00"/>
      </BaseByGuestAmts>
      <AdditionalGuestAmounts>
        <AdditionalGuestAmount AgeQualifyingCode="10" Amount="20.00"/>
        <AdditionalGuestAmount AgeQualifyingCode="8" Amount="12.00"/>
      </AdditionalGuestAmounts>
    </Rate>
    <Rate Start="2013-07-01" End="2013-07-08" CurrencyCode="USD"
InvTypeCode="QUEEN">
      <BaseByGuestAmts>
        <BaseByGuestAmt NumberOfGuests="1" AgeQualifyingCode="10"
AmountBeforeTax="124.00"/>
        <BaseByGuestAmt NumberOfGuests="2" AgeQualifyingCode="10"
AmountBeforeTax="124.00"/>
      </BaseByGuestAmts>
      <AdditionalGuestAmounts>
        <AdditionalGuestAmount AgeQualifyingCode="10" Amount="20.00"/>
        <AdditionalGuestAmount AgeQualifyingCode="8" Amount="12.00"/>
      </AdditionalGuestAmounts>
    </Rate>
    <Rate Start="2013-07-09" End="2013-09-02" CurrencyCode="USD"
InvTypeCode="QUEEN">
      <BaseByGuestAmts>
        <BaseByGuestAmt NumberOfGuests="1" AgeQualifyingCode="10"
AmountBeforeTax="98.00"/>
        <BaseByGuestAmt NumberOfGuests="2" AgeQualifyingCode="10"
AmountBeforeTax="98.00"/>
      </BaseByGuestAmts>
      <AdditionalGuestAmounts>
        <AdditionalGuestAmount AgeQualifyingCode="10" Amount="20.00"/>
        <AdditionalGuestAmount AgeQualifyingCode="8" Amount="12.00"/>
      </AdditionalGuestAmounts>
    </Rate>
  </Rates>
  <Description Name="Short Description">
    <Text>Discount Rate 1</Text>
  </Description>
  <Description Name="Long Description">
    <Text>Discount Rate 1 - Room Only</Text>
  </Description>
</RatePlan>
</RatePlans>
</OTA_HotelRatePlanNotifRQ>

```

### 3.1.9.1.2 Sample Response

```

<OTA_HotelRatePlanNotifRS xmlns="http://www.opentravel.org/OTA/2003/05"
TimeStamp="2013-06-17T13:41:39.002" EchoToken="c4060a45-f15d-4f3f-aa40-fd3a0e1d6393"
Target="Production" Version="1.001">
  <Success/>
</OTA_HotelRatePlanNotifRS>

```

### 3.1.10 Delete Rate Plan

This message defines the process between publisher and subscriber when a rate plan will never again be offered for sale and must be deleted from the subscriber system. This is driven by the presence of only a Rate Plan with remove indicator.

Specific to this message:

- RatePlanNotifType = "Remove"
- RatePlanStatusType = "Deactivated"
- RatePlanCode

### **3.1.10.1 Sample Scenario for Delete Rate Plan**

The Seaside Village Hotel has decided to no longer offer the Triple A Rate Plan through this subscriber. In this case the RatePlanNotifType 'Remove' is used with the Rate Plan Code only to indicate the Rate Plan should be deleted from the subscriber's system.

#### **3.1.10.1.1 Sample Request**

```
<OTA_HotelRatePlanNotifRQ xmlns="http://www.opentravel.org/OTA/2003/05"
TimeStamp="2013-05-19T10:30:47-05:00" EchoToken="b01693e8-4957-4e1b-a215-de5caa48fffb"
Target="Production" Version="1.001" MessageContentCode="8">
  <POS>
    <Source>
      <RequestorID Type="2" ID="SEASID" />
    </Source>
  </POS>
  <RatePlans HotelCode="ABC123">
    <RatePlan RatePlanCode="AAA" Start="2013-08-01" End="2013-05-18"
    RatePlanStatusType="Deactivated" RatePlanNotifType="Remove">
    </RatePlan>
  </RatePlans>
</OTA_HotelRatePlanNotifRQ>
```

#### **3.1.10.1.2 Sample Response**

```
<OTA_HotelRatePlanNotifRS xmlns="http://www.opentravel.org/OTA/2003/05"
TimeStamp="2013-05-19T10:30:47-05:00" EchoToken="b01693e8-4957-4e1b-a215-de5caa48fffb"
Target="Production" Version="1.001">
  <Success/>
</OTA_HotelRatePlanNotifRS>
```

### **3.1.10.2 Sample Scenario for Delete Room Type from Rate Plan**

This message defines the process between publisher and subscriber when a room type is no longer offered for sale on the given rate plan and therefore the product should be removed from the subscriber system. This is driven by the presence of the affected Room Types with remove indicator.

Specific to this message:

- RatePlanNotifType = "Remove"
- RatePlanCode
- InvTypeCode is the only data present in Rate element

The Seaside Village Hotel has decided to no longer offer the the room types of STEKG and STEQN on the Triple A Rate Plan. In this case the RatePlanNotifType 'Remove' is used with the affected InvTypeCode(s) present.

#### **3.1.10.2.1 Sample Request**

```
<OTA_HotelRatePlanNotifRQ xmlns="http://www.opentravel.org/OTA/2003/05"
TimeStamp="2013-05-19T11:13:23-05:00" EchoToken="1e3837a9-0607-42e6-b927-4f7b189b3e77"
Target="Production" Version="1.001" MessageContentCode="8">
  <POS>
    <Source>
      <RequestorID Type="2" ID="SEASID" />
    </Source>
  </POS>
</OTA_HotelRatePlanNotifRQ>
```

```
</POS>
<RatePlans HotelCode="ABC123">
  <RatePlan RatePlanCode="AAA" RatePlanNotifType="Remove">
    <Rates>
      <Rate InvTypeCode="STEKG" />
      <Rate InvTypeCode="STEQN" />
    </Rates>
  </RatePlan>
</RatePlans>
</OTA_HotelRatePlanNotifRQ>
```

### 3.1.10.2.2 Sample Response

```
<OTA_HotelRatePlanNotifRS xmlns="http://www.opentravel.org/OTA/2003/05"
TimeStamp="2013-05-19T11:13:23-05:00" EchoToken="1e3837a9-0607-42e6-b927-4f7b189b3e77"
Target="Production" Version="1.001">
  <Success/>
</OTA_HotelRatePlanNotifRS>
```

### 3.1.10.3 Sample Scenario for Remove a Rate Period from Rate Plan

This message defines the process between publisher and subscriber when a rate plan will no longer be offered for sale for given date period(s) and therefore should be removed from the subscriber system. This is driven by the presence of the affected Dates and Room Types with remove indicator.

Specific to this message:

- RatePlanNotifType = "Remove"
- RatePlanCode
- InvTypeCode
- Start / End – either in Rate Plan element or Rate element, but not both.

The Seaside Village Hotel has decided to no longer offer the Triple A Rate Plan for the room types of DXLKG and DXLQN during the time period of August 1, 2013 through October 31, 2013. In this case the RatePlanNotifType 'Remove' is used with the affected Dates and all affected InvTypeCode(s) present. In this specific case, Dates are present in the Rate Plan element.

### 3.1.10.3.1 Sample Request

```
<OTA_HotelRatePlanNotifRQ xmlns="http://www.opentravel.org/OTA/2003/05"
TimeStamp="2013-05-19T12:44:19-05:00" EchoToken="73f76f9a-9d91-4a8a-9d46-31478dcb77f9"
Target="Production" Version="1.001" MessageContentCode="8">
  <POS>
    <Source>
      <RequestorID Type="2" ID="SEASID" />
    </Source>
  </POS>
  <RatePlans HotelCode="ABC123">
    <RatePlan RatePlanCode="AAA" Start="2013-08-01" End="2013-10-31"
    RatePlanNotifType="Remove">
      <Rates>
        <Rate InvTypeCode="DXLKG" />
        <Rate InvTypeCode="DXLQN" />
      </Rates>
    </RatePlan>
  </RatePlans>
</OTA_HotelRatePlanNotifRQ>
```

```
</RatePlans>  
</OTA_HotelRatePlanNotifRQ>
```

### 3.1.10.3.2 Sample Response

```
<OTA_HotelRatePlanNotifRS xmlns="http://www.opentravel.org/OTA/2003/05"  
TimeStamp="2013-05-19T12:44:19-05:00" EchoToken="73f76f9a-9d91-4a8a-9d46-31478dcb77f9"  
Target="Production" Version="1.001">  
  <Success/>  
</OTA_HotelRatePlanNotifRS>
```

### 3.1.10.4 Sample Scenario for Removal Rate Period Varies by Room Type

The Seaside Village Hotel has decided to no longer offer the Triple A Rate Plan for the room types of SUPKG during the time period of August 1, 2013 through October 31, 2013 and SUPN during the time period of November 1, 2013 through December 31, 2013. In this case, the RatePlanNotifType 'Remove' is used with the affected Dates and all affected InvTypeCode(s) present. In this specific case, Dates are present in the Rate element.

#### 3.1.10.4.1 Sample Request

```
<OTA_HotelRatePlanNotifRQ xmlns="http://www.opentravel.org/OTA/2003/05"  
TimeStamp="2013-05-19T12:44:59-05:00" EchoToken="3524b3cf-b35c-4f95-abaa-cfedf597edc1"  
Target="Production" Version="1.001" MessageContentCode="8">  
  <POS>  
    <Source>  
      <RequestorID Type="2" ID="SEASID" />  
    </Source>  
  </POS>  
  <RatePlans HotelCode="ABC123">  
    <RatePlan RatePlanCode="AAA" RatePlanNotifType="Remove">  
      <Rates>  
        <Rate InvTypeCode="SUPKG" Start="2013-08-01" End="2013-10-31" />  
        <Rate InvTypeCode="SUPQN" Start="2013-11-01" End="2013-12-31" />  
      </Rates>  
    </RatePlan>  
  </RatePlans>  
</OTA_HotelRatePlanNotifRQ>
```

#### 3.1.10.4.2 Sample Response

```
<OTA_HotelRatePlanNotifRS xmlns="http://www.opentravel.org/OTA/2003/05"  
TimeStamp="2013-05-19T12:44:59-05:00" EchoToken="3524b3cf-b35c-4f95-abaa-cfedf597edc1"  
Target="Production" Version="1.001">  
  <Success/>  
</OTA_HotelRatePlanNotifRS>
```

### 3.1.11 Communicate Length of Stay Based Rate Amounts

This message defines the process between publisher and subscriber when the publisher and subscriber both support length of stay based rate amounts. Unlike stay date based rate amounts where a single set of rate amounts exist for a date, length of stay based rate amounts specify a set of rate amounts for a date (arrival date) for a specific prospective length of stay. Length of stay based rate amounts can be communicated as total rate amounts for the stay or as average nightly rate amounts for the stay.

Specific to this message:

- RateTimeUnit = "FullDuration" (for total stay rate amounts)

### **3.1.11.1 Sample Scenario for Length of Stay Based Rate Amounts (Total Rate Amounts for the Stay)**

The Seaside Village Hotel needs to communicate rate amounts for a rate by Length of Stay as total rate amounts for the Stay. The start to end date range is based upon the ArrivalDate. Use a RateTimeUnit of *FullDuration* to specify the full stay price and MinLOS and MaxLOS to specify length of stay (price is for full stay with length of stay of 3 nights).

- The total rates for a 1 night stay for the room type QUEEN for July 1, 2013 are as follows:
  - Single Occupancy – \$124.00 US
  - Double Occupancy– \$124.00 US
  - Additional Adult – \$20.00 US
  - Child – \$12.00 US
- The total rates for a 2 night stay for the room type QUEEN for July 1, 2013 are as follows:
  - Single Occupancy – \$238.00 US
  - Double Occupancy– \$238.00 US
  - Additional Adult – \$40.00 US
  - Child – \$24.00 US
- The total rates for a 3 night stay for the room type QUEEN for July 1, 2013 are as follows:
  - Single Occupancy – \$342.00 US
  - Double Occupancy – \$342.00 US
  - Additional Adult – \$60.00 US
  - Child – \$36.00 US

```
<Rates>
  <Rate RateTimeUnit="FullDuration" MinLOS="1" MaxLOS="1" Start="2013-07-01"
End="2013-07-31" CurrencyCode="USD" InvTypeCode="QUEEN">
    <BaseByGuestAmts>
      <BaseByGuestAmt NumberOfGuests="1" AgeQualifyingCode="10"
AmountBeforeTax="124.00"/>
      <BaseByGuestAmt NumberOfGuests="2" AgeQualifyingCode="10"
AmountBeforeTax="124.00"/>
    </BaseByGuestAmts>
    <AdditionalGuestAmounts>
      <AdditionalGuestAmount AgeQualifyingCode="10" Amount="20.00"/>
      <AdditionalGuestAmount AgeQualifyingCode="8" Amount="12.00"/>
    </AdditionalGuestAmounts>
  </Rate>
  <Rate RateTimeUnit="FullDuration" MinLOS="2" MaxLOS="2" Start="2013-07-01"
End="2013-07-31" CurrencyCode="USD" InvTypeCode="QUEEN">
    <BaseByGuestAmts>
      <BaseByGuestAmt NumberOfGuests="1" AgeQualifyingCode="10"
AmountBeforeTax="238.00"/>
      <BaseByGuestAmt NumberOfGuests="2" AgeQualifyingCode="10"
AmountBeforeTax="238.00"/>
    </BaseByGuestAmts>
    <AdditionalGuestAmounts>
      <AdditionalGuestAmount AgeQualifyingCode="10" Amount="40.00"/>
      <AdditionalGuestAmount AgeQualifyingCode="8" Amount="24.00"/>
    </AdditionalGuestAmounts>
  </Rate>
</Rates>
```



```

</Rate>
<Rate RateTimeUnit="FullDuration" MinLOS="3" MaxLOS="3" Start="2013-07-01"
End="2013-07-31" CurrencyCode="USD" InvTypeCode="QUEEN">
  <BaseByGuestAmts>
    <BaseByGuestAmt NumberOfGuests="1" AgeQualifyingCode="10"
AmountBeforeTax="342.00"/>
    <BaseByGuestAmt NumberOfGuests="2" AgeQualifyingCode="10"
AmountBeforeTax="342.00"/>
  </BaseByGuestAmts>
  <AdditionalGuestAmounts>
    <AdditionalGuestAmount AgeQualifyingCode="10" Amount="60.00"/>
    <AdditionalGuestAmount AgeQualifyingCode="8" Amount="36.00"/>
  </AdditionalGuestAmounts>
</Rate>
</Rates>

```

## 3.2 Get Rate Plans

### 3.2.1 Overview

The Get Rate Plans scenario provides the ability to search for active rate plans and offers. It can be used in place of the HotelRatePlanNotif message when a pull model is desired.

The HotelRatePlan Request message allows one system to query another for detailed rate plan information including availability, pricing and viewship. By supplying different criteria (e.g., specific rate code, dates), the request message can limit the number of rate plans and/or offers returned by the response.

### 3.2.2 Roles

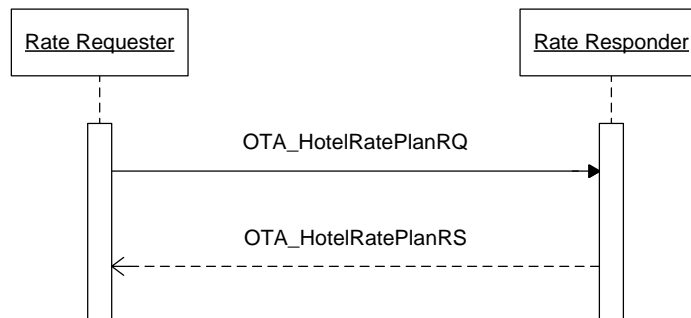
Role Name	Definition	Example
Rate Requester	A system that has the need to obtain rate information.	<ul style="list-style-type: none"> <li>Central Reservation System</li> <li>Property Management System</li> <li>Channel Management System</li> <li>Revenue Management System</li> <li>Online Travel Agent</li> </ul>
Rate Responder	A system that maintains rate information.	<ul style="list-style-type: none"> <li>Central Reservation System</li> <li>Property Management System</li> <li>Channel Management System</li> </ul>

### 3.2.3 Use Case

Assumption:	Rate Requester and Rate Responder have agreed which attributes will be transmitted and accepted.
Pre-condition:	None
Trigger:	The Rate Requester, through event or manual action, has determined that it must obtain rate information from the Rate Responder.

Basic Course of Events:	<ol style="list-style-type: none"> <li>1. Rate Requester constructs OTA_HotelRatePlanRQ with the appropriate query parameters.</li> <li>2. Rate Requester successfully transmits message payload.</li> <li>3. Rate Responder receives the message payload.</li> <li>4. Rate Responder processes OTA_HotelRatePlanRQ.</li> <li>5. Rate Responder returns the rate information appropriate to the query parameters, using OTA_HotelRatePlanRS.</li> </ol>
Post-condition:	Rate Requester may update their database to log what was last successfully processed.
Exception Path:	None
Alternative Path:	None

### 3.2.4 Message Flows



### 3.2.5 Get Rate Plan by Rate Plan Code

This message defines the process between publisher and subscriber when the definition of a known rate must be retrieved.

Specific to this message:

- RatePlanCode must be present

#### 3.2.5.1 Sample Request

```

<OTA_HotelRatePlanRQ EchoToken="2029063" PrimaryLangID="en-us" Target="Production"
TimeStamp="2013-02-13T10:32:31.000" Version="2.000"
xmlns="http://www.opentravel.org/OTA/2003/05">
  <POS>
    <Source>
      <RequestorID Type="5" ID="TRVAGT" />
    </Source>
  </POS>
  <RatePlans>
    <RatePlan>
      <HotelRef HotelCode="12345" />
      <RatePlanCandiates>
        <RatePlanCandiate RatePlanCode="LP2" />
      </RatePlanCandiates>
    </RatePlan>
  </RatePlans>
</OTA_HotelRatePlanRQ>
  
```

```
</RatePlan>
</RatePlans>
</OTA_HotelRatePlanRQ>
```

### 3.2.5.2 Sample Response

```
<OTA_HotelRatePlanRS EchoToken="2029063" Target="Production" Timestamp="2013-02-13T09:32:38" Version="2.000" xmlns="http://www.opentravel.org/OTA/2003/05">
  <RatePlans ChainCode="WW" HotelCode="12345">
    <RatePlan CurrencyCode="EUR" End="2013-02-13" InventoryAllocatedInd="true"
    IsCommissionable="true" MarketCode="105/305" RatePlanCategory="LP" RatePlanCode="LP2"
    RatePlanNotifType="New" Start="2013-02-13" YieldDeltaAmount="0.00"
    YieldableIndicator="false">
      <BookingRules>
        <BookingRule MaxAdvancedBookingOffset="POD" MinAdvancedBookingOffset="POD">
          <AcceptableGuarantees>
            <AcceptableGuarantee GuaranteeCode="IATACC"/>
          </AcceptableGuarantees>
          <CancelPenalties>
            <CancelPenalty PolicyCode="18H"/>
          </CancelPenalties>
          <LengthsOfStay>
            <LengthOfStay MinMaxMessageType="SetMinLOS" Time="1"/>
            <LengthOfStay MinMaxMessageType="SetMaxLOS" Time="1"/>
          </LengthsOfStay>
          <DOW_Restrictions>
            <AvailableDaysOfWeek Fri="true" Mon="true" Sat="true" Sun="true"
            Thur="true" Tue="true" Weds="true"/>
            <ArrivalDaysOfWeek Fri="true" Mon="true" Sat="true" Sun="true" Thur="true"
            Tue="true" Weds="true"/>
          </DOW_Restrictions>
        </BookingRule>
      </BookingRules>
      <Rates>
        <Rate Fri="true" InvTypeCode="C1S" Mon="true" RateTimeUnit="Day" Sat="true"
        Status="Open" Sun="true" Thur="true" Tue="true" Weds="true">
          <BaseByGuestAmts>
            <BaseByGuestAmt AgeQualifyingCode="10" AmountBeforeTax="124.95"
            NumberOfGuests="1"/>
          </BaseByGuestAmts>
          <AdditionalGuestAmounts>
            <AdditionalGuestAmount AgeQualifyingCode="8" Amount="20.00" MaxAge="14"/>
          </AdditionalGuestAmounts>
        </Rate>
      </Rates>
      <RatePlanLevelFee>
        <Fee Amount="19.00" ChargeUnit="21" MealPlanCode="4" Type="Exclusive"/>
        <Fee Code="19" Percent="7.00" Type="Inclusive"/>
      </RatePlanLevelFee>
      <Commission Percent="10.00"/>
      <Description Name="Short Description">
        <Text>DOUBLE MILES OFFER - 1.000 Miles per stay</Text>
      </Description>
      <Description Name="Long Description">
        <Text>Rate includes Service Charge, VAT, Culture-/Tourismtax. Buffet Breakfast
        excluded EUR 19 per person/day. Rate includes 1.000 miles per stay - show your
        Frequent Flyer Card.</Text>
      </Description>
    </RatePlan>
  </RatePlans>
</OTA_HotelRatePlanRS>
```

## 4 Messages

### 4.1 Update Rates

#### 4.1.1 Data Element Table – Update Rates Request

Element   @Attribute	Num	Description/Contents
OTA_HotelRatePlanNotifRQ	1	Root element of the message.
@EchoToken	0..1	A reference for additional message identification, assigned by the requesting host system. When a request message includes an echo token the corresponding response message MUST include an echo token with an identical value.
@Timestamp	1	Time of the transaction.
@Version	1	Version is a mandatory attribute in OTA; therefore, it must remain Mandatory in HTNG in order to be able to use the same message.
@MessageContentCode	1	The attribute refers to the MCC OpenTravel Alliance code list which includes Rate, Package.
OTA_HotelRatePlanNotifRQ / POS	0..1	POS provides a mechanism to indicate the source of the message.
OTA_HotelRatePlanNotifRQ / POS / Source	1	This holds the details about the requestor. It may be repeated to also accommodate the delivery systems.
OTA_HotelRatePlanNotifRQ / POS / Source / RequestorID	1	An identifier of the entity making the request (e.g. ATA/IATA/ID number, Electronic Reservation Service Provider (ERSP), Association of British Travel Agents.(ABTA)).
@ID	1	The ID used will be agreed by the trading partners and remain the same throughout the messages.
@Type	1	Type attribute uses the OpenTravel Alliance code list UIT and ID is used for the name or ID of the requestor. For example, type 22 – ERSP (Electronic reservation service provider) and ID: TrustCRS.
OTA_HotelRatePlanNotifRQ / RatePlans	1	Element grouping the rate plans to be transferred.
@HotelCode	1	This is the code of the property whose rates are being updated.
OTA_HotelRatePlanNotifRQ / RatePlans / RatePlan	1..n	Element defining rate plan being sent. Upper limit to be agreed upon by trading partners.

Element   @Attribute	Num	Description/Contents
@RatePlanCode	1	This is the rate plan which is being uploaded/downloaded.
@RatePlanCategory	0..1	This is the segment/category to which the rate being uploaded/downloaded belongs. Only one RatePlanCategory is acceptable for RatePlan code; therefore, the RatePlanCategory must be the same for all seasons passed.
@RatePlanStatusType	0..1	The status of the rate plan – Initial, Active, Deactivated.
@BaseRatePlanCode	0..1	The rate plan from which this rate plan is derived. Used for Character Strings, length 1 to 64.
@AdjustedAmount	0..1	The amount which should be added to the base rate plan to determine the price of this derived rate plan. Specifies an amount, max 3 decimals.
@AdjustedPercentage	0..1	The percentage off the base rate plan amount used to determine the price of this derived rate plan. Used for percentage values.
@AdjustUpIndicator	0..1	When true, the adjusted amount or adjusted percentage is added to the amount specified for the base rate plan to determine the derived rate amount. When false, the adjusted amount or adjusted percentage is subtracted from the amount specified for the base rate plan to determine the derived rate amount.
@ExtraNightRatePlanCode	0..1	Used to indicate what rate plan is used for shoulder night(s) booked in addition to the base nights. Used for Character Strings, length 1 to 64.
@YieldDeltaAmount	0..1	Numeric attribute indicating the amount to be added or subtracted to the rate to determine the real “yieldable” value of the rate.
@YieldableIndicator	0..1	Used to indicate the rate plan is subject to yield management logic. When true, the rate plan is yieldable. When false, the rate plan is not yieldable.
@MarketCode	0..1	String attribute to indicate the market code for the rate. Only one MarketCode is acceptable for RatePlan code; therefore, the MarketCode must be the same for all seasons passed.

Element   @Attribute	Num	Description/Contents
@RestrictedDisplayIndicator	0..1	This attribute is a boolean to indicate if the rate is to be considered "Confidential." Only one Confidential attribute is acceptable for each RatePlan code; therefore, the attribute must be the same for all seasons passed.
@RatePlanNotifType	1	This enumeration indicates whether the upload/download is meant to overwrite existing data or add to it. Possible enumerations are: New, Delta, Overlay, Remove.
@Start, @End	1 *	<p>In general, the Start and End attributes used at the RatePlan level should be used as follows: the Start attribute should be equal to the earliest Start attribute at the Rate level, and the End attribute should be equal to the latest End attribute at the Rate level.</p> <p>In other words, the Start and End attributes at the RatePlan level should specify the entire span of dates representing the Rate elements found in the Rates collection.</p> <p>This value is to be globally applied to any child element where the date spans are absent.</p>
@InventoryAllocatedInd	0..1	Boolean attribute to indicate whether the inventory allocated to this rate is taken out of the house inventory. Only one InvBlock indicator is acceptable for RatePlan code; therefore, the InvBlock indicator must be the same for all seasons passed.
@IsCommissionable	0..1	This indicates whether the rate season is commissionable or not. If the Boolean is set as False, the rate season is not commissionable. If the Boolean is set to "True," but NO commission is sent in the commission element, then the commission to be applied is the default one for the property. If the Boolean is set to True and a commission is passed in the field, then the commission sent is the one applied to the rate season.

Element   @Attribute	Num	Description/Contents
@CurrencyCode	1*	This is the currency associated to the rate that is being uploaded/downloaded – it could be different to the currency loaded for the property. This value is to be globally applied to any child representing a monetary amount where the CurrencyCode is absent.
OTA_HotelRatePlanNotifRQ / RatePlans / RatePlan / Description	2*	This element should be repeated twice: one instance for the short description and the other for the long description of the rate that is being uploaded/downloaded. This is not needed for deactivated or deleted rate plans. This is only applicable in delta if the description changed.
@Name	1	This element should be repeated twice: one instance for the short description and the other for the long description of the rate that is being uploaded/downloaded.  Its value must be 'Short Description' in one instance and 'Long Description' in the other.
OTA_HotelRatePlanNotifRQ / RatePlans / RatePlan / Description / Text	1	This element inside the Description element described above has the actual text corresponding to the Long Description and Short Description of the rate being uploaded/downloaded.
OTA_HotelRatePlanNotifRQ / RatePlans / RatePlan / UniqueID	0..1	The unique identifier element allows the trading partners to uniquely identify each RatePlanNotifRQ, (i.e., the entire message) for transaction tracability.
@Type	1	Refers to OpenTravel Alliance code list UIT – nr 16 = Reference. This is used to identify each single rate plan message for error reporting purposes.
@ID	1	ID is a unique incremental number for each rate plan message that identifies that specific message.
OTA_HotelRatePlanNotifRQ / RatePlans / RatePlan / Commission	0..1	Commission associated with the RatePlan. This can be a percentage or a flat amount.
@Percent	0..1	This is the amount of commission paid to an agency for booking the rate that is being uploaded/downloaded.

Element   @Attribute	Num	Description/Contents
OTA_HotelRatePlanNotifRQ / RatePlans / RatePlan / BookingRules	0..1	Optional. Used to transfer booking rules.
OTA_HotelRatePlanNotifRQ / RatePlans / RatePlan / BookingRules / BookingRule	1	Mandatory if BookingRules is transferred.
@MinAdvancedBookingOffset	0..1	This is the minimum amount of days prior to arrival that the rate can be booked.
@MaxAdvancedBookingOffset	0..1	This is the maximum amount of days prior to arrival that the rate can be booked.
OTA_HotelRatePlanNotifRQ / RatePlans / RatePlan / BookingRules / BookingRule / LengthsOfStay	0..1	A collection of lengths of stay.
OTA_HotelRatePlanNotifRQ / RatePlans / RatePlan / BookingRules / BookingRule / LengthsOfStay / LengthOfStay	1..n	A collection of patterns defining allowable lengths of stay (LOS).
@MinMaxMessageType =SetMinLOS, @Time @TimeUnit	0..1	This is the minimum length of stay requirement associated to the rate that is being uploaded/downloaded.
@MinMaxMessageType =SetMaxLOS, @Time @TimeUnit	0..1	This is the maximum length of stay requirement associated to the rate that is being uploaded/downloaded.
OTA_HotelRatePlanNotifRQ / RatePlans / RatePlan / BookingRules / BookingRule / DOW_Restrictions / AvailableDaysOfWeek	0..1	Element to transfer DOW when stay is possible.
@Mon,@Tue,@Weds,@Thur, @Fri,@Sat,@Sun	0..1 per day	The day of the week indicators selected are those in which the rate plan is available and therefore could be used to reflect when STAY is possible. Days marked as 0 (boolean) would mean on those days the rate is not available and therefore stay would not be possible.  If one DOW indicator is used they must all be used.



Element   @Attribute	Num	Description/Contents
OTA_HotelRatePlanNotifRQ / RatePlans / RatePlan / BookingRules / BookingRule / DOW_Restrictions / ArrivalDaysOfWeek	0..1	Element to transfer DOW when arrival is possible.
@Mon,@Tue,@Weds,@Thur, @Fri,@Sat,@Sun	0..1 per day	The day of the week indicators set to 1 are those in which Arrival is allowed. Those set to 0 are the days in which arrival is not allowed.
OTA_HotelRatePlanNotifRQ / RatePlans / RatePlan / BookingRules / InventoryInfo	0..1	Allows specification of a room type to be used in conjunction with the rate plan being communicated. This will allow communication of booking rules by product.
@InvTypeCode	1	Specific system inventory type code. If the inventory item is a room, typical values could be room type code, e.g.: A1K, A1Q, etc. Values may use the OpenTravel Code list or a code specific to the property or hotel brand.
OTA_HotelRatePlanNotifRQ / RatePlans / RatePlan / BookingRules / BookingRule / Viewerships	0..n	A collection of Viewerships.
OTA_HotelRatePlanNotifRQ / RatePlans / RatePlan / BookingRules / BookingRule / Viewerships / Viewership /	1	Path to BookingChannelCodes.
OTA_HotelRatePlanNotifRQ / RatePlans / RatePlan / BookingRules / BookingRule / Viewerships / Viewership / BookingChannelsCodes /	0..1	A collection of strings that identify booking channels, such as GDSs or Internet sites, etc. associated with this viewership record.
OTA_HotelRatePlanNotifRQ / RatePlans / RatePlan / BookingRules / BookingRule / Viewerships / Viewership / BookingChannelsCodes / BookingChannelCode	0..n	This would be used to indicate which Channels are allowed to view and book the rate. Could be substituted with SystemCode.

Element   @Attribute	Num	Description/Contents
@Sort	0..1	The attribute “sort” can be associated to each code. Must be a string where we can pass C for closed as well as a selling order.
OTA_HotelRatePlanNotifRQ / RatePlans / RatePlan / BookingRules / BookingRule / CancelPenalties /	0..1	Used to transfer the Cancellation penalty for the rate plan transferred.
OTA_HotelRatePlanNotifRQ / RatePlans / RatePlan / BookingRules / BookingRule / CancelPenalties / CancelPenalty	0..1	Defines the cancellation penalty of the hotel facility.
OTA_HotelRatePlanNotifRQ / RatePlans / RatePlan / BookingRules / BookingRule / CancelPenalties / CancelPenalty / Deadline	0..1	Cancellation deadline, absolute or relative.
@AbsoluteDeadline	0..1	This is used to indicate the “exact date” or “exact date and time” by which a reservation made for the rate passed needs to be cancelled in order to avoid penalties.
OTA_HotelRatePlanNotifRQ / RatePlans / RatePlan / BookingRules / BookingRule / CancelPenalties / CancelPenalty / Deadline		This is used to indicate the “number of days or hours,” “before arrival” or “after booking” by which a reservation made for the rate passed needs to be cancelled in order to avoid penalties.
@OffsetDropTime	0..1	An enumeration to indicate BeforeArrival or AfterBooking.
@OffsetUnitMultiplier	0..1	A numeric to indicate the number of hours or days by which to cancel.
@OffsetTimeUnit	0..1	An enumeration to indicate whether we are talking about hours or days. Possible enumerations for OpenTravel Alliance are various BUT RECOMMENDED ENUMERATIONS to be used by HTNG should only be: Hour and Day.

Element   @Attribute	Num	Description/Contents
OTA_HotelRatePlanNotifRQ / RatePlans / RatePlan / BookingRules / BookingRule / CancelPenalties / CancelPenalty / AmountPercent	1 *	Conditionally Mandatory. If a Deadline is passed, then an AmountPercent must also be indicated using the appropriate attribute.
@NnbrOfNights OR @Amount OR @Percent	1 *	Conditionally Mandatory.
OTA_HotelRatePlanNotifRQ / RatePlans / RatePlan / BookingRules / BookingRule / AcceptableGuarantees /	0..1	This is used to transfer Guarantee AND/OR Deposit policies for the rate.
OTA_HotelRatePlanNotifRQ / RatePlans / RatePlan / BookingRules / BookingRule / AcceptableGuarantees / AcceptableGuarantee	1..n	This is used to indicate the specific Guarantee AND/OR Deposit policy for the rate.
@GuaranteePolicyType	0..1	To pass a Guarantee policy, the GuaranteeType attribute will be set to GuaranteeRequired. To pass a deposit it will be set to DepositRequired.
OTA_HotelRatePlanNotifRQ / RatePlans / RatePlan / BookingRules / BookingRule / AcceptableGuarantees / AcceptableGuarantee / GuaranteesAccepted	1 *	Conditionally Mandatory – if GuaranteeType is passed.
OTA_HotelRatePlanNotifRQ / RatePlans / RatePlan / BookingRules / BookingRule / AcceptableGuarantees / AcceptableGuarantee / GuaranteesAccepted / GuaranteeAccepted	1	Mandatory.

Element   @Attribute	Num	Description/Contents
OTA_HotelRatePlanNotifRQ / RatePlans / RatePlan / BookingRules / BookingRule / AcceptableGuarantees / AcceptableGuarantee / GuaranteesAccepted / GuaranteeAccepted / PaymentCard	1	Mandatory.
@GuaranteeCode	1	The Code associated to the guarantee or deposit. Set to Card Type OpenTravel Alliance code CDT nr 1 – Credit.
@CardType	1	Used to indicate that the deposit or guarantee must be provided by credit card. Set to Card Type OpenTravel Alliance code CDT nr 1 – Credit.
OTA_HotelRatePlanNotifRQ / RatePlans / RatePlan / BookingRules / BookingRule / AcceptableGuarantees / AcceptableGuarantee / GuaranteeDescription / Text	0..1	Formatted text of the guarantee description.
@GuaranteeCode	0..1	Goes with the GuaranteeCode attribute and describes the Guarantee or Deposit requirement. For instance: GuaranteeCode = GCD, GuranteeDescription/Text = Guarantee by Corporate ID GuaranteeCode = DDP, GuranteeDescription/Text = Deposit by Check,Transfer
OTA_HotelRatePlanNotifRQ / RatePlans / RatePlan / Rates	0..1	Includes all rates loaded for the rate plan.
OTA_HotelRatePlanNotifRQ / RatePlans / RatePlan / Rates / Rate	1..n	Upper limit may be agreed upon partners.

Element   @Attribute	Num	Description/Contents
@Start, @End	0..1	This set of Start and End attributes represents the start and end of each season which is being transferred with the rate. HOWEVER, if the Start and End attribute at rate plan level are used to indicate each season, the Start and End attribute at rate level WOULD ONLY BE USED in case of DOW variations – if no DOW variation is needed the Start and End attribute at Rate level could be omitted. If using LOS-based rates, these attributes define a range of arrival dates.
@CurrencyCode	1 *	This is the currency associated to the rate that is being uploaded/downloaded – it could be different from the currency loaded for the property.
@Mon,@Tue,@Weds,@Thur, @Fri,@Sat,@Sun	0..1 per day	These DOW indicators are used to specify to which days the rate passed is applicable. If one is sent, they must all be sent and rates must be sent for each exception. If there is an exception to the pricing, DOW indicators must be passed and the Rate element is then repeated for the exception days. Exceptions to the pricing are only allowed if no stay or arrival restrictions have been applied.
@InvTypeCode	1	This is the room type for which the rates are transferred.  For each room type a new instance of the Rate element must be passed. If the room type is transmitted with rate values attached it will be considered opened at the price indicated. If the room type is passed with a 0 value it will be considered closed for that rate plan (i.e., not applicable for the rate plan). If in a modification message a room type that was previously loaded is not sent, then it remains unchanged.
@Status	0..1	This is used to indicate for each room code passed for the rate whether it is opened or closed. Default value to be agreed upon by partners.

Element   @Attribute	Num	Description/Contents
@RateTimeUnit	0..1	Rate Time unit is an Enumeration of time units upon which the RateAmount is based (e.g., daily, weekly, single rate for full stay). The default value is "Day". If using LOS pricing, this attribute MUST be equal to "FullDuration".
@UnitMultiplier	0..1	The number of RateTimeUnits that the rate Amount is based upon (e.g., rate for one day in case of nightly rates). If NOT sent the default assumed is always 1 day (i.e., the rate is based on a nightly rate).
@MinLOS, @MaxLOS	0..1	If using LOS pricing, these two values should be the same and define the stay length.
OTA_HotelRatePlanNotifRQ / RatePlans / RatePlan / Rates / Rate / BaseByGuestAmnts / BaseByGuestAmt	1..n*	At least one instance for NumberOfGuest=1 is mandatory for the RatePlanNotifType = New or Overlay. For the RatePlanNotifType of Delta or Remove it is optional.
@AgeQualifyingCode	0..1	@AgeQualifyingCode – 8 = child, 10 = adult.
@NumberOfGuests	1	The NumberOfGuest Attribute indicates what type of rate is being passed – if NumberOfGuests is = 1 then we are transmitting a single rate, if higher than 1 then it is a double or full occupancy rate.
@AgeBucket	0..1	This value may be included to identify the age bucket to which the rate amount corresponds.
@AmountBeforeTax or @AmountAfterTax	1	Either @AmountBeforeTax or AmountAfterTax is Mandatory for each @NumberOfGuests. Partners must select whether to send either the @AmountBeforeTax or @AmountAfterTax (or both) attributes.
OTA_HotelRatePlanNotifRQ / RatePlans / RatePlan / Rates / Rate / AdditionalGuestAmounts / AdditionalGuestAmount	0..n	Used to transfer extra adult and extra child information.
@AgeQualifyingCode	0..1	@AgeQualifyingCode – 8 = child, 10 = adult.
@AgeBucket	0..1	This value may be included to identify the age bucket to which the rate amount corresponds.

Element   @Attribute	Num	Description/Contents
@Percent OR @Amount	0..1	This is the percentage of the single rate that represents the child rate. Could also be expressed as fixed amount.
OTA_HotelRatePlanNotifRQ / RatePlans / RatePlan / RatePlanLevelFee	0..1	Linked to Total Pricing – used to pass all Tax and fees info.
OTA_HotelRatePlanNotifRQ / RatePlans / RatePlan / RatePlanLevelFee / Fee	1..n	Repeatable once per fee.
@Type	0..1 per Fee	An enumeration to indicate whether the fee is inclusive, exclusive or cumulative.
@Code	0..1 per Fee	<p>The Code attribute refers to the OpenTravel Alliance FeeTaxType code list and is used to indicate what fee is being transferred. Code used will be:</p> <ul style="list-style-type: none"> <li>17– Total tax</li> <li>16 – Surcharge</li> <li>14 – Service charge</li> <li>27 – Miscellaneous</li> <li>19 – VAT/GST tax</li> <li>8 – Lodging tax</li> <li>15 – State tax</li> <li>3 – City tax</li> <li>10 – Occupancy tax</li> <li>34 – Local fee</li> </ul> <p>A request has been made to OpenTravel Alliance for the MPT list to be accessible from the same attribute so that meal plan info can also be passed in the same field.</p>
@Amount OR @Percent	1 per Fee	Either @Amount or @Percent is Mandatory.
@Charge Unit	0..1	<p>Charge Unit is used to indicate the unit of measure of the fee/tax passed: based on the OTACharge Type code list, some examples are:</p> <ul style="list-style-type: none"> <li>18 – Per room per stay</li> <li>19 – Per room per night</li> <li>20 – Per person per stay</li> <li>21 – Per person per night</li> </ul>

Element   @Attribute	Num	Description/Contents
@CurrencyCode	1*	This is the currency associated to the rate that is being uploaded/downloaded – it could be different from the currency loaded for the property.
@MandatoryIndicator	0..1	MandatoryIndicator is a boolean Attribute. This will indicate if the fee or meal plan passed is Mandatory or not and will help in the determination of the calculation for total pricing.
OTA_HotelRatePlanNotifRQ / RatePlans / RatePlan / RatePlanLevelFee / Fee / Description	0..1	Linked to Total Pricing – used to pass all tax and fees info.  For fees and taxes that are not OpenTravel Alliance coded, Description/Text will be used to indicate the fee that is being passed. Only one description allowed for each fee element.
OTA_HotelRatePlanNotifRQ / RatePlans / RatePlan / RatePlanLevelFee / Fee / Description / Text	1	Description of the fee.

#### 4.1.2 Data Element Table – Update Rates Response

Element   @Attribute	Num	Description/Contents
OTA_HotelRatePlanNotifRS	1	Root element of the message.
@EchoToken	0..1	A reference for additional message identification, assigned by the requesting host system. When a request message includes an echo token the corresponding response message MUST include an echo token with an identical value.
@Version	1	Version is a mandatory attribute in OTA; therefore, it must remain Mandatory in HTNG in order to be able to use the same message.
@Timestamp	1	Time of the transaction.
OTA_HotelRatePlanNotifRS / Errors	1	Indicates an error occurred during the processing of an OpenTravel message. If the message successfully processes, but there are business errors, those errors should be passed in the warning element.
OTA_HotelRatePlanNotifRS / Errors / Error	1..99	An error that occurred during the processing of a message.



Element   @Attribute	Num	Description/Contents
@Type	1	Mandatory in OTA. Refers to OpenTravel Alliance EWT list (error warning type).
@Code	0..1	Refers to OpenTravel Alliance list ERR. Should be used wherever possible.
@RecordID	0..1	If the receiving system is able to identify within a batch of availability status messages which specific message failed, the UniqueID of the message should be reported here.
OTA_HotelRatePlanNotifRS / Success	1	This is the annotation that the rate plan message batch was received successfully. It could be combined with warning messages if some of the messages in the batch had issues.
OTA_HotelRatePlanNotifRS / Warnings	1	Used when a message has been successfully processed to report any warnings or business errors that occurred.
OTA_HotelRatePlanNotifRS / Warnings / Warning	1..99	Used in conjunction with the Success element to define a business error.
@Type	1	Mandatory in OTA. Refers to OpenTravel Alliance EWT list (error warning type).
@Code	0..1	Refers to OpenTravel Alliance list ERR. Should be used wherever possible.
@RecordID	0..1	If the receiving system is able to identify within a batch of availability status messages which specific message failed, the UniqueID of the message should be reported here.

## 4.2 Hotel Rate Plan

### 4.2.1 Data Element Table – Hotel Rate Plan Request

Element   @Attribute	Num	Description/Contents
OTA_HotelRatePlanRQ	1	Root element of the message.

Element   @Attribute	Num	Description/Contents
@EchoToken	0..1	A reference for additional message identification, assigned by the requesting host system. When a request message includes an echo token the corresponding response message MUST include an echo token with an identical value.
@Timestamp	1	Time of the transaction.
@Version	1	Version is a mandatory attribute in OpenTravel Alliance – therefore it must remain mandatory in HTNG in order to be able to use the same message.
OTA_HotelRatePlanRQ / POS	0..1	POS provides a mechanism to indicate the source of the message.
OTA_HotelRatePlanRQ / POS / Source	1	This holds the details about the requestor. It may be repeated to also accommodate the delivery systems.
OTA_HotelRatePlanRQ / POS / Source / RequestorID	1	The system sending the request message. An identifier of the entity making the request (e.g.; ATA/IATA/ID number, Electronic Reservation Service Provider (ERSP), Association of British Travel Agents (ABTA)).
@Type	1	Type attribute uses the OpenTravel Alliance code list UIT. For example, type 22 – ERSP (Electronic reservation service provider).
@ID	1	ID is used for the name or ID of the requestor. For example, Passkey.
OTA_HotelRatePlanRQ / RatePlans	1	Element grouping the rate plans to be transferred.
OTA_HotelRatePlanRQ / RatePlans / RatePlan	1..n	Element defining rate plan being sent. Upper limit to be agreed upon by trading partners.
OTA_HotelRatePlanRQ / RatePlans / RatePlan / DateRange	0..1	Element defining date range criteria requested.
@Start, @End	1	This is to request rate data limited to a particular date range.
OTA_HotelRatePlanRQ / RatePlans / RatePlan / RatePlanCandidates / RatePlanCandidate	0..1	Element used to identify available products and rates.
@RatePlanCode	0..1	This is the rate plan which is being uploaded/downloaded.

Element   @Attribute	Num	Description/Contents
@RatePlanCategory	0..1	This is the segment/category to which the rate being uploaded/downloaded belongs. If specific rate information is required, either @RatePlanCode or @RatePlanCategory should be passed.
OTA_HotelRatePlanRQ / RatePlans / RatePlan / RatePlanCandidates / RatePlanCandidate / HotelRefs	1	A collection of hotel identifiers to which the rate plan applies.
OTA_HotelRatePlanRQ / RatePlans / RatePlan / RatePlanCandidates / RatePlanCandidate / HotelRefs / HotelRef	1	Information to identify one or more hotels.
@HotelCode	1	This is the code of the property whose rate information is being requested.

#### 4.2.2 Data Element Table – Hotel Rate Plan Response

Element   @Attribute	Num	Description/Contents
OTA_HotelRatePlanRS	1	Root element of the message.
@EchoToken	0..1	A reference for additional message identification, assigned by the requesting host system. When a request message includes an echo token the corresponding response message MUST include an echo token with an identical value.
@Timestamp	1	Time of the transaction.
@Version	1	Version is a mandatory attribute in OTA; therefore, it must remain Mandatory in HTNG in order to be able to use the same message.
OTA_HotelRatePlanRS / Success	1	This is the annotation that the availability status message batch was received successfully. It could be combined with warning messages if some of the messages in the batch had issues.
OTA_HotelRatePlanRS / Warnings	0..1	Used when a message has been successfully processed to report any warnings or business errors that occurred.

Element   @Attribute	Num	Description/Contents
OTA_HotelRatePlanRS / Warnings / Warning	1..99	Used in conjunction with the Success element to define a business error.
@Type	1	Refers to OpenTravel Alliance EWT list (error warning type).
@Code	0..1	Optional. Refers to OpenTravel Alliance list ERR. Should be used wherever possible.
@RecordID	0..1	If the receiving system is able to identify within a batch of availability status messages which specific message failed, the UniqueID of the message should be reported here.
OTA_HotelRatePlanRS / Errors	0..1	Indicates an error occurred during the processing of an OpenTravel message. If the message successfully processes, but there are business errors, those errors should be passed in the warning element.
OTA_HotelRatePlanRS / Errors / Error	1..99	An error that occurred during the processing of a message.
@Type	1	Mandatory in OTA. Refers to OpenTravel Alliance EWT list (error warning type).
@Code	0..1	Optional. Refers to OpenTravel Alliance list ERR. Should be used wherever possible.
@RecordID	0..1	If the receiving system is able to identify within a batch of availability status messages which specific message failed, the UniqueID of the message should be reported here.
OTA_HotelRatePlanRS / RatePlans	1	Element grouping the rate plans to be transferred.
@HotelCode	1	This is the code of the property whose availability is being updated.
OTA_HotelRatePlanRS / RatePlans / RatePlan	1..n	Element defining rate plan being sent. Upper limit to be agreed upon by trading partners.
@RatePlanCode	1	This is the rate plan which is being uploaded/downloaded.

Element   @Attribute	Num	Description/Contents
@RatePlanCategory	0..1	This is the segment/category to which the rate being uploaded/downloaded belongs. Only one RatePlanCategory is acceptable for RatePlan code; therefore, the RatePlanCategory must be the same for all seasons passed.
@RatePlanStatusType	0..1	The status of the rate plan – Initial, Active, Deactivated.
@BaseRatePlanCode	0..1	The rate plan from which this rate plan is derived. Used for Character Strings, length 1 to 64.
@AdjustedAmount	0..1	The amount which should be added to the base rate plan to determine the price of this derived rate plan. Specifies an amount, max 3 decimals.
@AdjustedPercentage	0..1	The percentage off the base rate plan amount used to determine the price of this derived rate plan. Used for percentage values.
@AdjustUpIndicator	0..1	When true, the adjusted amount or adjusted percentage is added to the amount specified for the base rate plan to determine the derived rate amount. When false, the adjusted amount or adjusted percentage is subtracted from the amount specified for the base rate plan to determine the derived rate amount.
@ExtraNightRatePlanCode	0..1	Used to indicate what rate plan is used for shoulder night(s) booked in addition to the base nights.Used for Character Strings, length 1 to 64.
@RatePlanCode	1	This is the rate plan which is being uploaded/downloaded.
@RatePlanCategory	0..1	This is the segment/category to which the rate being uploaded/downloaded belongs. Only one RatePlanCategory is acceptable for RatePlan code; therefore, the RatePlanCategory must be the same for all seasons passed.
@YieldableIndicator	0..1	Boolean attribute to indicate whether the rate is yieldable or not. Only one Yieldable indicator is acceptable for RatePlan code; therefore, the Yieldable indicator must be the same for all seasons passed.
@YieldDeltaAmount	0..1	Numeric attribute indicating the amount to be added to or subtracted from the rate to determine the real “yieldable” value of the rate.

Element   @Attribute	Num	Description/Contents
@MarketCode	0..1	String attribute to indicate the market code for the rate. Only one MarketCode is acceptable for RatePlan code; therefore, the MarketCode must be the same for all seasons passed.
@RestrictedDisplayIndicator	0..1	This attribute is a boolean to indicate if the rate is to be considered "Confidential." Only one Confidential attribute is acceptable for each RatePlan code; therefore, the attribute must be the same for all seasons passed.
@RatePlanNotifType	1	This enumeration indicates whether the upload/download is meant to overwrite existing data or add to it. Possible enumerations are: New, Delta, Overlay, Remove.
@Start, @End	1	<p>In general, the Start and End attributes used at the RatePlan level should be used as follows: the Start attribute should be equal to the earliest Start attribute at the Rate level, and the End attribute should be equal to the latest End attribute at the Rate level.</p> <p>In other words, the Start and End attributes at the RatePlan level should specify the entire span of dates representing the Rate elements found in the Rates collection.</p> <p>HOWEVER, the same Start and End attribute or Rate Plan level could be used to indicate the actual seasons of the rate if the two systems integrating using this message intend to transfer some of the elements at rate plan level as season-based elements. For instance, if the two systems are both capable of treating the "Commissionable" indicator as a seasonal item rather than an item that applies to the entire rate.</p> <p>If the Start and End attributes at rate plan level are used to indicate each season, the Start and End attributes at rate level WOULD ONLY BE USED in case of DOW variations – if no DOW variation is needed the Start and End attributes at Rate level could be omitted.</p>

Element   @Attribute	Num	Description/Contents
@InventoryAllocatedInd	0..1	Boolean attribute to indicate whether the inventory allocated to this rate is taken out of the house inventory. Only one InvBlock indicator is acceptable for RatePlan code; therefore, the InvBlock indicator must be the same for all seasons passed.
@IsCommissionable	0..1	This indicates whether the rate season is commissionable or not. If the Boolean is sent as False, the rate season is not commissionable. If the Boolean is set to True, but NO commission is sent in the commission element, then the commission to be applied is the default one for the property. If the Boolean is set to True and a commission is passed in the field then the commission sent is the one applied to the rate season.
OTA_HotelRatePlanRS / RatePlans / RatePlan / Description	2	This element should be repeated twice: one instance for the short description and the other for the long description of the rate that is being uploaded/downloaded.
@Name	1	This element should be repeated twice: one instance for the short description and the other for the long description of the rate that is being uploaded/downloaded.  Its value must be 'Short Description' in one instance and 'Long Description' in the other.
OTA_HotelRatePlanRS / RatePlans / RatePlan / Description / Text	1	This element inside the Description element described above has the actual text corresponding to the long and short description of the rate being uploaded/downloaded.
OTA_HotelRatePlanRS / RatePlans / RatePlan / UniqueID	0..1	The unique identifier element that allows the trading partners to uniquely identify each Rate being uploaded, for transaction tracability.
@Type	1	Refers to OpenTravel Alliance code list UIT - nr 16 = Reference. This is used to identify each single rate plan message for error reporting purposes.
@ID	1	ID is a unique incremental number for each rate plan message that identifies that specific message.

Element   @Attribute	Num	Description/Contents
OTA_HotelRatePlanRS / RatePlans / RatePlan / Commission	0..1	Commission associated with the RatePlan. This can be a percentage or a flat amount.
@Percent	0..1	This is the amount of commission paid to an agency for booking the rate that is being uploaded/downloaded.
OTA_HotelRatePlanRS / RatePlans / RatePlan / BookingRules	0..1	Optional. Used to transfer booking rules.
OTA_HotelRatePlanRS / RatePlans / RatePlan / BookingRules / BookingRule	1	Mandatory if BookingRules is transferred.
@MinAdvancedBookingOffset	0..1	This is the minimum amount of days prior to arrival that the rate can be booked.
@MaxAdvancedBookingOffset	0..1	This is the maximum amount of days prior to arrival that the rate can be booked.
OTA_HotelRatePlanRS / RatePlans / RatePlan / BookingRules / BookingRule / LengthsOfStay	0..1	SetMinLOS & SetMaxLOS Mandatory.
OTA_HotelRatePlanRS / RatePlans / RatePlan / BookingRules / BookingRule / LengthsOfStay / LengthOfStay	1..n	SetMinLOS & SetMaxLOS Mandatory.
@MinMaxMessageType =SetMinLOS, @Time @TimeUnit	0..1	This is the minimum length of stay requirement associated to the rate that is being uploaded/downloaded.
@MinMaxMessageType =SetMaxLOS, @Time @TimeUnit	0..1	This is the maximum length of stay requirement associated to the rate that is being uploaded/downloaded.
OTA_HotelRatePlanRS / RatePlans / RatePlan / BookingRules / BookingRule / DOW_Restrictions / AvailableDaysOfWeek	0..1	Element to transfer DOW when stay is possible.



Element   @Attribute	Num	Description/Contents
@Mon,@Tue,@Weds,@Thur, @Fri,@Sat,@Sun	0..1 per day	The day of the week indicators selected are those in which the rate plan is available and therefore could be used to reflect when STAY is possible. Days marked as 0 (boolean) would mean on those days the rate is not available and therefore stay would not be possible. If one DOW indicator is used they must all be used.
OTA_HotelRatePlanRS / RatePlans / RatePlan / BookingRules / BookingRule / DOW_Restrictions / ArrivalDaysOfWeek	0..1	Element to transfer DOW when arrival is possible.
@Mon,@Tue,@Weds,@Thur, @Fri,@Sat,@Sun	0..1 per day	The day of the week indicators set to 1 are those in which Arrival is allowed. Those set to 0 are the days in which arrival is not allowed.
OTA_HotelRatePlanRS / RatePlans / RatePlan / BookingRules / InventoryInfo	0..1	Optional element to indicate Inventory information, when necessary to qualify the booking rule.
@InvTypeCode	1	Specific system inventory type code. If the inventory item is a room, typical values could be room type code, e.g.: A1K, A1Q, etc. Values may use the OpenTravel Code list or a code specific to the property or hotel brand.
OTA_HotelRatePlanRS / RatePlans / RatePlan / BookingRules / BookingRule / Viewerships	0..n	A collection of Viewerships.
OTA_HotelRatePlanRS / RatePlans / RatePlan / BookingRules / BookingRule / Viewerships / Viewership /	1	Path to BookingChannelCodes.
OTA_HotelRatePlanRS / RatePlans / RatePlan / BookingRules / BookingRule / Viewerships / Viewership / BookingChannelsCodes /	0..1	A collections of strings that identify booking channels, such as GDSs or Internet sites, etc. associated with this viewership record.

Element   @Attribute	Num	Description/Contents
OTA_HotelRatePlanRS / RatePlans / RatePlan / BookingRules / BookingRule / Viewerships / Viewership / BookingChannelsCodes / BookingChannelCode	0..n	This would be used to indicate which Channels are allowed to view and book the rate. Could be substituted with SystemCode.
@Sort	0..1	The attribute "sort" can be associated to each code. Must be a string where we can pass C for closed as well as a selling order.
OTA_HotelRatePlanRS / RatePlans / RatePlan / Rates	0..1	Includes all rates loaded for the rate plan.
OTA_HotelRatePlanRS / RatePlans / RatePlan / Rates / Rate	1..n	Upper limit may be agreed upon by trading partners.
@Start, @End	1 *	This set of Start and End attributes represents the start and end of a date span for a variance in rate amount during the period specified at the RatePlan level, if it exists. If using LOS-based rates, these attributes define a range of arrival dates.
@CurrencyCode	1	This is the currency associated to the rate that is being uploaded/downloaded – it could be different from the currency loaded for the property.
@Mon,@Tue,@Weds,@Thur, @Fri,@Sat,@Sun	0..1 per day	These DOW indicators are used to specify to which days the rate passed is applicable. If one is sent, they must all be sent and rates must be sent for each exception. If there is an exception to the pricing, DOW indicators must be passed and the Rate element is then repeated for the exception days. Exceptions to the pricing are only allowed if no stay or arrival restrictions have been applied.

Element   @Attribute	Num	Description/Contents
@InvTypeCode	1	<p>This is the room type for which the rates are transferred.</p> <p>For each room type a new instance of the Rate element must be passed. If the room type is transmitted with rate values attached it will be considered opened at the price indicated. If the room type is passed with a 0 value it will be considered closed for that rate plan (i.e., not applicable for the rate plan). If in a modification message a room type that was previously loaded is not sent, then it remains unchanged.</p>
@Status	0..1	This is used to indicate for each room code passed for the rate whether it is opened or closed. Default value to be agreed upon by trading partners.
@RateTimeUnit	0..1	Rate Time unit is an Enumeration of time units upon which the RateAmount is based (e.g., daily, weekly, single rate for full stay). The default value is "Day". If using LOS pricing, this attribute MUST be equal to "FullDuration".
@UnitMultiplier	0..1	The number of RateTimeUnits that the rate Amount is based upon (e.g., rate for one day in case of nightly rates). If NOT sent the default assumed is always 1 day (i.e., the rate is based on a nightly rate).
@MinLOS, @MaxLOS	0..1	If using LOS pricing, these two values should be the same and define the stay length.
OTA_HotelRatePlanRS / RatePlans / RatePlan / Rates / Rate / BaseByGuestAmnts / BaseByGuestAmt	1..n	At least one instance for NumberOfGuest=1 is mandatory for the RatePlanNotifType New or Overlay. For the RatePlanNotifType of Delta or Remove it is optional.
@NumberOfGuests	1	The NumberOfGuest Attribute indicates what type of rate is being passed – if NumberOfGuests is = 1 then we are transmitting a single rate, if higher than 1 then it is a double or full occupancy rate.

Element   @Attribute	Num	Description/Contents
@AmountBeforeTax or @AmountAfterTax	1	Either @AmountBeforeTax or AmountAfterTax is Mandatory for each @NumberOfGuests.  Partners must select whether to send either the @AmountBeforeTax or @AmountAfterTax (or both) attributes.
OTA_HotelRatePlanRS / RatePlans / RatePlan / Rates / Rate / AdditionalGuestAmounts / AdditionalGuestAmount	0..n	Used to transfer extra adult and extra child information.
@AgeQualifyingCode	0..1	@AgeQualifyingCode – 8 = child, 10 = adult.
@Percent OR @Amount	0..1	This is the percentage of the single rate that represents the child rate. Could also be expressed as fixed amount.
OTA_HotelRatePlanRS / RatePlans / RatePlan / RatePlanLevelFee	0..1	Linked to Total Pricing – used to pass all Tax and fees info.
OTA_HotelRatePlanRS / RatePlans / RatePlan / RatePlanLevelFee / Fee	1..n	Repeatable once per fee.
@Type	0..1 per Fee	An enumeration to indicate whether the fee is inclusive, exclusive or cumulative.

Element   @Attribute	Num	Description/Contents
@Code	0..1 per Fee	<p>The Code attribute refers to the OpenTravel Alliance FeeTaxType code list and is used to indicate what fee is being transferred. Code used will be:</p> <ul style="list-style-type: none"> <li>17- Total tax</li> <li>16 - Surcharge</li> <li>14 - Service charge</li> <li>27 - Miscellaneous</li> <li>19 - VAT/GST tax</li> <li>8 - Lodging tax</li> <li>15 - State tax</li> <li>3 - City tax</li> <li>10 - Occupancy tax</li> <li>34 - Local fee</li> </ul> <p>A request has been made to OpenTravel Alliance for the MPT list to be accessible from the same attribute so that meal plan info can also be passed in the same field.</p>
@Amount OR @Percent	1 per Fee	Either @Amount or @Percent is Mandatory.
@Charge Unit	0..1	<p>Charge Unit is used to indicate the unit of measure of the fee/tax passed: based on the OTACharge Type code list, some examples are:</p> <ul style="list-style-type: none"> <li>18 - Per room per stay</li> <li>19 - Per room per night</li> <li>20 - Per person per stay</li> <li>21 - Per person per night</li> </ul>
@CurrencyCode	0..1	This is the currency associated to the rate that is being uploaded/downloaded – it could be different from the currency loaded for the property.
@MandatoryIndicator	0..1	MandatoryIndicator is a boolean Attribute. This will indicate if the fee or meal plan passed is Mandatory or not and will help in the determination of the calculation for total pricing.

Element   @Attribute	Num	Description/Contents
OTA_HotelRatePlanRS / RatePlans / RatePlan / RatePlanLevelFee / Fee / Description	0..1	Linked to Total Pricing – used to pass all tax and fees info.  For fees and tax that are not OpenTravel Alliance coded, Description/Text will be used to indicate the fee that is being passed. Only one description allowed for each fee element.
OTA_HotelRatePlanRS / RatePlans / RatePlan / RatePlanLevelFee / Fee / Description / Text	1	Description of the fee.
OTA_HotelRatePlanRS / RatePlans / RatePlan / BookingRules / BookingRule / CancelPenalties /	0..1	Used to transfer the Cancellation penalty for the rate plan transferred.
OTA_HotelRatePlanRS / RatePlans / RatePlan / BookingRules / BookingRule / CancelPenalties / CancelPenalty	0..1	Defines the cancellation penalty of the hotel facility.
OTA_HotelRatePlanRS / RatePlans / RatePlan / BookingRules / BookingRule / CancelPenalties / CancelPenalty / Deadline	0..1	Cancellation deadline, absolute or relative. The 3 Offset attributes are used to indicate the “number of days or hours,” “before arrival” or “after booking” by which a reservation made for the rate passed needs to be cancelled in order to avoid penalties.
@AbsoluteDeadline	0..1	This is used to indicate the “exact date” or “exact date and time” by which a reservation made for the rate passed needs to be cancelled in order to avoid penalties.
@OffsetDropTime	0..1	An enumeration to indicate BeforeArrival or AfterBooking.
@OffsetUnitMultiplier	0..1	A numeric to indicate the number of hours or days by which to cancel.
@OffsetTimeUnit	0..1	An enumeration to indicate whether we are talking about hours or days. Possible enumerations for OpenTravel Alliance are various BUT RECOMMENDED ENUMERATIONS to be used by HTNG should only be: Hour and Day.

Element   @Attribute	Num	Description/Contents
OTA_HotelRatePlanRS / RatePlans / RatePlan / BookingRules / BookingRule / CancelPenalties / CancelPenalty / AmountPercent	1 *	Conditionally Mandatory. If a Deadline is passed, then an AmountPercent must also be indicated using the appropriate attribute.
@NnbrOfNights OR @Amount OR @Percent	1 *	Conditionally Mandatory.
OTA_HotelRatePlanRS / RatePlans / RatePlan / BookingRules / BookingRule / AcceptableGuarantees /	0..1	This is used to transfer Guarantee AND/OR Deposit policies for the rate.
OTA_HotelRatePlanRS / RatePlans / RatePlan / BookingRules / BookingRule / AcceptableGuarantees / AcceptableGuarantee	1..n	This is used to indicate the specific Guarantee AND/OR Deposit policy for the rate.
@GuaranteePolicyType	0..1	To pass a Guarantee policy, the GuaranteeType attribute will be set to GuaranteeRequired. To pass a deposit it will be set to DepositRequired.
OTA_HotelRatePlanRS / RatePlans / RatePlan / BookingRules / BookingRule / AcceptableGuarantees / AcceptableGuarantee / GuaranteesAccepted	1 *	Conditionally Mandatory – if GuaranteeType is passed.
OTA_HotelRatePlanRS / RatePlans / RatePlan / BookingRules / BookingRule / AcceptableGuarantees / AcceptableGuarantee / GuaranteesAccepted / GuaranteeAccepted	1	Mandatory.

Element   @Attribute	Num	Description/Contents
OTA_HotelRatePlanRS / RatePlans / RatePlan / BookingRules / BookingRule / AcceptableGuarantees / AcceptableGuarantee / GuaranteesAccepted / GuaranteeAccepted / PaymentCard	1	Mandatory.
@GuaranteeCode	1	The Code associated to the guarantee or deposit. Set to Card Type OpenTravel Alliance code CDT nr 1 – Credit.
@CardType	1	Used to indicate that the deposit or guarantee must be provided by credit card. Set to Card Type OpenTravel Alliance code CDT nr 1 – Credit.
OTA_HotelRatePlanRS / RatePlans / RatePlan / BookingRules / BookingRule / AcceptableGuarantees / AcceptableGuarantee / GuaranteeDescription / Text	0..1	Formatted text of the guarantee description.
@GuaranteeCode	0..1	Goes with the GuaranteeCode attribute and describes the Guarantee or Deposit requirement. For instance: GuaranteeCode = GCD, GuranteeDescription/Text = Guarantee by Corporate ID GuaranteeCode = DDP, GuranteeDescription/Text = Deposit by Check,Transfer



## 5 Appendices

### 5.1 Glossary of Terms

For the purpose of this document the following terms have been defined as follows:

Term	Definition
Extensible Markup Language (XML)	A general-purpose markup language for creating special-purpose markup languages, capable of describing different kinds of data.
Derivative Rates	Rates whose values are calculated by their association to another rate plan.
Rate Publisher/Rate Control System	A system that maintains rates and notifies Rate Subscriber(s) of changes.
Rate Requester	A system that has the need to obtain rate information.
Rate Responder	A system that maintains rate information.
Rate Subscriber	A system that requires notification of rate data from Publisher system.

### 5.2 Referenced Documents

The following table shows the documents upon which this document depends:

Document Title	Location/URL
All other HTNG Product Distribution specifications	outline of most recent versions available on <a href="#">workgroup's wiki page</a>
OpenTravel Alliance Specifications	<a href="http://www.opentravel.org/specifications">www.opentravel.org/specifications</a>