



HTNG Product Distribution Reservations Specification Version 3.0

18 April 2014

About HTNG

Hotel Technology Next Generation (HTNG) is a non-profit association with a mission to foster, through collaboration and partnership, the development of next-generation systems and solutions that will enable hoteliers and their technology vendors to do business globally in the 21st century. HTNG is recognized as the leading voice of the global hotel community, articulating the technology requirements of hotel companies of all sizes to the vendor community. HTNG facilitates the development of technology models for hospitality that will foster innovation, improve the guest experience, increase the effectiveness and efficiency of hotels, and create a healthy ecosystem of technology suppliers.

Copyright 2014, Hotel Technology Next Generation

All rights reserved.

No part of this publication may be reproduced, stored in a retrieval system, or transmitted, in any form or by any means, electronic, mechanical, photocopying, recording, or otherwise, without the prior permission of the copyright owner.

For any software code contained within this specification, permission is hereby granted, free-of-charge, to any person obtaining a copy of this specification (the "Software"), to deal in the Software without restriction, including without limitation the rights to use, copy, modify, merge, publish, distribute, sublicense, and/or sell copies of the Software, and to permit persons to whom the Software is furnished to do so, subject to the above copyright notice and this permission notice being included in all copies or substantial portions of the Software.

Manufacturers and software providers shall not claim compliance with portions of the requirements of any HTNG specification or standard, and shall not use the HTNG name or the name of the specification or standard in any statements about their respective product(s) unless the product(s) is (are) certified as compliant to the specification or standard.

THE SOFTWARE IS PROVIDED "AS IS", WITHOUT WARRANTY OF ANY KIND, EXPRESS OR IMPLIED, INCLUDING BUT NOT LIMITED TO THE WARRANTIES OF MERCHANTABILITY, FITNESS FOR A PARTICULAR PURPOSE, AND NON-INFRINGEMENT. IN NO EVENT SHALL THE AUTHORS OR COPYRIGHT HOLDERS BE LIABLE FOR ANY CLAIM, DAMAGES, OR OTHER LIABILITY, WHETHER IN AN ACTION OF CONTRACT, TORT OR OTHERWISE, ARISING FROM, OUT OF, OR IN CONNECTION WITH THE SOFTWARE OR THE USE OR OTHER DEALINGS IN THE SOFTWARE.

Permission is granted for implementers to use the names, labels, etc. contained within the specification. The intent of publication of the specification is to encourage implementations of the specification.

This specification has not been verified for avoidance of possible third-party proprietary rights. In implementing this specification, usual procedures to ensure the respect of possible third-party intellectual property rights should be followed. Visit <http://htng.org/ip-claims> to view third-party claims that have been disclosed to HTNG. HTNG offers no opinion as to whether claims listed on this site may apply to portions of this specification.

The names Hotel Technology Next Generation and HTNG, and logos depicting these names, are trademarks of Hotel Technology Next Generation. Permission is granted for implementers to use the aforementioned names in technical documentation for the purpose of acknowledging the copyright and including the notice required above. All other use of the aforementioned names and logos requires the permission of Hotel Technology Next Generation, either in written form or as explicitly permitted for the organization's members through the current terms and conditions of membership.

Table of contents

VERSION 3.0	1
18 APRIL 2014	1
1 THIS SPECIFICATION AT A GLANCE.....	5
2 DOCUMENT INFORMATION	6
2.1 DOCUMENT HISTORY	6
2.2 DOCUMENT PURPOSE	7
2.3 SCOPE	7
2.4 RELATIONSHIP TO OTHER STANDARDS.....	7
2.5 USEFUL RESOURCES.....	7
2.6 AUDIENCE.....	8
2.7 OVERVIEW	8
2.8 FURTHER CONSIDERATIONS.....	8
3 COMPONENT SCENARIOS.....	9
3.1 BOOK / UPDATE RESERVATION	12
3.1.1 Overview.....	12
3.1.2 Roles.....	12
3.1.3 Use Case.....	13
3.1.4 Message Flows	14
3.1.5 New Reservation.....	14
3.1.6 Change Reservation	17
3.1.7 Related Travelers	21
3.1.8 Accompanying Guests.....	21
3.1.9 Billing Instructions	23
3.1.10 Multi-Unit Reservations.....	23
3.1.11 Reservation with Sharers	26
3.1.12 Fixed Service	40
3.2 CANCEL RESERVATION	41
3.2.1 Overview.....	41
3.2.2 Roles.....	41
3.2.3 Use Case.....	42
3.2.4 Message Flows	43
3.3 GET PENDING RESERVATIONS	44
3.3.1 Overview.....	44
3.3.2 Roles.....	44
3.3.3 Use Case.....	44
3.3.4 Message Flows	45
3.3.5 Pull Pending Reservation	45

4	MESSAGES.....	49
4.1	BOOK OR CHANGE RESERVATION.....	49
4.1.1	<i>Data Element Table – Book Reservation Request</i>	<i>49</i>
4.1.2	<i>Data Element Table – Book or Change Reservation Response</i>	<i>74</i>
4.2	CANCEL RESERVATION	76
4.2.1	<i>Data Element Table – Cancel Reservation Request.....</i>	<i>76</i>
4.2.2	<i>Data Element Table – Cancel Reservation Response</i>	<i>80</i>
4.3	PENDING RESERVATION	83
4.3.1	<i>Data Element Table – Pending Reservation Request</i>	<i>83</i>
4.3.2	<i>Data Element Table – Pending Reservation Response</i>	<i>85</i>
4.4	PROCESS RESERVATION	112
4.4.1	<i>Data Element Table – Process Reservation Request</i>	<i>112</i>
4.4.2	<i>Data Element Table – Process Reservation Response.....</i>	<i>112</i>
5	APPENDICES	114
5.1	GLOSSARY OF TERMS.....	114
5.2	IMPLEMENTATION NOTES.....	114
5.2.1	<i>Assigning Identifiers</i>	<i>114</i>
5.2.2	<i>Errors and Warnings Usage</i>	<i>114</i>
5.2.3	<i>Sending Share Reservations</i>	<i>114</i>
5.2.4	<i>Distinction between OTA_HotelResNotifRQ@ResStatus and OTA_HotelResNotifRQ / HotelReservations / HotelReservation@ResStatus</i>	<i>114</i>
5.3	REFERENCED DOCUMENTS	115

1 This Specification at a Glance

This specification details a set of core services and a schema to be used in the exchange of Reservation information between systems.

The Reservation use cases covered in this document include the following:

- Book / Update Reservation
 - New Reservation
 - Change Reservation
 - Related Travelers
 - Accompanying Guests
 - Billing Instructions
 - Multi-Unit Reservations
 - Reservations with Sharers
 - Fixed Service
- Cancel Reservation
- Get Pending Reservation (Pull Pending Reservation)

2 Document Information

2.1 Document History

Version	Date	Author	Comments
1.0	Mar 2007	Product Distribution (PD) Workgroup	Initial release, which included Basic Reservation Notification scenario.
2.0	Mar 2008	PD Workgroup	Addition of Business Requirements section and Advanced Reservation Notification scenario.
2.1	Apr 2009	PD Workgroup	Addition of Methods of Delivery (Push and Pull) section, as well as Pull use cases; addition of Error Handling section.
2.2	Sep 2009	PD Workgroup	Removal of Error Handling section (moved to the bottom of all PD specs, as an appendix); Reorganization of Use Cases to its own section.
2.3	Apr 2010	PD Workgroup	Allowed for Taxes, CurrencyCode and Rates level; updated ResStatus and ResID_Type; additional loyalty info; other various updates.
2.4	Oct 2010	PD Workgroup	Added Birthdate and NameSuffix attributes, RatePlanInclusions.
2.5	Oct 2011	PD Workgroup	Addition of age bucket handling, meal plan code and billing profile; updates to UnitMultiplier usage and multi-unit reservation.
2.6	Apr 2012	PD Workgroup	Allows CurrencyCode and YieldableIndicator attributes at RatePlan level, the addition of AvailStatusMessage, as well as a few minor editorial updates.
2.7	Oct 2012	PD Workgroup	Allows only one instance of RoomStay; updated RatePlan description; updated RoomRate description; Updated CompanyName.
2.8	Apr 2013	PD Workgroup	Includes @Age, @ShareAllOptOutInd and @ShareAllMarketInd.
2.9	Oct 2013	PD Workgroup	Minor updates.
2.901 – 2.909	Oct–Nov 2013	PD Workgroup	Moved spec into updated template and worked on the various scenarios .

2.909 – 2.916	Nov 2013 – Feb 2014	PD Workgroup	Updated each of the sub-scenarios and data element tables.
2.917– 2.918	March 2014	PD Workgroup	Finalized scenarios and roles.
2.90	20 Mar 2014	Kylene Reese	Prepared spec for comment period.
2.99	09 Apr 2014	Kylene Reese	Prepared spec for workgroup vote.
3.0	Apr 2014	PD Workgroup	Separated the specification from the previously all-inclusive Product Distribution document.

2.2 Document Purpose

This document defines the Hotel Technology Next Generation (HTNG) scenarios and business processes for exchanging reservation messages based on OpenTravel Alliance messages. This document provides a framework for trading partners to define various attributes related to reservation controls to be exchanged between systems.

2.3 Scope

This document defines a standard HTNG implementation of the OpenTravel Alliance messages for reservation messages.

2.4 Relationship to Other Standards

This specification and its supporting schemas leverage the existing OpenTravel Alliance methodology for message construction and draws upon data definitions common to several HTNG specifications as of April 2014.

- Outline of most recent versions of all HTNG Product Distribution specifications available on [workgroup's wiki page](#)
- [OpenTravel Alliance Specifications](#)

2.5 Useful Resources

- [Implementing Web Services Using HTNG Specifications – A Quick Start Guide for Software Developers](#)
- HTNG Discussion Board – currently available at <http://www2.htng.org/discussion>
- [Error Handling Appendix](#) – This is a companion document containing mandatory and optional error codes. This document is relevant when referring to warnings or errors, which are reported in message responses.

2.6 Audience

This document is designed as a guide for project managers, programmers and analysts to gain detailed information needed to implement the distribution of reservation information between systems.

2.7 Overview

The OpenTravel Alliance messages contain a large number of optional fields, and the same information can be represented in a number of different ways.

The intent of the specification is to recommend a minimum common standard to represent complex data. The intent is also to avoid having to pass the same information in more than one field, thus avoiding confusion.

Trading partners may agree prior to implementation to use additional fields for data not covered in the scenario, including TPA extensions as per the OpenTravel Alliance schemas.

2.8 Further Considerations

The scenarios outlined provide a common starting point for the definition of the messages exchanged and that the implementers of these messages will:

1. Add expansions as needed to enable exchange of additional information while retaining compliance with the OpenTravel Alliance specifications.
2. Report expansions deemed common to HTNG for consideration as additional scenarios.
3. Report any missing elements or attributes to OpenTravel Alliance for inclusion in a future specification release.

3 Component Scenarios

Partners will be responsible for creating their own Quality Assurance Test Scripts.

The intent of the HTNG scenarios is to recommend a minimum common denominator and clarify what fields should be used to transfer the data required. The main aim is to avoid having to pass the same information in more than one field, thus avoiding confusion.

Trading partners may agree prior to implementation to use additional fields for data not covered in the scenario, including TPA extensions as per the OpenTravel Alliance specifications schema.

A Note about required fields

In each of the scenarios below, sample request and response messages are provided. In each of these samples, **bold typeface** is used on some data values specific to a given scenario that differentiates it from other scenarios; these data values **MUST** be populated in addition to the required data as outlined in the corresponding Data Element Table.

Business Requirements

Confirmation Numbers

An HTNG certified application that receives hotel reservations from upstream systems and that is normally used as a reservation broker or reservation server application shall store, and make available as criteria for reservation retrieval, the confirmation number that was originally given to the customer at the time of booking, if this information is available from the upstream (sending) system.

An HTNG certified application that transmits hotel reservations to downstream systems, shall send the confirmation number that was originally given to the guest, and the identifier of the system that generated it, within the reservation message, if this information has been provided by any upstream system. This is in addition to the application's own unique identifier or confirmation number (if different than the original).

Sharers

An HTNG certified application shall support the sharing of a single room by multiple guests, each with their own reservation, and will support the following functionalities:

- (a) Sharing reservations are each able to arrive and depart on different dates, provided that each overlaps at least one other reservation in the sharing group by at least one night.
- (b) Each reservation comprises a complete room reservation in itself, containing the same required information as in a standalone reservation. In particular, each reservation contains its own:

1. Confirmation number(s)

2. Guest name(s)
3. Arrival and departure dates
4. Rate code(s)
5. Rate amounts
6. Market segmentation
7. Source/origin code(s)
8. Cancellation policies

(c) Each reservation within the sharing group must contain identical room attributes (e.g., room category, room type, fixed room amenities).

(d) Guests may identify, at the time of booking, how the shared room rate will be settled, either by specifying a set amount to be charged to each sharing reservation, or by specifying a percentage split for each that totals 100% of the nightly rate. This information must be maintained between sending and receiving systems.

(e) The application will maintain accurate room inventory and guest counts for each night of the sharing group dates, given that the number of rooms in the share is always one (1)* for any one night in the date sequence and the guest count for one night will be equal to the total aggregated number of guests for each reservation sharing a single room on one night.

(f) At any time, the sharing group of reservations may be modified in any of the following ways:

1. Additional (new) reservations may be added to the sharing group.
2. Existing reservations may be joined into the sharing group.
3. The entire group of sharing reservations may be cancelled.
4. The entire group of sharing reservations may be modified (e.g., changing to a different rate and/or room type).
5. An individual reservation within the group may be cancelled.
6. An individual reservation within the group may be modified.
7. An individual reservation within the group may be removed (broken) from the group (but maintaining itself as an individual reservation).

* Current HTNG specifications limit the number of rooms reserved by a single reservation to one (1). In cases where the rooms are configurable suites (e.g., a room with an adjoining parlor) are involved, two reservations should be used or, alternatively, a new room type that represents the combination of both room types involved.

Methods of Delivery

- **Push Model:** The push model is the method of reservation delivery defined by the HTNG reservation v.1 and v.2 specification. In the push model, one system will “push” reservation notifications to another system by sending an OTA_HotelResNotifRQ. The receiving system will then process the notification and reply with an OTA_HotelResNotifRS to the sender.
- **Pull Model:** The pull model in contrast is a bit more complicated. Unlike the Push model that only requires two messages (reservation delivery, confirmation) to serve its purpose, the pull model requires four. This necessitates an asynchronous process be put in place.

The data flow of the messages is as follows:

Using the OTA_ReadRQ message, one system (System A) will send a message to query another system (System B) for any reservations to be processed including any criteria to filter the results. Using the OTA_ResRetrieveRS message, System B will then return a list of reservations that meet the requested criteria. System A will process the message and send an OTA_NotifReportRQ with updated reservation information or errors after processing. System B will then respond with an OTA_NotifReportRS to acknowledge receipt and data updates.

Behavior

The process being facilitated is that of updating or getting reservation information between systems [generally, but not exclusively, a Property Management System (PMS) and a Central Reservation System (CRS)].

Based on the type of information that needs to be exchanged, trading partners will select the appropriate scenario and fill in the Extensible Markup Language (XML) according to the guidelines provided in the specific scenario.

XML will then be sent to the appropriate webservice, and the correct response will be used for the selected scenario. To facilitate the ease of troubleshooting, it is highly recommended that both the sending and receiving systems log communications.

Behavior Expected Prior to Transmission

The behavior expected from a sending system will be:

- Usage of the appropriate scenario for the type of information to be sent
- Translation of reservation information into codes understood by the receiving system (if required)
- Provision of all fields classed as Mandatory in the scenario
- Validation of XML message format

- Transmission of the XML to appropriate URL set up by the receiving system using the appropriate identification criteria (SOAP user and password provided by the receiving system)

Behavior Expected from Receiving System

Upon receipt of the XML message the behavior expected from the receiving system will be:

- Process XML received by the sending system
- Update (in the update scenario) or return (in the get scenario) hotel data with reservation information contained in the XML sent by the sending system
- If update is not possible or if it is not possible to process the message: create an error response as defined in the scenario and transmit the response to the sending system
- Acknowledge successful/unsuccessful processing of the upload using the appropriate response message

Behavior Expected Upon Processing by Receiving System

Once the initial request has been processed by the receiving system, the sending system will need to:

- Be able to evaluate error responses coming from the receiving system
- React to error responses as needed: by modifying the XML and/or ensuring correct mapping tables are used

3.1 Book / Update Reservation

3.1.1 Overview

This process describes the interaction between systems where notification of changes to reservation information must be communicated.

3.1.2 Roles

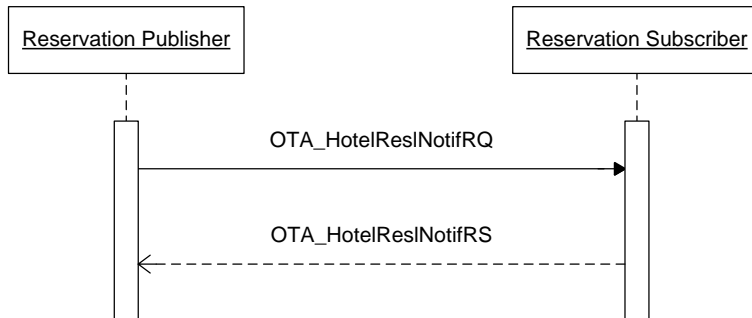
Role Name	Definition	Examples
Reservation Publisher	A system that maintains reservations and notifies Reservation Subscriber(s) of changes.	<ul style="list-style-type: none">• Central Reservation System• Property Management System• Channel Management System• Online Travel Agent
Reservation Subscriber	A system that requires notification of reservation changes as they occur in Reservation Publisher system.	<ul style="list-style-type: none">• Central Reservation System• Property Management System• Channel Management System

3.1.3 Use Case

Assumptions:	<ul style="list-style-type: none">• Publisher and Subscriber have agreed which attributes will be transmitted and accepted.• Publisher and Subscriber have agreed upon a notification model (either real-time or timed interval).
Pre-condition:	None
Trigger:	A change to reservation information occurs in the Reservation Publisher's system.
Basic Course of Events:	<ol style="list-style-type: none">1. Reservation Publisher constructs OTA_HotelResNotifRQ containing the reservation change(s).2. Reservation Publisher successfully transmits message payload.3. Reservation Subscriber receives the message payload.4. Reservation Subscriber processes OTA_HotelResNotifRQ.5. Reservation Subscriber acknowledges with the OTA_HotelResNotifRS indicating processing status of the message.6. Reservation Publisher may update their database to log what was last successfully processed by the Subscriber.
Post-condition:	Reservation Subscriber system may update their log with what was last successfully processed.
Exception Path 1:	<ol style="list-style-type: none">1. At step 3, the Reservation Subscriber does not successfully receive the message.2. Reservation Subscriber does not return the OTA_HotelResNotifRS.3. Reservation Publisher may:<ol style="list-style-type: none">a. Log the unsuccessful send.b. Resend the update notification immediately.c. Re-queue the update notification.d. Wait until the next agreed interval to send an update notification.
Exception Path 2:	<ol style="list-style-type: none">1. At Step 4, the Reservation Subscriber does not successfully process the message.2. Reservation Subscriber returns OTA_HotelResNotifRS with the appropriate error indicator.3. Reservation Publisher may:<ol style="list-style-type: none">a. Log the response error.b. Take action to correct the error and/or resend the transaction if necessary.c. Re-queue the update notification.d. Wait until the next agreed interval to send an update notification.

Alternative Path:	If the Subscriber wishes to take on role of <i>Reservation Requester</i> , it then may perform a Get Reservations .
-------------------	---

3.1.4 Message Flows



3.1.5 New Reservation

This scenario covers the basic use case in which a system with the ability to book, modify, and/or cancel reservations is notifying other systems of its activity. The intent of the messages exchanged is to keep all the participating systems up-to-date on all reservations at the property. This scenario includes simple reservations.

3.1.5.1 Sample Request

```

<OTA_HotelResNotifRQ xmlns="http://www.opentravel.org/OTA/2003/05" version="1.001"
EchoToken="879791878" ResStatus="Commit" TimeStamp=" 2014-10-09T18:51:45">
  <POS>
    <Source>
      <RequestorID Type="22" ID="TrustCRS"/>
      <!-- code 22 = Electronic reservation service provider -->
      <BookingChannel Primary="1" Type="1">
        <!-- code 1 = Global distribution system -->
        <CompanyName Code="UA">Galileo GDS</CompanyName>
      </BookingChannel>
    </Source>
    <Source>
      <BookingChannel Primary="0" Type="2">
        <!-- code 2 = Alternative distribution system -->
        <CompanyName Code="LC">Lodging</CompanyName>
      </BookingChannel>
    </Source>
  </POS>
  <HotelReservations>
    <HotelReservation CreateDateTime="2014-10-09T08:51:45" CreatorID="FLAUA">
      <UniqueID Type="14" ID="3741"/>
      <!-- code 14 = Reservation -->
      <RoomStays>
        <RoomStay MarketCode="CORP" SourceOfBusiness="TAC2" PromotionCode="FALL05">
          <RatePlans>
            <RatePlan>
              <MealsIncluded MealPlanIndicator="true" MealPlanCodes=""/>
            </RatePlan>
          </RatePlans>
          <RoomRates>
            <RoomRate RoomTypeCode="A1K" RatePlanCode="SR" NumberOfUnits="1"
RatePlanCategory="S" InvBlockCode="XYZGroup">

```

```

    <Rates>
      <Rate UnitMultiplier="1" RateTimeUnit="Day" EffectiveDate="2014-01-12"
ExpireDate="2014-01-15">
        <Base AmountAfterTax="100.00" CurrencyCode="EUR"/>
      </Rate>
      <Rate UnitMultiplier="1" RateTimeUnit="Day" EffectiveDate="2014-01-15"
ExpireDate="2014-01-17">
        <Base AmountAfterTax="150.00" CurrencyCode="EUR"/>
      </Rate>
    </Rates>
  </RoomRate>
</RoomRates>
<GuestCounts IsPerRoom="1">
  <GuestCount AgeQualifyingCode="10" Count="2"/>
  <!-- code 10 = Adult-->
  <GuestCount AgeQualifyingCode="8" Count="1"/>
  <!-- code 8 = Child-->
</GuestCounts>
<TimeSpan End="2014-01-17" Start="2014-01-12"/>
<Guarantee GuaranteeType="GuaranteeRequired" GuaranteeCode="GCC">
  <GuaranteesAccepted>
    <GuaranteeAccepted>
      <PaymentCard SecureInd="true" CardCode="VS" ExpireDate="0615"
SeriesCode="123">
        <CardHolderName>James Bond</CardHolderName>
        <CardNumber Token="4419826764234327" TokenProvider="SDP8267"
MaskedCardNumber="XXXXXXXXXXXX4327"/>
      </PaymentCard>
    </GuaranteeAccepted>
  </GuaranteesAccepted>
  <GuaranteeDescription>
    <Text>Guarantee by CC</Text>
  </GuaranteeDescription>
</Guarantee>
<Total AmountAfterTax="600.00" CurrencyCode="EUR">
  <Taxes Amount="90.00" CurrencyCode="EUR">
    <Tax Percent="17.50" Type="Inclusive" Code="19">
      <!-- code 19 = VAT/GST tax-->
    </Tax>
  </Taxes>
</Total>
<BasicPropertyInfo HotelCode="HXCAIZZ" ChainCode="HX" BrandCode="TC"/>
<TPA_Extensions/>
<ResGuestRPHs>
  <ResGuestRPH RPH="1"/>
</ResGuestRPHs>
<Memberships>
  <Membership AccountID="12345689" ProgramCode="Miles and More"/>
</Memberships>
<Comments>
  <Comment GuestViewable="1">
    <Text>Will be Travelling with Mrs Bardot</Text>
  </Comment>
  <Comment GuestViewable="0">
    <Text>Surprise gift in room</Text>
  </Comment>
</Comments>
<SpecialRequests>
  <SpecialRequest RequestCode="NS" CodeContext="roomfeature"/>
  <SpecialRequest>
    <Text>Pool view requested</Text>
  </SpecialRequest>
</SpecialRequests>
</RoomStay>
</RoomStays>
<ResGuests>
  <ResGuest ResGuestRPH="1">
    <Profiles>
      <ProfileInfo>
        <UniqueID Type="1" ID="12345" ID_Context="HotelLoyaltyProgram"/>
        <!-- code 1 = Customer-->
      </ProfileInfo>
    </Profiles>
  </ResGuest>
</ResGuests>

```

```

    <Profile ProfileType="1">
      <!--code 1 = Customer-->
      <Customer VIP_Indicator="false">
        <PersonName>
          <NamePrefix>Mr</NamePrefix>
          <GivenName>James</GivenName>
          <MiddleName>Arthur</MiddleName>
          <Surname>Bond</Surname>
        </PersonName>
        <Telephone FormattedInd="1" DefaultInd="1" PhoneNumber="44-69-
66564100" PhoneTechType="1" PhoneLocationType="7"/>
        <!-- PhoneTechType 1 = Voice, PhoneLocationType 7 = Office, -->
        <Telephone FormattedInd="1" DefaultInd="0" PhoneNumber="44-69-
66564101" PhoneTechType="3" PhoneLocationType="7"/>
        <!-- PhoneTechType 3 = Fax, PhoneLocationType 7 = Office, -->
        <Email EmailType="2">james.bond@mi5.co.uk</Email>
        <!--code 2 = Business -->
        <Address Type="1">
          <!--code 1 = Home -->
          <AddressLine>Claretta House</AddressLine>
          <AddressLine>Tower Bridge Close</AddressLine>
          <CityName>London</CityName>
          <PostalCode>EC1 2PG</PostalCode>
          <StateProv StateCode="ENG"/>
          <CountryName Code="UK"/>
        </Address>
        <CustLoyalty ProgramID="FrequentGuest" MembershipID="12345"/>
      </Customer>
    </Profile>
  </ProfileInfo>
  <ProfileInfo>
    <UniqueID Type="4" ID="53219876" ID_Context="DUNS"/>
    <!--code 4 = Company -->
    <Profile ProfileType="3">
      <!--code 3 = Corporation-->
      <CompanyInfo>
        <CompanyName>MI5</CompanyName>
        <AddressInfo>
          <AddressLine>MOD Building</AddressLine>
          <AddressLine>52 Bond Street</AddressLine>
          <CityName>London</CityName>
          <PostalCode>W1 3PQ</PostalCode>
          <StateProv StateCode="England"/>
          <CountryName Code="UK"/>
        </AddressInfo>
        <TelephoneInfo FormattedInd="1" DefaultInd="1" PhoneNumber="44-208-
1534" PhoneTechType="1"/>
        <TelephoneInfo FormattedInd="1" DefaultInd="1" PhoneNumber="44-208-
1535" PhoneTechType="3"/>
        <Email>Mi5Info@mi5.co.uk</Email>
      </CompanyInfo>
    </Profile>
  </ProfileInfo>
  <ProfileInfo>
    <UniqueID Type="5" ID="123456789" ID_Context="IATA"/>
    <!--code 5 = Travel agency-->
    <Profile ProfileType="4">
      <!--code 4 = TravelAgent-->
      <CompanyInfo>
        <CompanyName>TravelDreams</CompanyName>
        <AddressInfo>
          <AddressLine>56 Bond Street</AddressLine>
          <CityName>London</CityName>
          <PostalCode>W1 3PQ</PostalCode>
          <StateProv StateCode="England"/>
          <CountryName Code="UK"/>
        </AddressInfo>
        <TelephoneInfo FormattedInd="1" DefaultInd="1"
PhoneNumber="442081522" PhoneTechType="1"/>
        <TelephoneInfo FormattedInd="1" DefaultInd="1"
PhoneNumber="442081523" PhoneTechType="3"/>

```



```

        <Email>reservations@traveldreams.co.uk</Email>
      </CompanyInfo>
    </Profile>
  </ProfileInfo>
</Profiles>
<ArrivalTransport>
  <TransportInfo Time="2014-01-12T14:00:00" Type="Air" ID="BA125"/>
</ArrivalTransport>
<DepartureTransport>
  <TransportInfo Time="2014-01-17T19:00:00" Type="Air" ID="BA126"/>
</DepartureTransport>
</ResGuest>
</ResGuests>
<ResGlobalInfo>
  <HotelReservationIDs>
    <HotelReservationID ResID_Type="24" ResID_Value="MPW96E"/>
    <!--code 24 = Travel Agent PNR-->
  </HotelReservationIDs>
</ResGlobalInfo>
</HotelReservation>
</HotelReservations>
</OTA_HotelResNotifRQ>

```

3.1.5.2 Sample Response

```

<OTA_HotelResNotifRS xmlns="http://www.opentravel.org/OTA/2003/05"
EchoToken="879791900" TimeStamp="2014-01-26T19:31:02-05:00" version="1.001"
ResResponseType="Modified">
  <Success/>
  <HotelReservations>
    <HotelReservation>
      <UniqueID Type="14" ID="3741"/>
      <ResGlobalInfo>
        <HotelReservationIDs>
          <HotelReservationID ResID_Type="10" ResID_Value="82329987"/>
          <!-- Res ID Type 10 = Hotel from OpenTravel Alliance code table UIT -->
        </HotelReservationIDs>
      </ResGlobalInfo>
    </HotelReservation>
  </HotelReservations>
</OTA_HotelResNotifRS>

```

3.1.6 Change Reservation

This scenario covers the basic use case in which a system with the ability to book or modify reservations is notifying other systems of a reservation change. The intent of the messages exchanged is to keep all the participating systems up-to-date on all reservations at the property.

3.1.6.1 Sample Request

```

<OTA_HotelResNotifRQ xmlns="http://www.opentravel.org/OTA/2003/05" version="1.001"
EchoToken="879791900" ResStatus="Modify" TimeStamp="2014-10-09T19:30:30">
  <POS>
    <Source>
      <RequestorID Type="22" ID="TrustCRS"/>
      <!-- code 22 = Electronic reservation service provider -->
      <BookingChannel Primary="1" Type="1">
        <!-- code 1 = Global distribution system -->
        <CompanyName Code="UA">Galileo GDS</CompanyName>
      </BookingChannel>
    </Source>
    <Source>
      <BookingChannel Primary="0" Type="2">

```

```

    <!-- code 2 = Alternative distribution system -->
    <CompanyName Code="LC">Lodging</CompanyName>
  </BookingChannel>
</Source>
</POS>
<HotelReservations>
  <HotelReservation CreateDateTime="2014-10-09T08:51:45" CreatorID="FLAUA"
LastModifierID="AMR" LastModifyDateTime="2014-12-21T19:30:30">
    <UniqueID Type="14" ID="3741"/>
    <!-- code 14 = Reservation -->
    <RoomStays>
      <RoomStay MarketCode="CORP" SourceOfBusiness="TAC2" PromotionCode="FALL05">
        <RatePlans>
          <RatePlan>
            <MealsIncluded MealPlanIndicator="true" MealPlanCodes=""/>
          </RatePlan>
        </RatePlans>
        <RoomRates>
          <RoomRate RoomTypeCode="A2K" RatePlanCode="SR" NumberOfUnits="1"
RatePlanCategory="S" InvBlockCode="XYZGroup">
            <Rates>
              <Rate UnitMultiplier="1" RateTimeUnit="Day" EffectiveDate="2015-01-12"
ExpireDate="2015-01-15">
                <Base AmountAfterTax="100.00" CurrencyCode="EUR"/>
              </Rate>
              <Rate UnitMultiplier="1" RateTimeUnit="Day" EffectiveDate="2015-01-15"
ExpireDate="2015-01-17">
                <Base AmountAfterTax="150.00" CurrencyCode="EUR"/>
              </Rate>
            </Rates>
          </RoomRate>
        </RoomRates>
        <GuestCounts IsPerRoom="1">
          <GuestCount AgeQualifyingCode="10" Count="2"/>
          <!-- code 10 = Adult-->
          <GuestCount AgeQualifyingCode="8" Count="1"/>
          <!-- code 8 = Child-->
        </GuestCounts>
        <TimeSpan End="2015-01-17" Start="2015-01-12"/>
        <DepositPayments>
          <GuaranteePayment>
            <AcceptedPayments>
              <AcceptedPayment PaymentTransactionTypeCode="reserve">
                <PaymentCard SecureInd="true" CardCode="VS" ExpireDate="0615"
SeriesCode="123">
                  <CardHolderName>James Bond</CardHolderName>
                  <CardNumber Token="4321826764234327" TokenProvider="SDP8267"
MaskedCardNumber="XXXXXXXXXXXX4327"/>
                </PaymentCard>
              </AcceptedPayment>
            </AcceptedPayments>
            <AmountPercent Amount="50.00" CurrencyCode="EUR"/>
            <Deadline OffsetTimeUnit="Day" OffsetDropTime="BeforeArrival"
OffsetUnitMultiplier="10"/>
          </GuaranteePayment>
        </DepositPayments>
        <Total AmountAfterTax="600.00" CurrencyCode="EUR">
          <Taxes Amount="90.00" CurrencyCode="EUR">
            <Tax Percent="17.50" Type="Inclusive" Code="19">
              <!-- code 19 = VAT/GST tax-->
            </Tax>
          </Taxes>
        </Total>
        <BasicPropertyInfo HotelCode="HXCAIZZ" ChainCode="HX" BrandCode="TC"/>
        <ResGuestRPHs>
          <ResGuestRPH RPH="1"/>
        </ResGuestRPHs>
        <Memberships>
          <Membership AccountID="12345689" ProgramCode="Miles and More"/>
        </Memberships>
        <Comments>

```

```

        <Comment GuestViewable="1">
            <Text>Will be Travelling with Mrs Bardot</Text>
        </Comment>
        <Comment GuestViewable="0">
            <Text>Surprise gift in room</Text>
        </Comment>
    </Comments>
    <SpecialRequests>
        <SpecialRequest RequestCode="NS" CodeContext="RoomFeature"/>
        <SpecialRequest>
            <Text>Pool view requested</Text>
        </SpecialRequest>
    </SpecialRequests>
</RoomStay>
</RoomStays>
<ResGuests>
    <ResGuest ResGuestRPH="1">
        <Profiles>
            <ProfileInfo>
                <UniqueID Type="1" ID="12345" ID_Context="HotelLoyaltyProgram"/>
                <!-- code 1 = Customer -->
                <Profile ProfileType="1">
                    <!--code 1 = Customer -->
                    <Customer>
                        <PersonName>
                            <NamePrefix>Mr</NamePrefix>
                            <GivenName>James</GivenName>
                            <MiddleName>Arthur</MiddleName>
                            <Surname>Bond</Surname>
                        </PersonName>
                        <Telephone FormattedInd="1" DefaultInd="1" PhoneNumber="44-69-
66564100" PhoneTechType="1" PhoneLocationType="7"/>
                        <!-- PhoneTechType 1 = Voice, PhoneLocationType 7 = Office, -->
                        <Telephone FormattedInd="1" DefaultInd="0" PhoneNumber="44-69-
66564101" PhoneTechType="3" PhoneLocationType="7"/>
                        <!-- PhoneTechType 3 = Fax, PhoneLocationType 7 = Office, -->
                        <Email EmailType="2">james.bond@mi5.co.uk</Email>
                        <!--code 2 = Business -->
                        <Address Type="1">
                            <!--code 1 = Home -->
                            <AddressLine>Claretta House</AddressLine>
                            <AddressLine>Tower Bridge Close</AddressLine>
                            <CityName>London</CityName>
                            <PostalCode>EC1 2PG</PostalCode>
                            <StateProv StateCode="ENG"/>
                            <CountryName Code="UK"/>
                        </Address>
                        <CustLoyalty ProgramID="FrequentGuest" MembershipID="12345"/>
                    </Customer>
                </Profile>
            </ProfileInfo>
            <ProfileInfo>
                <UniqueID Type="4" ID="53219876" ID_Context="DUNS"/>
                <!--code 4 = Company -->
                <Profile ProfileType="3">
                    <!--code 3 = Corporation-->
                    <CompanyInfo>
                        <CompanyName>MI5</CompanyName>
                        <AddressInfo>
                            <AddressLine>MOD Building</AddressLine>
                            <AddressLine>52 Bond Street</AddressLine>
                            <CityName>London</CityName>
                            <PostalCode>W1 3PQ</PostalCode>
                            <StateProv StateCode="England"/>
                            <CountryName Code="UK"/>
                        </AddressInfo>
                        <TelephoneInfo FormattedInd="1" DefaultInd="1" PhoneNumber="44-208-
1534" PhoneTechType="1"/>
                        <TelephoneInfo FormattedInd="1" DefaultInd="1" PhoneNumber="44-208-
1535" PhoneTechType="3"/>
                        <Email>Mi5Info@mi5.co.uk</Email>
                    </CompanyInfo>
                </Profile>
            </ProfileInfo>
        </Profiles>
    </ResGuest>
</ResGuests>

```

```

        </CompanyInfo>
        <TPA_Extensions>
          <Key1>53219876</Key1>
          <Key2>110</Key2>
        </TPA_Extensions>
      </Profile>
    </ProfileInfo>
    <ProfileInfo>
      <UniqueID Type="5" ID="123456789" ID_Context="IATA"/>
      <!--code 5 = Travel agency-->
      <Profile ProfileType="4">
        <!--code 4 = TravelAgent-->
        <CompanyInfo>
          <CompanyName>TravelDreams</CompanyName>
          <AddressInfo>
            <AddressLine>56 Bond Street</AddressLine>
            <CityName>London</CityName>
            <PostalCode>W1 3PQ</PostalCode>
            <StateProv StateCode="England"/>
            <CountryName Code="UK"/>
          </AddressInfo>
          <TelephoneInfo FormattedInd="1" DefaultInd="1"
PhoneNumber="442081522" PhoneTechType="1"/>
          <TelephoneInfo FormattedInd="1" DefaultInd="1"
PhoneNumber="442081523" PhoneTechType="3"/>
          <Email>reservations@traveldreams.co.uk</Email>
        </CompanyInfo>
      </Profile>
    </ProfileInfo>
  </Profiles>
  <ArrivalTransport>
    <TransportInfo Time="2015-01-12T14:00:00" Type="Air" ID="BA125"/>
  </ArrivalTransport>
  <DepartureTransport>
    <TransportInfo Time="2015-01-17T19:00:00" Type="Air" ID="BA126"/>
  </DepartureTransport>
</ResGuest>
</ResGuests>
<ResGlobalInfo>
  <HotelReservationIDs>
    <HotelReservationID ResID_Type="24" ResID_Value="MPW96E"/>
    <!--code 24 = Travel Agent PNR-->
    <HotelReservationID ResID_Type="10" ResID_Value="914562"/>
    <!--code 10 = PMS confirmation nr-->
  </HotelReservationIDs>
</ResGlobalInfo>
</HotelReservation>
</HotelReservations>
</OTA_HotelResNotifRQ>

```

3.1.6.2 Sample Response

```

<OTA_HotelResNotifRS xmlns="http://www.opentravel.org/OTA/2003/05"
EchoToken="879791900" TimeStamp="2014-01-26T19:31:02-05:00" version="1.001"
ResResponseType="Modified">
  <Success/>
  <HotelReservations>
    <HotelReservation>
      <UniqueID Type="14" ID="3741"/>
      <ResGlobalInfo>
        <HotelReservationIDs>
          <HotelReservationID ResID_Type="10" ResID_Value="82329987"/>
          <!-- Res ID Type 10 = Hotel from OpenTravel Alliance code table UIT -->
        </HotelReservationIDs>
      </ResGlobalInfo>
    </HotelReservation>
  </HotelReservations>
</OTA_HotelResNotifRS>

```

3.1.7 Related Travelers

Related travelers are defined as guests sharing one room with the Primary Guest. Related travelers do not need any additional differentiation other than the additional name on the reservation.

Specific to this message:

- RelatedTraveler

3.1.7.1 Sample Message

```
<OTA_HotelResNotifRQ>
  <HotelReservations>
    <HotelReservation>
      <ResGuests>
        <ResGuest>
          <Profiles>
            <ProfileInfo>
              <Profile>
                <Customer>
                  ...
                  <RelatedTraveler Relation="Business Associate">
                    <PersonName>
                      <NamePrefix>MS</NamePrefix>
                      <GivenName>Second</GivenName>
                      <MiddleName>Guest</MiddleName>
                      <Surname>Bardot</Surname>
                    </PersonName>
                  </RelatedTraveler>
                  ...
                </Customer>
              </Profile>
            </ProfileInfo>
          </Profiles>
        </ResGuest>
      </ResGuests>
    </HotelReservation>
  </HotelReservations>
</OTA_HotelResNotifRQ>
```

3.1.8 Accompanying Guests

Accompanying guests are additional non-primary profiles attached to a reservation. This may be necessary in systems that would like a full profile of guests occupying the room, but implementing a share may not be required.

Specific to this message:

- One ResGuest with PrimaryIndicator = "1" and at least one ResGuest with PrimaryIndicator = "0"

3.1.8.1 Sample Request

```
<OTA_HotelResNotifRQ>
  ...
  <HotelReservations>
    <HotelReservation>
      ...
      <ResGuests>
```

```

<ResGuest ResGuestRPH="1" PrimaryIndicator="1">
  <Profiles>
    <ProfileInfo>
      <UniqueID Type="1" ID="12345" ID_Context="HotelLoyaltyProgram"/>
      <!-- code 1 = Customer-->
      <Profile ProfileType="1">
        <!--code 1 = Customer-->
        <Customer>
          <PersonName>
            <NamePrefix>Mr</NamePrefix>
            <GivenName>James</GivenName>
            <MiddleName>Arthur</MiddleName>
            <Surname>Bond</Surname>
          </PersonName>
          <Telephone FormattedInd="1" DefaultInd="1" PhoneNumber="44-69-
66564100" PhoneTechType="1" PhoneLocationType="7"/>
          <!-- PhoneTechType 1 = Voice, PhoneLocationType 7 = Office, -->
          <Telephone FormattedInd="1" DefaultInd="0" PhoneNumber="44-69-
66564101" PhoneTechType="3" PhoneLocationType="7"/>
          <!-- PhoneTechType 3 = Fax, PhoneLocationType 7 = Office, -->
          <Email EmailType="2">james.bond@mi5.co.uk</Email>
          <!--code 2 = Business -->
          <Address Type="1">
            <!--code 1 = Home -->
            <AddressLine>Claretta House</AddressLine>
            <AddressLine>Tower Bridge Close</AddressLine>
            <CityName>London</CityName>
            <PostalCode>EC1 2PG</PostalCode>
            <StateProv StateCode="ENG"/>
            <CountryName Code="UK"/>
          </Address>
          <CustLoyalty ProgramID="FrequentGuest" MembershipID="12345"/>
        </Customer>
      </Profile>
    </ProfileInfo>
  </Profiles>
</ResGuest>
<ResGuest ResGuestRPH="2" PrimaryIndicator="0">
  <Profiles>
    <ProfileInfo>
      <UniqueID Type="1" ID="567234" ID_Context="HotelLoyaltyProgram"/>
      <!-- code 1 = Customer-->
      <Profile ProfileType="1">
        <!--code 1 = Customer-->
        <Customer>
          <PersonName>
            <NamePrefix>Mr</NamePrefix>
            <GivenName>Xavier</GivenName>
            <MiddleName>Marco</MiddleName>
            <Surname>Peabody</Surname>
          </PersonName>
          <Telephone FormattedInd="1" DefaultInd="1" PhoneNumber="44-69-
93643172" PhoneTechType="1" PhoneLocationType="7"/>
          <Email EmailType="2">xavier.peabody@mi5.co.uk</Email>
          <CustLoyalty ProgramID="FrequentGuest" MembershipID="567234"/>
        </Customer>
      </Profile>
    </ProfileInfo>
  </Profiles>
</ResGuest>
</ResGuests>
</HotelReservation>
</HotelReservations>
</OTA_HotelResNotifRQ>

```

3.1.9 Billing Instructions

Billing instructions are used to determine the types of charges that are able to be routed to a master account.

Specific to this message:

- BillingInstructionCode

3.1.9.1 Sample Request

```
<OTA_HotelResNotifRQ>
...
  <HotelReservations>
    <HotelReservation>
      <POS/>
      <UniqueID/>
      <RoomStays/>
      <Services/>
      <BillingInstructionCode BillingCode="ROOM" AccountNumber="485729" End="2014-08-
26" AuthorizationCode="" Start="2014-08-24" Description="Room Charges"
BillingType="3">
        <ResGuestRPH RPH="1"/>
      </BillingInstructionCode>
      <ResGuests/>
      <ResGlobalInfo/>
      <WrittenConfInst/>
      <Queue/>
      <TPA_Extensions/>
    </HotelReservation>
  </HotelReservations>
...
</OTA_HotelResNotifRQ>
```

3.1.10 Multi-Unit Reservations

A multi-unit reservation is a single reservation for multiple rooms. This allows for ease of management of a single reservation record versus needing to manage multiple identical reservations.

Limitations and Assumptions

Multi-unit reservations share the same room type, rate definition, stay date range, etc.; they are identical.

Multi-unit reservations should have identical “per room” occupancy. When GuestCounts@IsPerUnit = "true", each unit has the same number of guests. Optionally, if two trading partners wish to handle the number of guests as a pool of total occupants, then GuestCounts@IsPerUnit = "false". It should be up to the trading partners to decide if the guest count must be exactly divisible by the number of rooms in the reservations or if the PMS splits the guests as it sees fit.

A multi-unit reservation should remain “un-split” for as long as possible to enable users to make modifications to a single record (if the changes apply to all rooms). Example: if a multi-unit reservation is already split into single reservations and the agent wants to extend the stay

for the whole group by two days, the user would have to check/modify each single reservation accordingly. If the reservation is “un-split”, one modification is necessary.

The ResID_Type 31 is used to pass an identifier in the HotelReservationID node, signifying that this reservation has been or will be split into multiple reservations. This Divided Reservation ID should be the same as the original CRS ResID_Type 14, which the PMS will return to the CRS, along with the PMS ID, ResIDType 10.

Whenever a PMS divides a reservation, it will decrement the NumberOfUnits by one and send a modification to the CRS. In addition, it will send a notification for a new reservation. For both messages, a ResID_Type 14 (the original CRS number), a ResID_Type 31 (the divided reservation number), and ResID_Type 10 (generated by the PMS) will need to be sent.

In the following example of the initial reservation sent from CRS.

In the HotelReservationIDs node, we would have:

```
...
<RoomStays>
  <RoomStay NumberOfUnits="3"/>
</RoomStays>
...
<HotelReservationIDs>
  <HotelReservationID ResID_Type="14" ResID_Source = "xxxCRS" ResID_Value="539568"/>
</HotelReservationIDs>
...
```

The PMS assigns the ResID_Type 31 ID and responds with this and the PMS confirmation number for the multi room booking, which are added to the HotelReservationIDs node as follows:

```
...
<RoomStays>
  <RoomStay NumberOfUnits="3"/>
</RoomStays>
...
<HotelReservationIDs>
  <HotelReservationID ResID_Type="31" ResID_Source = "xxxCRS" ResID_Value="539568"/>
  <HotelReservationID ResID_Type="14" ResID_Source = "xxxCRS" ResID_Value="539568"/>
  <HotelReservationID ResID_Type="10" ResID_Source = "yyyPMS" ResID_Value="14701"/>
</HotelReservationIDs>
...
```

Any subsequent modification of the unsplit reservation would be transferred from system to system always carrying ResIDs type 31, 14 and 10.

At the time of the split (which at this stage is expected to occur in the PMS only), the PMS would then send up a Modification for res 539568 to reduce the number of rooms (NumberOfUnits) to 1, and 2 ADD messages, to create the additional individual reservations.

The MODIFIED booking would contain:

```
...
<RoomStays>
  <RoomStay NumberofUnits="1"/>
</RoomStays>
...
<HotelReservationIDs>
  <HotelReservationID ResID_Type="31" ResID_Source = "xxxCRS" ResID_Value="539568"/>
  <HotelReservationID ResID_Type="14" ResID_Source = "xxxCRS" ResID_Value="539568"/>
  <HotelReservationID ResID_Type="10" ResID_Source = "yyyPMS" ResID_Value="14701"/>
</HotelReservationIDs>
...
```

The 2 NEW bookings would contain

```
...
<RoomStays>
  <RoomStay NumberofUnits="1"/>
</RoomStays>
...
<HotelReservationIDs>
  <HotelReservationID ResID_Type="31" ResID_Source = "xxxCRS" ResID_Value="539568"/>
  <HotelReservationID ResID_Type="10" ResID_Source = "yyyPMS" ResID_Value="14702"/>
</HotelReservationIDs>
...
```

And

```
...
<RoomStays>
  <RoomStay NumberofUnits="1"/>
</RoomStays>
...
<HotelReservationIDs>
  <HotelReservationID ResID_Type="31" ResID_Source = "xxxCRS" ResID_Value="539568"/>
  <HotelReservationID ResID_Type="10" ResID_Source = "yyyPMS" ResID_Value="14703"/>
</HotelReservationIDs>
...
```

Note: There will be no ResID_Type 14 as the CRS number would be unknown at this stage.

It would also be possible to only split out 1 of the 3 rooms, in which case the original multi-unit booking would be modified and a NumberOfUnits="2" would need to be sent.

Upon receipt of the MOD and ADDs from PMS, the CRS System would reduce the number of rooms in the original booking, and would then create the additional bookings, each with their own unique confirmation number, but each belonging to same Divided Reservation using an ID of 1234.

Flow from PMS to CRS:

If the multi room reservation is originated in the PMS, the reservation would be sent to the CRS with:

```
...
<UniqueID Type="10" ID="PMS4567"/>
...
<RoomStays>
  <RoomStay NumberofUnits="3"/>
</RoomStays>
...
```

```
<HotelReservationIDs>
  <HotelReservationID ResID_Type="10" ResID_Source = "yyyPMS" ResID_Value="4567"/>
</HotelReservationIDs>
...
```

The CRS would process the booking and, as the number of rooms is >1, would generate a Divided Reservation ID (ResID_Type 31).

The confirmation message back to the PMS would therefore include:

```
...
<RoomStays>
  <RoomStay NumberofUnits="3"/>
</RoomStays>
...
<HotelReservationIDs>
  <HotelReservationID ResID_Type="10" ResID_Source = "yyyPMS" ResID_Value="4567"/>
  <HotelReservationID ResID_Type="14" ResID_Source = "xxxCRS" ResID_Value="539570"/>
  <HotelReservationID ResID_Type="31" ResID_Source = "xxxCRS" ResID_Value="539570"/>
</HotelReservationIDs>
...
```

When the reservation is then split, the same process would apply, whereby the original booking would be modified to reduce the number of and any individual reservation taken out of the bundle would be sent as an ADD with the relevant ResID_Type 31.

Modifications to split reservations will be possible at both CRS and PMS level as per normal individual reservations.

3.1.11 Reservation with Sharers

"Sharers" are defined as one or more guest sharing one room with the Primary Guest. Sharers, however, may need to have different folios, charging privileges, etc.

Specific to this message:

- Each share reservation will contain a UnitMultiplier of 1.
- The reservation price will reflect the portion of the rate value a given sharer is responsible for paying.

Split Share – Same Arrival and Departure

Guest 1 arrives 2014-11-12 and departs on 2014-11-15

Guest 2 arrives 2014-11-12 and departs on 2014-11-15

They split the rate 50%

The sample below assumes the first reservation of the share has already been booked.

3.1.11.1 Sample Request

```
<OTA_HotelResNotifRQ xmlns="http://www.opentravel.org/OTA/2003/05" version="1.001"
EchoToken="879791900" ResStatus="Book" Timestamp="2014-10-09T19:30:30">
  <POS>
    <Source>
      <RequestorID Type="22" ID="SynXis"/>
      <!-- code 22 = Electronic reservation service provider -->
    </Source>
  </POS>
</OTA_HotelResNotifRQ>
```

```

    <BookingChannel Primary="1" Type="5">
      <!-- code 5 = Central Reservation system -->
      <CompanyName Code="UA">SynXis CRS</CompanyName>
    </BookingChannel>
  </Source>
</POS>
<HotelReservations>
  <HotelReservation CreateDateTime="2013-12-09T08:51:45" CreatorID="Syn"
LastModifierID="Syn" LastModifyDateTime="2013-12-09T08:51:45">
    <UniqueID Type="14" ID="10107SY3741"/>
    <!-- code 14 = Reservation -->
    <RoomStays>
      <RoomStay>
        <RoomRates>
          <RoomRate RoomTypeCode="KB" RatePlanCode="RAC" NumberOfUnits="1">
            <Rates>
              <Rate UnitMultiplier="1" RateTimeUnit="Day" EffectiveDate="2015-11-12"
ExpireDate="2015-11-15">
                <Base AmountAfterTax="100.00" CurrencyCode="USD"/>
              </Rate>
            </Rates>
          </RoomRate>
        </RoomRates>
        <GuestCounts IsPerRoom="1">
          <GuestCount AgeQualifyingCode="10" Count="2"/>
          <!-- code 10 = Adult -->
          <GuestCount AgeQualifyingCode="8" Count="1"/>
          <!-- code 8 = Child -->
        </GuestCounts>
        <TimeSpan End="2015-11-15" Start="2015-11-12"/>
        <Guarantee GuaranteeType="GuaranteeRequired" GuaranteeCode="GCC">
          <GuaranteesAccepted>
            <GuaranteeAccepted>
              <PaymentCard SecureInd="true" CardCode="VS" ExpireDate="0615"
SeriesCode="123">
                <CardHolderName>James Bond</CardHolderName>
                <CardNumber Token="4419826764234327" TokenProvider="SDP8267"
MaskedCardNumber="XXXXXXXXXXXX4327"/>
              </PaymentCard>
            </GuaranteeAccepted>
          </GuaranteesAccepted>
          <GuaranteeDescription>
            <Text>Guarantee by cc</Text>
          </GuaranteeDescription>
        </Guarantee>
        <Total AmountAfterTax="300.00" CurrencyCode="USD"/>
        <BasicPropertyInfo HotelCode="10107" ChainCode="6835"/>
        <ResGuestRPHs>
          <ResGuestRPH RPH="1"/>
        </ResGuestRPHs>
      </RoomStay>
    </RoomStays>
    <ResGuests>
      <ResGuest ResGuestRPH="1">
        <Profiles>
          <ProfileInfo>
            <!-- code 1 = Customer -->
            <Profile ProfileType="1">
              <!-- code 1 = Customer -->
              <Customer>
                <PersonName>
                  <NamePrefix>Mr</NamePrefix>
                  <GivenName>James</GivenName>
                  <MiddleName>Arthur</MiddleName>
                  <Surname>Bond</Surname>
                </PersonName>
                <Telephone FormattedInd="1" DefaultInd="1" PhoneNumber="44-69-
66564100" PhoneTechType="1" PhoneLocationType="7"/>
                <!-- PhoneTechType 1 = Voice, PhoneLocationType 7 = Office, -->
                <Telephone FormattedInd="1" DefaultInd="0" PhoneNumber="44-69-
66564101" PhoneTechType="3" PhoneLocationType="7"/>
              </Customer>
            </Profile>
          </ProfileInfo>
        </Profiles>
      </ResGuest>
    </ResGuests>
  </HotelReservation>
</HotelReservations>

```

```

        <!-- PhoneTechType 3 = Fax, PhoneLocationType 7 = Office, -->
        <Email EmailType="2">james.bond@mi5.co.uk</Email>
        <!--code 2 = Business -->
        <Address Type="1">
            <!--code 1 = Home -->
            <AddressLine>Claretta House</AddressLine>
            <AddressLine>Tower Bridge Close</AddressLine>
            <CityName>London</CityName>
            <PostalCode>EC1 2PG</PostalCode>
            <StateProv StateCode="ENG"/>
            <CountryName Code="UK"/>
        </Address>
    </Customer>
</Profile>
</ProfileInfo>
</Profiles>
</ResGuest>
</ResGuests>
<ResGlobalInfo>
    <HotelReservationIDs>
        <HotelReservationID ResID_Type="14" ResID_Value="10107SY3741" ForGuest="1"/>
        <!--code 14 = reservation-->
        <HotelReservationID ResID_Type="27" ResID_Value="10107SY3742" ForGuest="0"/>
        <!--code 27 = Associated shared reservation-->
    </HotelReservationIDs>
</ResGlobalInfo>
</HotelReservation>
<HotelReservation CreateDateTime="2013-12-09T08:55:45" CreatorID="Syn"
LastModifierID="Syn" LastModifyDateTime="2013-12-09T08:55:45">
    <UniqueID Type="14" ID="10107SY3741"/>
    <!-- code 14 = Reservation -->
    <RoomStays>
        <RoomStay>
            <RoomRates>
                <RoomRate RoomTypeCode="KB" RatePlanCode="RAC" NumberOfUnits="1">
                    <Rates>
                        <Rate UnitMultiplier="1" RateTimeUnit="Day" EffectiveDate="2014-11-12"
ExpireDate="2014-11-15">
                            <Base AmountAfterTax="100.00" CurrencyCode="USD"/>
                        </Rate>
                    </Rates>
                </RoomRate>
            </RoomRates>
            <GuestCounts IsPerRoom="1">
                <GuestCount AgeQualifyingCode="10" Count="1"/>
                <!-- code 10 = Adult-->
            </GuestCounts>
            <TimeSpan End="2014-11-15" Start="2014-11-12"/>
            <Guarantee GuaranteeType="GuaranteeRequired" GuaranteeCode="GCC">
                <GuaranteesAccepted>
                    <GuaranteeAccepted>
                        <PaymentCard SecureInd="true" CardCode="VS" ExpireDate="0616"
SeriesCode="123">
                            <CardHolderName>Felix Leiter</CardHolderName>
                            <CardNumber Token="4111725382171111" TokenProvider="SDP8267"
MaskedCardNumber="XXXXXXXXXXXX4327"/>
                        </PaymentCard>
                    </GuaranteeAccepted>
                </GuaranteesAccepted>
                <GuaranteeDescription>
                    <Text>Guarantee by cc</Text>
                </GuaranteeDescription>
            </Guarantee>
            <Total AmountAfterTax="300.00" CurrencyCode="USD"/>
            <BasicPropertyInfo HotelCode="10107" ChainCode="6835"/>
            <ResGuestRPHs>
                <ResGuestRPH RPH="1"/>
            </ResGuestRPHs>
        </RoomStay>
    </RoomStays>
</ResGuests>

```

```

    <ResGuest ResGuestRPH="1">
      <Profiles>
        <ProfileInfo>
          <!-- code 1 = Customer-->
          <Profile ProfileType="1">
            <!--code 1 = Customer -->
            <Customer>
              <PersonName>
                <NamePrefix>Mr</NamePrefix>
                <GivenName>Felix</GivenName>
                <Surname>Leiter</Surname>
              </PersonName>
              <Telephone FormattedInd="1" DefaultInd="1" PhoneNumber="703-482-
0623" PhoneTechType="1" PhoneLocationType="7"/>
              <!-- PhoneTechType 1 = Voice, PhoneLocationType 7 = Office, -->
              <Email EmailType="2">felix.leiter@cia.gov</Email>
              <!--code 2 = Business -->
              <Address Type="1">
                <!--code 1 = Home -->
                <AddressLine>Central Intelligence Agency</AddressLine>
                <AddressLine>Office of Public Affairs</AddressLine>
                <CityName>Washington</CityName>
                <PostalCode>20505</PostalCode>
                <StateProv StateCode="DC"/>
                <CountryName Code="US"/>
              </Address>
            </Customer>
          </Profile>
        </ProfileInfo>
      </Profiles>
    </ResGuest>
  </ResGuests>
  <ResGlobalInfo>
    <HotelReservationIDs>
      <!--code 14 = reservation-->
      <HotelReservationID ResID_Type="14" ResID_Value="10107SY3742" ForGuest="1"/>
      <!--code 27 = Associated shared reservation-->
      <HotelReservationID ResID_Type="27" ResID_Value="10107SY3741" ForGuest="0"/>
    </HotelReservationIDs>
  </ResGlobalInfo>
</HotelReservation>
</HotelReservations>
</OTA_HotelResNotifRQ>

```

3.1.11.2 Sample Response

```

<OTA_HotelResNotifRS xmlns="http://www.opentravel.org/OTA/2003/05"
EchoToken="879791900" TimeStamp="2014-01-26T19:31:02-05:00" version="1.001"
ResResponseType="Modified">
  <Success/>
  <HotelReservations>
    <HotelReservation>
      <UniqueID Type="14" ID="3742"/>
      <ResGlobalInfo>
        <HotelReservationIDs>
          <HotelReservationID ResID_Type="10" ResID_Value="82329988"/>
          <HotelReservationID ResID_Type="27" ResID_Value="10107SY3741" ForGuest="0"/>
        </HotelReservationIDs>
      </ResGlobalInfo>
    </HotelReservation>
    <HotelReservation>
      <UniqueID Type="14" ID="3741"/>
      <ResGlobalInfo>
        <HotelReservationIDs>
          <HotelReservationID ResID_Type="10" ResID_Value="82329987"/>
          <HotelReservationID ResID_Type="27" ResID_Value="10107SY3742" ForGuest="0"/>
        </HotelReservationIDs>
      </ResGlobalInfo>
    </HotelReservation>
  </HotelReservations>

```

```
</OTA_HotelResNotifRS>
```

Split Share – Different Arrival, Same Departure

Guest 1 arrives 2014-11-12 and departs on 2014-11-15

Guest 2 arrives 2014-11-13 and departs on 2014-11-15

They split the rate 50%

Note that for the nonoverlapping night (2014-11-12) Guest 1 is paying 100% of the rate value.

3.1.11.3 Sample Request

```
<OTA_HotelResNotifRQ xmlns="http://www.opentravel.org/OTA/2003/05" version="1.001"
EchoToken="879791900" ResStatus="Commit" TimeStamp="2014-10-09T19:30:30">
  <POS>
    <Source>
      <RequestorID Type="22" ID="SynXis"/>
      <!-- code 22 = Electronic reservation service provider -->
      <BookingChannel Primary="1" Type="5">
        <!-- code 5 = Central Reservation system -->
        <CompanyName Code="UA">SynXis CRS</CompanyName>
      </BookingChannel>
    </Source>
  </POS>
  <HotelReservations>
    <HotelReservation CreateDateTime="2013-12-09T08:51:45" CreatorID="Syn"
LastModifierID="Syn" LastModifyDateTime="2013-12-09T08:51:45">
      <UniqueID Type="14" ID="10107SY3741"/>
      <!-- code 14 = Reservation -->
      <RoomStays>
        <RoomStay>
          <RoomRates>
            <RoomRate RoomTypeCode="KB" RatePlanCode="RAC" NumberOfUnits="1">
              <Rates>
                <Rate UnitMultiplier="1" RateTimeUnit="Day" EffectiveDate="2014-11-12"
ExpireDate="2014-11-13">
                  <Base AmountAfterTax="200.00" CurrencyCode="USD"/>
                </Rate>
                <Rate UnitMultiplier="1" RateTimeUnit="Day" EffectiveDate="2014-11-13"
ExpireDate="2014-11-15">
                  <Base AmountAfterTax="100.00" CurrencyCode="USD"/>
                </Rate>
              </Rates>
            </RoomRate>
          </RoomRates>
          <GuestCounts IsPerRoom="1">
            <GuestCount AgeQualifyingCode="10" Count="1"/>
            <!-- code 10 = Adult -->
          </GuestCounts>
          <TimeSpan End="2014-11-15" Start="2014-11-12"/>
          <Guarantee GuaranteeType="GuaranteeRequired" GuaranteeCode="GCC">
            <GuaranteesAccepted>
              <GuaranteeAccepted>
                <PaymentCard SecureInd="true" CardCode="VS" ExpireDate="0615"
SeriesCode="123">
                  <CardHolderName>James Bond</CardHolderName>
                  <CardNumber Token="4419826764234327" TokenProvider="SDP8267"
MaskedCardNumber="XXXXXXXXXXXX4327"/>
                </PaymentCard>
              </GuaranteeAccepted>
            </GuaranteesAccepted>
            <GuaranteeDescription>
              <Text>Guarantee by cc</Text>
            </GuaranteeDescription>
          </Guarantee>
          <Total AmountAfterTax="400.00" CurrencyCode="USD"/>
          <BasicPropertyInfo HotelCode="10107" ChainCode="6835"/>
        </RoomStay>
      </RoomStays>
    </HotelReservation>
  </HotelReservations>
</OTA_HotelResNotifRQ>
```

```

        <ResGuestRPHs>
          <ResGuestRPH RPH="1"/>
        </ResGuestRPHs>
      </RoomStay>
    </RoomStays>
  </ResGuests>
  <ResGuest ResGuestRPH="1">
    <Profiles>
      <ProfileInfo>
        <!-- code 1 = Customer-->
        <Profile ProfileType="1">
          <!--code 1 = Customer -->
          <Customer>
            <PersonName>
              <NamePrefix>Mr</NamePrefix>
              <GivenName>James</GivenName>
              <MiddleName>Arthur</MiddleName>
              <Surname>Bond</Surname>
            </PersonName>
            <Telephone FormattedInd="1" DefaultInd="1" PhoneNumber="44-69-
66564100" PhoneTechType="1" PhoneLocationType="7"/>
            <!-- PhoneTechType 1 = Voice, PhoneLocationType 7 = Office, -->
            <Telephone FormattedInd="1" DefaultInd="0" PhoneNumber="44-69-
66564101" PhoneTechType="3" PhoneLocationType="7"/>
            <!-- PhoneTechType 3 = Fax, PhoneLocationType 7 = Office, -->
            <Email EmailType="2">james.bond@mi5.co.uk</Email>
            <!--code 2 = Business -->
            <Address Type="1">
              <!--code 1 = Home -->
              <AddressLine>Claretta House</AddressLine>
              <AddressLine>Tower Bridge Close</AddressLine>
              <CityName>London</CityName>
              <PostalCode>EC1 2PG</PostalCode>
              <StateProv StateCode="ENG"/>
              <CountryName Code="UK"/>
            </Address>
          </Customer>
        </Profile>
      </ProfileInfo>
    </Profiles>
  </ResGuest>
</ResGuests>
<ResGlobalInfo>
  <HotelReservationIDs>
    <HotelReservationID ResID_Type="14" ResID_Value="10107SY3741" ForGuest="1"/>
    <!--code 14 = reservation-->
    <HotelReservationID ResID_Type="27" ResID_Value="10107SY3742" ForGuest="0"/>
    <!--code 27 = Associated shared reservation-->
  </HotelReservationIDs>
</ResGlobalInfo>
</HotelReservation>
<HotelReservation CreateDateTime="2013-12-09T08:55:45" CreatorID="Syn"
LastModifierID="Syn" LastModifyDateTime="2013-12-09T08:55:45">
  <UniqueID Type="14" ID="10107SY3741"/>
  <!-- code 14 = Reservation -->
  <RoomStays>
    <RoomStay>
      <RoomRates>
        <RoomRate RoomTypeCode="KB" RatePlanCode="RAC" NumberOfUnits="1">
          <Rates>
            <Rate UnitMultiplier="1" RateTimeUnit="Day" EffectiveDate="2014-11-13"
ExpireDate="2014-11-15">
              <Base AmountAfterTax="100.00" CurrencyCode="USD"/>
            </Rate>
          </Rates>
        </RoomRate>
      </RoomRates>
      <GuestCounts IsPerRoom="1">
        <GuestCount AgeQualifyingCode="10" Count="1"/>
        <!-- code 10 = Adult-->
      </GuestCounts>
    </RoomStay>
  </RoomStays>
</HotelReservation>

```

```

    <TimeSpan End="2014-11-15" Start="2014-11-13"/>
    <Guarantee GuaranteeType="GuaranteeRequired" GuaranteeCode="GCC">
      <GuaranteesAccepted>
        <GuaranteeAccepted>
          <PaymentCard SecureInd="true" CardCode="VS" ExpireDate="0616"
SeriesCode="123">
            <CardHolderName>Felix Leiter</CardHolderName>
            <CardNumber Token="4111725382171111" TokenProvider="SDP8267"
MaskedCardNumber="XXXXXXXXXXXX4327"/>
          </PaymentCard>
        </GuaranteeAccepted>
      </GuaranteesAccepted>
      <GuaranteeDescription>
        <Text>Guarantee by cc</Text>
      </GuaranteeDescription>
    </Guarantee>
    <Total AmountAfterTax="200.00" CurrencyCode="USD"/>
    <BasicPropertyInfo HotelCode="10107" ChainCode="6835"/>
    <ResGuestRPHs>
      <ResGuestRPH RPH="1"/>
    </ResGuestRPHs>
  </RoomStay>
</RoomStays>
<ResGuests>
  <ResGuest ResGuestRPH="1">
    <Profiles>
      <ProfileInfo>
        <!-- code 1 = Customer-->
        <Profile ProfileType="1">
          <!--code 1 = Customer -->
          <Customer>
            <PersonName>
              <NamePrefix>Mr</NamePrefix>
              <GivenName>Felix</GivenName>
              <Surname>Leiter</Surname>
            </PersonName>
            <Telephone FormattedInd="1" DefaultInd="1" PhoneNumber="703-482-
0623" PhoneTechType="1" PhoneLocationType="7"/>
            <!-- PhoneTechType 1 = Voice, PhoneLocationType 7 = Office, -->
            <Email EmailType="2">felix.leiter@cia.gov</Email>
            <!--code 2 = Business -->
            <Address Type="1">
              <!--code 1 = Home -->
              <AddressLine>Central Intelligence Agency</AddressLine>
              <AddressLine>Office of Public Affairs</AddressLine>
              <CityName>Washington</CityName>
              <PostalCode>20505</PostalCode>
              <StateProv StateCode="DC"/>
              <CountryName Code="US"/>
            </Address>
          </Customer>
        </Profile>
      </ProfileInfo>
    </Profiles>
  </ResGuest>
</ResGuests>
<ResGlobalInfo>
  <HotelReservationIDs>
    <!--code 14 = reservation-->
    <HotelReservationID ResID_Type="14" ResID_Value="10107SY3742" ForGuest="1"/>
    <!--code 27 = Associated shared reservation-->
    <HotelReservationID ResID_Type="27" ResID_Value="10107SY3741" ForGuest="0"/>
  </HotelReservationIDs>
</ResGlobalInfo>
</HotelReservation>
</HotelReservations>
</OTA_HotelResNotifRQ>

```


3.1.11.4 Sample Response

```

<OTA_HotelResNotifRS xmlns="http://www.opentravel.org/OTA/2003/05"
EchoToken="879791900" TimeStamp="2014-01-26T19:31:02-05:00" version="1.001"
ResResponseType="Modified">
  <Success/>
  <HotelReservations>
    <HotelReservation>
      <UniqueID Type="14" ID="3742"/>
      <ResGlobalInfo>
        <HotelReservationIDs>
          <HotelReservationID ResID_Type="10" ResID_Value="82329988"/>
          <HotelReservationID ResID_Type="27" ResID_Value="10107SY3741" ForGuest="0"/>
        </HotelReservationIDs>
      </ResGlobalInfo>
    </HotelReservation>
    <HotelReservation>
      <UniqueID Type="14" ID="3741"/>
      <ResGlobalInfo>
        <HotelReservationIDs>
          <HotelReservationID ResID_Type="10" ResID_Value="82329987"/>
          <HotelReservationID ResID_Type="27" ResID_Value="10107SY3742" ForGuest="0"/>
        </HotelReservationIDs>
      </ResGlobalInfo>
    </HotelReservation>
  </HotelReservations>
</OTA_HotelResNotifRS>

```

Split Share – Different Arrival and Departure

Room price per night = \$500

Guest 1 arrives 2014-12-01 and departs on 2014-12-07

Guest 2 arrives 2014-12-01 and departs on 2014-12-04

Guest 3 arrives 2014-12-03 and departs on 2014-12-06

They split the rate evenly

3.1.11.5 Sample Request

```

<OTA_HotelResNotifRQ xmlns="http://www.opentravel.org/OTA/2003/05" version="1.001"
EchoToken="879791900" ResStatus="Commit" TimeStamp="2014-10-09T19:30:30">
  <POS>
    <Source>
      <RequestorID Type="22" ID="SynXis"/>
      <!-- code 22 = Electronic reservation service provider -->
      <BookingChannel Primary="1" Type="5">
        <!-- code 5 = Central Reservation system -->
        <CompanyName Code="UA">SynXis CRS</CompanyName>
      </BookingChannel>
    </Source>
  </POS>
  <HotelReservations>
    <HotelReservation CreateDateTime="2013-12-09T08:51:45" CreatorID="Syn"
LastModifierID="Syn" LastModifyDateTime="2013-12-09T08:51:45">
      <UniqueID Type="14" ID="10107SY3741"/>
      <!-- code 14 = Reservation -->
      <RoomStays>
        <RoomStay>
          <RoomRates>
            <RoomRate RoomTypeCode="KB" RatePlanCode="RAC" NumberOfUnits="1">
              <Rates>
                <Rate UnitMultiplier="1" RateTimeUnit="Day" EffectiveDate="2014-12-01"
ExpireDate="2014-12-03">
                  <Base AmountAfterTax="250.00" CurrencyCode="USD"/>
                </Rate>
                <Rate UnitMultiplier="1" RateTimeUnit="Day" EffectiveDate="2014-12-03"
ExpireDate="2014-12-04">
                  <Base AmountAfterTax="166.67" CurrencyCode="USD"/>
                </Rate>
              </Rates>
            </RoomRate>
          </RoomRates>
        </RoomStay>
      </RoomStays>
    </HotelReservation>
  </HotelReservations>
</OTA_HotelResNotifRQ>

```

```

        </Rate>
        <Rate UnitMultiplier="1" RateTimeUnit="Day" EffectiveDate="2014-12-04"
ExpireDate="2014-12-06">
            <Base AmountAfterTax="250.00" CurrencyCode="USD"/>
        </Rate>
        <Rate UnitMultiplier="1" RateTimeUnit="Day" EffectiveDate="2014-12-06"
ExpireDate="2014-12-07">
            <Base AmountAfterTax="500.00" CurrencyCode="USD"/>
        </Rate>
    </Rates>
</RoomRate>
</RoomRates>
<GuestCounts IsPerRoom="1">
    <GuestCount AgeQualifyingCode="10" Count="1"/>
</GuestCounts>
<TimeSpan End="2014-12-07" start="2014-12-01"/>
<Total AmountAfterTax="1666.67" CurrencyCode="USD"/>
<BasicPropertyInfo HotelCode="10107" ChainCode="6835"/>
<ResGuestRPHs>
    <ResGuestRPH RPH="1"/>
</ResGuestRPHs>
</RoomStay>
</RoomStays>
<ResGuests>
    <ResGuest ResGuestRPH="1">
        <Profiles>
            <ProfileInfo>
                <!-- code 1 = Customer-->
                <Profile ProfileType="1">
                    <!--code 1 = Customer -->
                    <Customer>
                        <PersonName>
                            <NamePrefix>Mr</NamePrefix>
                            <GivenName>James</GivenName>
                            <MiddleName>Arthur</MiddleName>
                            <Surname>Bond</Surname>
                        </PersonName>
                    </Customer>
                </Profile>
            </ProfileInfo>
        </Profiles>
    </ResGuest>
</ResGuests>
<ResGlobalInfo>
    <HotelReservationIDs>
        <HotelReservationID ResID_Type="14" ResID_Value="10107SY3741" ForGuest="1"/>
        <!--code 14 = reservation-->
        <HotelReservationID ResID_Type="27" ResID_Value="10107SY3742" ForGuest="0"/>
        <!--code 27 = Associated shared reservation-->
        <HotelReservationID ResID_Type="27" ResID_Value="10107SY3743" ForGuest="0"/>
        <!--code 27 = Associated shared reservation-->
    </HotelReservationIDs>
</ResGlobalInfo>
</HotelReservation>
<HotelReservation CreateDateTime="2013-12-09T08:55:45" CreatorID="Syn"
LastModifierID="Syn" LastModifyDateTime="2013-12-09T08:55:45">
    <UniqueID Type="14" ID="10107SY3742"/>
    <!-- code 14 = Reservation -->
    <RoomStays>
        <RoomStay>
            <RoomRates>
                <RoomRate RoomTypeCode="KB" RatePlanCode="RAC" NumberOfUnits="1">
                    <Rates>
                        <Rate UnitMultiplier="1" RateTimeUnit="Day" EffectiveDate="2014-12-01"
ExpireDate="2014-12-03">
                            <Base AmountAfterTax="250.00" CurrencyCode="USD"/>
                        </Rate>
                        <Rate UnitMultiplier="1" RateTimeUnit="Day" EffectiveDate="2014-12-03"
ExpireDate="2014-12-04">
                            <Base AmountAfterTax="166.66" CurrencyCode="USD"/>
                        </Rate>
                    </Rates>
                </RoomRate>
            </RoomRates>
        </RoomStay>
    </RoomStays>

```

```

        </Rates>
      </RoomRate>
    </RoomRates>
    <GuestCounts IsPerRoom="1">
      <GuestCount AgeQualifyingCode="10" Count="1"/>
      <!-- code 10 = Adult-->
    </GuestCounts>
    <TimeSpan End="2014-12-05" Start="2014-12-01"/>
    <Total AmountAfterTax="200.00" CurrencyCode="USD"/>
    <BasicPropertyInfo HotelCode="10107" ChainCode="6835"/>
    <ResGuestRPHs>
      <ResGuestRPH RPH="1"/>
    </ResGuestRPHs>
  </RoomStay>
</RoomStays>
<ResGuests>
  <ResGuest ResGuestRPH="1">
    <Profiles>
      <ProfileInfo>
        <!-- code 1 = Customer-->
        <Profile ProfileType="1">
          <!--code 1 = Customer -->
          <Customer>
            <PersonName>
              <NamePrefix>Mr</NamePrefix>
              <GivenName>Felix</GivenName>
              <Surname>Leiter</Surname>
            </PersonName>
          </Customer>
        </Profile>
      </ProfileInfo>
    </Profiles>
  </ResGuest>
</ResGuests>
<ResGlobalInfo>
  <HotelReservationIDs>
    <HotelReservationID ResID_Type="14" ResID_Value="10107SY3742" ForGuest="1"/>
    <!--code 14 = reservation-->
    <HotelReservationID ResID_Type="27" ResID_Value="10107SY3741" ForGuest="0"/>
    <!--code 27 = Associated shared reservation-->
    <HotelReservationID ResID_Type="27" ResID_Value="10107SY3743`"
ForGuest="0"/>
    <!--code 27 = Associated shared reservation-->
  </HotelReservationIDs>
</ResGlobalInfo>
</HotelReservation>
  <HotelReservation CreateDateTime="2013-12-09T08:55:45" CreatorID="Syn"
LastModifierID="Syn" LastModifyDateTime="2013-12-09T08:55:45">
    <UniqueID Type="14" ID="10107SY3743"/>
    <!-- code 14 = Reservation -->
    <RoomStays>
      <RoomStay>
        <RoomRates>
          <RoomRate RoomTypeCode="KB" RatePlanCode="RAC" NumberOfUnits="1">
            <Rates>
              <Rate UnitMultiplier="1" RateTimeUnit="Day" EffectiveDate="2014-12-03"
ExpireDate="2014-12-04">
                <Base AmountAfterTax="166.66" CurrencyCode="USD"/>
              </Rate>
              <Rate UnitMultiplier="1" RateTimeUnit="Day" EffectiveDate="2014-12-04"
ExpireDate="2014-12-06">
                <Base AmountAfterTax="250.00" CurrencyCode="USD"/>
              </Rate>
            </Rates>
          </RoomRate>
        </RoomRates>
        <GuestCounts IsPerRoom="1">
          <GuestCount AgeQualifyingCode="10" Count="1"/>
          <!-- code 10 = Adult-->
        </GuestCounts>
        <TimeSpan End="2014-12-06" Start="2014-12-03"/>
      </RoomStay>
    </RoomStays>
  </HotelReservation>
</Reservations>

```

```

    <Total AmountAfterTax="200.00" CurrencyCode="USD"/>
    <BasicPropertyInfo HotelCode="10107" ChainCode="6835"/>
    <ResGuestRPHs>
      <ResGuestRPH RPH="1"/>
    </ResGuestRPHs>
  </RoomStay>
</RoomStays>
<ResGuests>
  <ResGuest ResGuestRPH="1">
    <Profiles>
      <ProfileInfo>
        <!-- code 1 = Customer-->
        <Profile ProfileType="1">
          <!--code 1 = Customer -->
          <Customer>
            <PersonName>
              <NamePrefix>Mr</NamePrefix>
              <GivenName>Rene</GivenName>
              <Surname>Mathis</Surname>
            </PersonName>
          </Customer>
        </Profile>
      </ProfileInfo>
    </Profiles>
  </ResGuest>
</ResGuests>
<ResGlobalInfo>
  <HotelReservationIDs>
    <HotelReservationID ResID_Type="14" ResID_Value="10107SY3743" ForGuest="1"/>
    <!--code 14 = reservation-->
    <HotelReservationID ResID_Type="27" ResID_Value="10107SY3741" ForGuest="0"/>
    <!--code 27 = Associated shared reservation-->
    <HotelReservationID ResID_Type="27" ResID_Value="10107SY3742" ForGuest="0"/>
    <!--code 27 = Associated shared reservation-->
  </HotelReservationIDs>
</ResGlobalInfo>
</HotelReservation>
</HotelReservations>
</OTA_HotelResNotifRQ>

```

3.1.11.6 Sample Response

```

<OTA_HotelResNotifRS xmlns="http://www.opentravel.org/OTA/2003/05"
EchoToken="879791900" TimeStamp="2014-01-26T19:31:02-05:00" Version="1.001"
ResResponseType="Modified">
  <Success/>
  <HotelReservations>
    <HotelReservation>
      <UniqueID Type="14" ID="3743"/>
      <ResGlobalInfo>
        <HotelReservationIDs>
          <HotelReservationID ResID_Type="10" ResID_Value="82329989"/>
          <HotelReservationID ResID_Type="27" ResID_Value="10107SY3741" ForGuest="0"/>
          <HotelReservationID ResID_Type="27" ResID_Value="10107SY3742" ForGuest="0"/>
        </HotelReservationIDs>
      </ResGlobalInfo>
    </HotelReservation>
    <HotelReservation>
      <UniqueID Type="14" ID="3742"/>
      <ResGlobalInfo>
        <HotelReservationIDs>
          <HotelReservationID ResID_Type="10" ResID_Value="82329988"/>
          <HotelReservationID ResID_Type="27" ResID_Value="10107SY3741" ForGuest="0"/>
          <HotelReservationID ResID_Type="27" ResID_Value="10107SY3743" ForGuest="0"/>
        </HotelReservationIDs>
      </ResGlobalInfo>
    </HotelReservation>
    <HotelReservation>
      <UniqueID Type="14" ID="3741"/>
      <ResGlobalInfo>

```

```

    <HotelReservationIDs>
      <HotelReservationID ResID_Type="10" ResID_Value="82329987"/>
      <HotelReservationID ResID_Type="27" ResID_Value="10107SY3742" ForGuest="0"/>
      <HotelReservationID ResID_Type="27" ResID_Value="10107SY3743" ForGuest="0"/>
    </HotelReservationIDs>
  </ResGlobalInfo>
</HotelReservation>
</HotelReservations>
</OTA_HotelResNotifRS>

```

Breaking Shares

As an example, three guests are sharing a single room. If the first guest no longer wishes to be part of the share (e.g. wants to be treated as a standalone reservation or has a need to cancel their reservation), the final picture of the share representation must be sent. If the first guest's reservation must be cancelled after the share is broken, a [Cancel Reservation](#) message may be sent.

3.1.11.7 Sample Request

```

<OTA_HotelResNotifRQ xmlns="http://www.opentravel.org/OTA/2003/05" Version="1.001"
EchoToken="879791900" ResStatus="Modify" TimeStamp="2014-10-09T19:30:30">
  <POS>
    <Source>
      <RequestorID Type="22" ID="SynXis"/>
      <!-- code 22 = Electronic reservation service provider -->
      <BookingChannel Primary="1" Type="5">
        <!-- code 5 = Central Reservation system -->
        <CompanyName Code="UA">SynXis CRS</CompanyName>
      </BookingChannel>
    </Source>
  </POS>
  <HotelReservations>
    <HotelReservation CreateDateTime="2014-09-09T08:51:45" CreatorID="Syn"
LastModifierID="Syn" LastModifyDateTime="2014-09-09T08:51:45">
      <UniqueID Type="14" ID="10107SY3741"/>
      <!-- code 14 = Reservation -->
      <RoomStays>
        <RoomStay>
          <RoomRates>
            <RoomRate RoomTypeCode="KB" RatePlanCode="RAC" NumberOfUnits="1">
              <Rates>
                <Rate UnitMultiplier="1" RateTimeUnit="Day" EffectiveDate="2015-05-10"
ExpireDate="2015-05-16">
                  <Base AmountAfterTax="90.00" CurrencyCode="USD"/>
                </Rate>
              </Rates>
            </RoomRate>
          </RoomRates>
          <GuestCounts IsPerRoom="1">
            <GuestCount AgeQualifyingCode="10" Count="1"/>
          </GuestCounts>
          <TimeSpan End="2015-05-16" Start="2015-05-10"/>
          <Total AmountAfterTax="540.00" CurrencyCode="USD"/>
          <BasicPropertyInfo HotelCode="10107" ChainCode="6835"/>
          <ResGuestRPHs>
            <ResGuestRPH RPH="1"/>
          </ResGuestRPHs>
        </RoomStay>
      </RoomStays>
      <ResGuests>
        <ResGuest ResGuestRPH="1">
          <Profiles>
            <ProfileInfo>
              <!-- code 1 = Customer-->
              <Profile ProfileType="1">

```

```

        <!--code 1 = Customer -->
        <Customer>
            <PersonName>
                <NamePrefix>Mr</NamePrefix>
                <GivenName>James</GivenName>
                <MiddleName>Arthur</MiddleName>
                <Surname>Bond</Surname>
            </PersonName>
        </Customer>
    </Profile>
</ProfileInfo>
</Profiles>
</ResGuest>
</ResGuests>
<ResGlobalInfo>
    <HotelReservationIDs>
        <HotelReservationID ResID_Type="14" ResID_Value="10107SY3741" ForGuest="1"/>
        <!--code 14 = reservation-->
    </HotelReservationIDs>
</ResGlobalInfo>
</HotelReservation>
<HotelReservation CreateDateTime="2013-12-09T08:55:45" CreatorID="Syn"
LastModifierID="Syn" LastModifyDateTime="2013-12-09T08:55:45">
    <UniqueID Type="14" ID="10107SY3742"/>
    <!-- code 14 = Reservation -->
    <RoomStays>
        <RoomStay>
            <RoomRates>
                <RoomRate RoomTypeCode="KB" RatePlanCode="RAC" NumberOfUnits="1">
                    <Rates>
                        <Rate UnitMultiplier="1" RateTimeUnit="Day" EffectiveDate="2015-05-11"
ExpireDate="2015-05-15">
                            <Base AmountAfterTax="45.00" CurrencyCode="USD"/>
                        </Rate>
                        <Rate UnitMultiplier="1" RateTimeUnit="Day" EffectiveDate="2015-05-15"
ExpireDate="2015-05-16">
                            <Base AmountAfterTax="90.00" CurrencyCode="USD"/>
                        </Rate>
                    </Rates>
                </RoomRate>
            </RoomRates>
            <GuestCounts IsPerRoom="1">
                <GuestCount AgeQualifyingCode="10" Count="1"/>
                <!-- code 10 = Adult-->
            </GuestCounts>
            <TimeSpan End="2015-05-16" Start="2015-05-11"/>
            <Total AmountAfterTax="270.00" CurrencyCode="USD"/>
            <BasicPropertyInfo HotelCode="10107" ChainCode="6835"/>
            <ResGuestRPHs>
                <ResGuestRPH RPH="1"/>
            </ResGuestRPHs>
        </RoomStay>
    </RoomStays>
</ResGuests>
    <ResGuest ResGuestRPH="1">
        <Profiles>
            <ProfileInfo>
                <!-- code 1 = Customer-->
                <Profile ProfileType="1">
                    <!--code 1 = Customer -->
                    <Customer>
                        <PersonName>
                            <NamePrefix>Mr</NamePrefix>
                            <GivenName>Felix</GivenName>
                            <Surname>Leiter</Surname>
                        </PersonName>
                    </Customer>
                </Profile>
            </ProfileInfo>
        </Profiles>
    </ResGuest>

```

```

</ResGuests>
<ResGlobalInfo>
  <HotelReservationIDs>
    <HotelReservationID ResID_Type="14" ResID_Value="10107SY3742" ForGuest="1"/>
    <!--code 14 = reservation-->
    <HotelReservationID ResID_Type="27" ResID_Value="10107SY3743" ForGuest="0"/>
    <!--code 27 = Associated shared reservation-->
  </HotelReservationIDs>
</ResGlobalInfo>
</HotelReservation>
<HotelReservation CreateDateTime="2013-12-09T08:55:45" CreatorID="Syn"
LastModifierID="Syn" LastModifyDateTime="2013-12-09T08:55:45">
  <UniqueID Type="14" ID="10107SY3743"/>
  <!-- code 14 = Reservation -->
  <RoomStays>
    <RoomStay>
      <RoomRates>
        <RoomRate RoomTypeCode="KB" RatePlanCode="RAC" NumberOfUnits="1">
          <Rates>
            <Rate UnitMultiplier="1" RateTimeUnit="Day" EffectiveDate="2015-05-10"
ExpireDate="2015-05-11">
              <Base AmountAfterTax="90.00" CurrencyCode="USD"/>
            </Rate>
            <Rate UnitMultiplier="1" RateTimeUnit="Day" EffectiveDate="2015-05-11"
ExpireDate="2015-05-15">
              <Base AmountAfterTax="45.00" CurrencyCode="USD"/>
            </Rate>
          </Rates>
        </RoomRate>
      </RoomRates>
      <GuestCounts IsPerRoom="1">
        <GuestCount AgeQualifyingCode="10" Count="1"/>
        <!-- code 10 = Adult-->
      </GuestCounts>
      <TimeSpan End="2015-05-15" Start="2015-05-10"/>
      <Total AmountAfterTax="270.00" CurrencyCode="USD"/>
      <BasicPropertyInfo HotelCode="10107" ChainCode="6835"/>
      <ResGuestRPHs>
        <ResGuestRPH RPH="1"/>
      </ResGuestRPHs>
    </RoomStay>
  </RoomStays>
  <ResGuests>
    <ResGuest ResGuestRPH="1">
      <Profiles>
        <ProfileInfo>
          <!-- code 1 = Customer-->
          <Profile ProfileType="1">
            <!--code 1 = Customer -->
            <Customer>
              <PersonName>
                <NamePrefix>Mr</NamePrefix>
                <GivenName>Rene</GivenName>
                <Surname>Mathis</Surname>
              </PersonName>
            </Customer>
          </Profile>
        </ProfileInfo>
      </Profiles>
    </ResGuest>
  </ResGuests>
</ResGlobalInfo>
  <HotelReservationIDs>
    <HotelReservationID ResID_Type="14" ResID_Value="10107SY3743" ForGuest="1"/>
    <!--code 14 = reservation-->
    <HotelReservationID ResID_Type="27" ResID_Value="10107SY3742" ForGuest="0"/>
    <!--code 27 = Associated shared reservation-->
  </HotelReservationIDs>
</ResGlobalInfo>
</HotelReservation>
</HotelReservations>

```

```
</OTA_HotelResNotifRQ>
```

3.1.11.8 *Sample Response*

```
<OTA_HotelResNotifRS xmlns="http://www.opentravel.org/OTA/2003/05"
EchoToken="879791900" TimeStamp="2014-01-26T19:31:02-05:00" version="1.001"
ResResponseType="Modified">
  <Success/>
  <HotelReservations>
    <HotelReservation>
      <UniqueID Type="14" ID="3743"/>
      <ResGlobalInfo>
        <HotelReservationIDs>
          <HotelReservationID ResID_Type="10" ResID_Value="82329989"/>
          <HotelReservationID ResID_Type="27" ResID_Value="10107SY3742" ForGuest="0"/>
        </HotelReservationIDs>
      </ResGlobalInfo>
    </HotelReservation>
    <HotelReservation>
      <UniqueID Type="14" ID="3742"/>
      <ResGlobalInfo>
        <HotelReservationIDs>
          <HotelReservationID ResID_Type="10" ResID_Value="82329988"/>
          <HotelReservationID ResID_Type="27" ResID_Value="10107SY3743" ForGuest="0"/>
        </HotelReservationIDs>
      </ResGlobalInfo>
    </HotelReservation>
    <HotelReservation>
      <UniqueID Type="14" ID="3741"/>
      <ResGlobalInfo>
        <HotelReservationIDs>
          <HotelReservationID ResID_Type="10" ResID_Value="82329987"/>
        </HotelReservationIDs>
      </ResGlobalInfo>
    </HotelReservation>
  </HotelReservations>
</OTA_HotelResNotifRS>
```

3.1.12 *Fixed Service*

Simple Fixed Service

Posted once per stay, price not included in room price.

3.1.12.1 *Sample Request*

```
<OTA_HotelResNotifRQ>
...
  <HotelReservations>
    <HotelReservation>
      ...
      <Services>
        <Service ServicePricingType="1" ServiceInventoryCode="CHAMP" Inclusive="0"
Quantity="1">
          <!--PricingType = 1 per stay-->
          <Price>
            <Total CurrencyCode="USD" AmountAfterTax="24.00"/>
          </Price>
        </Service>
      </Services>
    </HotelReservation>
  </HotelReservations>
</OTA_HotelResNotifRQ>
```


Fixed Service – Per Person, Per Night

Different price for adult and child,
Service only for the first two days of stay
Price not included in room price.

3.1.12.2 Sample Request

```
<OTA_HotelResNotifRQ>
...
  <HotelReservations>
    <HotelReservation>
      ...
      <Services>
        <Service ServicePricingType="Per person per night"
ServiceInventoryCode="SNACK" Inclusive="0" Quantity="1">
          <Price>
            <Total CurrencyCode="USD" AmountAfterTax="8.00"/>
          </Price>
          <ServiceDetails>
            <GuestCounts>
              <GuestCount AgeQualifyingCode="10" Count="1"/>
            </GuestCounts>
            <TimeSpan End="2014-11-13" Start="2014-11-12"/>
          </ServiceDetails>
        </Service>
        <Service ServicePricingType="Per person per night"
ServiceInventoryCode="SNACK" Inclusive="0" Quantity="1">
          <Price>
            <Total CurrencyCode="USD" AmountAfterTax="6.00"/>
          </Price>
          <ServiceDetails>
            <GuestCounts>
              <GuestCount AgeQualifyingCode="8" Count="1"/>
            </GuestCounts>
            <TimeSpan End="2014-11-13" Start="2014-11-12"/>
          </ServiceDetails>
        </Service>
      </Services>
    </HotelReservation>
  </HotelReservations>
</OTA_HotelResNotifRQ>
```

3.2 Cancel Reservation

3.2.1 Overview

This process describes the interaction between systems where a cancelled reservation must be communicated.

3.2.2 Roles

Role Name	Definition	Examples
Reservation Publisher	A system that maintains reservations and notifies Reservation Subscriber(s) of changes.	<ul style="list-style-type: none">• Central Reservation System• Property Management System• Channel Management System• Online Travel Agent

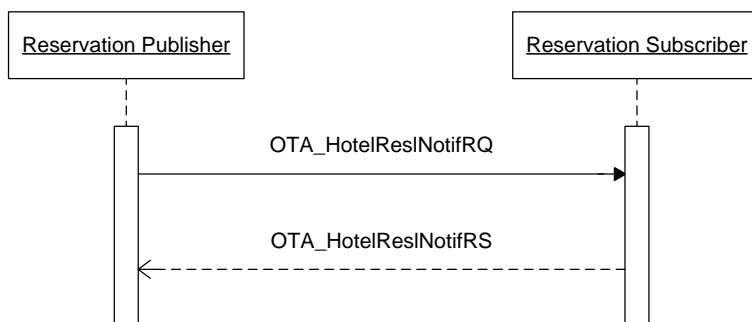
Reservation Subscriber	A system that requires notification of reservation changes as they occur in Reservation Publisher system.	<ul style="list-style-type: none">• Central Reservation System• Property Management System• Channel Management System
------------------------	---	---

3.2.3 Use Case

Assumptions:	<ul style="list-style-type: none">• Publisher and Subscriber have agreed which attributes will be transmitted and accepted.• Publisher and Subscriber have agreed upon a notification model (either real-time or timed interval).
Pre-condition:	An existing reservation is in both the Publisher and Subscriber systems.
Trigger:	The Reservation Publisher determines an existing reservations needs to be cancelled.
Basic Course of Events:	<ol style="list-style-type: none">1. Reservation Publisher constructs OTA_HotelResNotifRQ containing the instruction to cancel the reservation(s).2. Reservation Publisher successfully transmits message payload.3. Reservation Subscriber receives the message payload.4. Reservation Subscriber processes OTA_HotelResNotifRQ.5. Reservation Subscriber acknowledges with the OTA_HotelResNotifRS indicating processing status of the message.
Post-condition:	Reservation Subscriber system may update their log with what was last successfully processed.
Exception Path 1:	<ol style="list-style-type: none">1. At step 3, the Reservation Subscriber does not successfully receive the message.2. Reservation Subscriber does not return the OTA_HotelResNotifRS.3. Reservation Publisher may:<ol style="list-style-type: none">a. Log the unsuccessful send.b. Resend the cancel notification immediately.c. Re-queue the cancel notification.d. Wait until the next agreed interval to send a cancel notification.

Exception Path 2:	<ol style="list-style-type: none"> 1. At Step 4, the Reservation Subscriber does not successfully process the message. 2. Reservation Subscriber returns OTA_HotelResNotifRS with the appropriate error indicator. 3. Reservation Publisher may: <ol style="list-style-type: none"> e. Log the response error. f. Take action to correct the error and/or resend the transaction if necessary. g. Re-queue the cancel notification. h. Wait until the next agreed interval to send a cancel notification.
Alternative Path:	None

3.2.4 Message Flows



3.2.4.1 Sample Request

```

<OTA_HotelResNotifRQ xmlns="http://www.opentravel.org/OTA/2003/05" version="1.001"
EchoToken="879791950" ResStatus="Cancel" TimeStamp=" 2014-10-09T20:51:45">
  <POS>
    <Source>
      <RequestorID Type="22" ID="TrustCRS"/>
      <!-- code 22 = Electronic reservation service provider -->
    </Source>
  </POS>
  <HotelReservations>
    <HotelReservation CreateDateTime="2014-10-09T08:51:45" CreatorID="FLAUA"
LastModifierID="AMR">
      <UniqueID Type="14" ID="3741"/>
      <RoomStays>
        <RoomStay>
          <BasicPropertyInfo HotelCode="HXCAIZZ" ChainCode="HX" BrandCode="TC"/>
        </RoomStay>
      </RoomStays>
      <ResGlobalInfo>
        <HotelReservationIDs>
          <HotelReservationID ResID_Type="10" ResID_Value="82329987"
ResID_Source="FDesk System"/>
          <HotelReservationID ResID_Type="15" ResID_Value="CXLMPW96E"
ResID_Source="TrustCRS"/>
        </HotelReservationIDs>
      </ResGlobalInfo>
    </HotelReservation>
  </HotelReservations>

```

```
</OTA_HotelResNotifRQ>
```

3.2.4.2 Sample Response

```
<OTA_HotelResNotifRS xmlns="http://www.opentravel.org/OTA/2003/05"
EchoToken="879791950" TimeStamp="2014-10-09T20:52:02-05:00" Version="1.001"
ResResponseType="Cancelled">
  <Success/>
  <HotelReservations>
    <HotelReservation>
      <UniqueID Type="14" ID="3741"/>
      <ResGlobalInfo>
        <HotelReservationIDs>
          <!-- code 15 = Cancellation -->
          <HotelReservationID ResID_Type="15" ResID_Value="CXLMPW96E"
ResID_Source="TrustCRSx"/>
          <HotelReservationID ResID_Type="10" ResID_Value="82329987"
ResID_Source="FDesk System"/>
          <HotelReservationID ResID_Type="15" ResID_Value="123456789CXL"
ResID_Source="FDesk System"/>
        </HotelReservationIDs>
      </ResGlobalInfo>
    </HotelReservation>
  </HotelReservations>
</OTA_HotelResNotifRS>
```

3.3 Get Pending Reservations

3.3.1 Overview

The Get Pending Reservations message is to be used to search for pending reservations and retrieve their details based on a set of previously agreed upon query parameters.

3.3.2 Roles

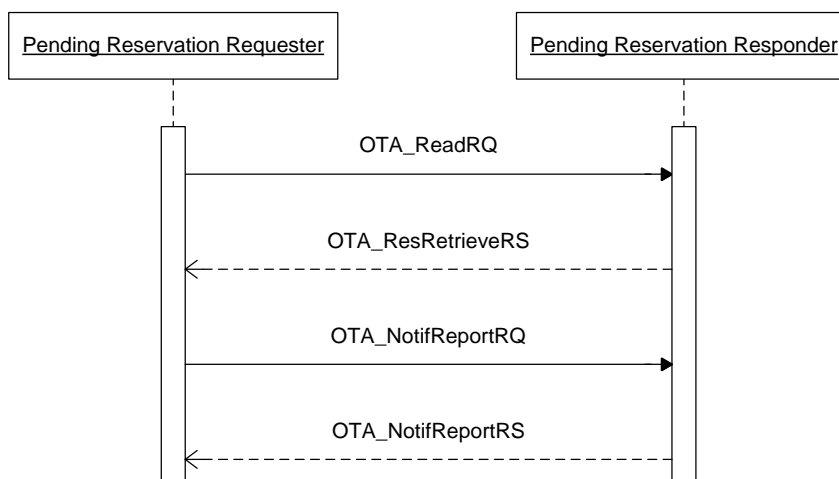
Role Name	Definition	Examples
Pending Reservation Requester	A system that has the need to obtain pending reservation information.	<ul style="list-style-type: none"> Central Reservation System Property Management System Channel Management System Online Travel Agent
Pending Reservation Responder	A system that maintains pending reservation information.	<ul style="list-style-type: none"> Central Reservation System Property Management System Channel Management System

3.3.3 Use Case

Assumption:	Pending Reservation Requester and Pending Reservation Responder have agreed which attributes will be transmitted and accepted.
Pre-condition:	None
Trigger:	The Pending Reservation Requester, through event or manual action, has determined that it must obtain reservations from the Pending Reservation Responder.

Basic Course of Events:	<ol style="list-style-type: none"> 1. Pending Reservation Requester constructs OTA_ReadRQ with the appropriate query parameters. 2. Pending Reservation Requester successfully transmits message payload. 3. Pending Reservation Responder receives the message payload. 4. Pending Reservation Responder processes OTA_ReadRQ. 5. Pending Reservation Responder returns the reservation information appropriate to the query parameters, using OTA_ResRetrieveRS.
Post-condition:	Pending Reservation Requester may update their database to log what was last successfully processed.
Exception Path:	None
Alternative Path:	None

3.3.4 Message Flows



3.3.5 Pull Pending Reservation

3.3.5.1 Request for undelivered reservations using OTA_ReadRQ message

```

<OTA_ReadRQ xmlns="http://www.opentravel.org/OTA/2003/05" TimeStamp="2015-03-29T09:30:47.0Z" version="1">
  <ReadRequests>
    <HotelReadRequest HotelCode="123" HotelName="Test Hotel" ChainCode="321">
      <SelectionCriteria SelectionType="Undelivered" />
    </HotelReadRequest>
  </ReadRequests>
</OTA_ReadRQ>
  
```

3.3.5.2 Reservation Responder returns list of undelivered reservations to the Requester using OTA_ResRetrieveRS message

```

<OTA_ResRetrieveRS xmlns="http://www.opentravel.org/OTA/2003/05" version="1" TimeStamp="2015-03-29T09:30:58.0Z">
  
```

```

<Success/>
<ReservationsList>
  <HotelReservation CreateDateTime="2014-12-09T08:51:45" CreatorID="Syn"
LastModifierID="Syn" LastModifyDateTime="2014-12-09T08:51:45" ResStatus="Book">
    <UniqueID Type="14" ID="10107SY3741"/>
    <!-- code 14 = Reservation -->
    <RoomStays>
      <RoomStay>
        <RoomRates>
          <RoomRate RoomTypeCode="KB" RatePlanCode="RAC" NumberOfUnits="1">
            <Rates>
              <Rate UnitMultiplier="1" RateTimeUnit="Day" EffectiveDate="2014-11-12"
ExpireDate="2014-11-15">
                <Base AmountAfterTax="100.00" CurrencyCode="USD"/>
              </Rate>
            </Rates>
          </RoomRate>
        </RoomRates>
        <GuestCounts IsPerRoom="1">
          <GuestCount AgeQualifyingCode="10" Count="2"/>
          <!-- code 10 = Adult-->
          <GuestCount AgeQualifyingCode="8" Count="1"/>
          <!-- code 8 = Child-->
        </GuestCounts>
        <TimeSpan End="2014-11-15" Start="2014-11-12"/>
        <Guarantee GuaranteeType="GuaranteeRequired" GuaranteeCode="GCC">
          <GuaranteesAccepted>
            <GuaranteeAccepted>
              <PaymentCard SecureInd="true" CardCode="VS" ExpireDate="0615"
SeriesCode="123">
                <CardHolderName>James Bond</CardHolderName>
                <CardNumber Token="4321432143214327" TokenProvider="SDP8267"
MaskedCardNumber="XXXXXXXXXXXX4327"/>
              </PaymentCard>
            </GuaranteeAccepted>
          </GuaranteesAccepted>
          <GuaranteeDescription>
            <Text>Guarantee by cc</Text>
          </GuaranteeDescription>
        </Guarantee>
        <Total AmountAfterTax="300.00" CurrencyCode="USD"/>
        <BasicPropertyInfo HotelCode="10107" ChainCode="6835"/>
        <ResGuestRPHs>
          <ResGuestRPH RPH="1"/>
        </ResGuestRPHs>
      </RoomStay>
    </RoomStays>
    <ResGuests>
      <ResGuest ResGuestRPH="1" PrimaryIndicator="1">
        <Profiles>
          <ProfileInfo>
            <UniqueID Type="1" ID="12345" ID_Context="HotelLoyaltyProgram"/>
            <!-- code 1 = Customer-->
            <Profile ProfileType="1">
              <!--code 1 = Customer-->
              <Customer>
                <PersonName>
                  <NamePrefix>Mr</NamePrefix>
                  <GivenName>James</GivenName>
                  <MiddleName>Arthur</MiddleName>
                  <Surname>Bond</Surname>
                </PersonName>
                <Telephone FormattedInd="1" DefaultInd="1" PhoneNumber="44-69-
66564100" PhoneTechType="1" PhoneLocationType="7"/>
                <!-- PhoneTechType 1 = Voice, PhoneLocationType 7 = Office, -->
                <Telephone FormattedInd="1" DefaultInd="0" PhoneNumber="44-69-
66564101" PhoneTechType="3" PhoneLocationType="7"/>
                <!-- PhoneTechType 3 = Fax, PhoneLocationType 7 = Office, -->
                <Email EmailType="2">james.bond@mi5.co.uk</Email>
                <!--code 2 = Business -->
                <Address Type="1">

```

```

        <!--code 1 = Home -->
        <AddressLine>Claretta House</AddressLine>
        <AddressLine>Tower Bridge Close</AddressLine>
        <CityName>London</CityName>
        <PostalCode>EC1 2PG</PostalCode>
        <StateProv StateCode="ENG"/>
        <CountryName Code="UK"/>
    </Address>
    <CustLoyalty ProgramID="FrequentGuest" MembershipID="12345"/>
</Customer>
</Profile>
</ProfileInfo>
</Profiles>
</ResGuest>
</ResGuests>
<ResGlobalInfo>
    <HotelReservationIDs>
        <HotelReservationID ResID_Type="14" ResID_Value="10107SY3741" ForGuest="1"/>
        <!--code 14 = reservation-->
    </HotelReservationIDs>
</ResGlobalInfo>
</HotelReservation>
</ReservationsList>
</OTA_ResRetrieveRS>

```

Reservation Requester loops through the HotelReservations collection and successfully processes each HotelReservation.

Alternatively, if the Reservation Responder has no pending reservations, the following response will be sent:

```

<OTA_ResRetrieveRS xmlns="http://www.opentravel.org/OTA/2003/05" version="1"
TimeStamp="2015-03-29T09:30:58.0Z">
    <Success/>
    <Warnings>
        <Warning Type="3" Code="284">No reservations found for search criteria</warning>
    </Warnings>
    <ReservationsList/>
</OTA_ResRetrieveRS>

```

3.3.5.3 Reservation Requester sends an OTA NotifReportRQ to the Reservation Responder, indicating the processing status for each reservation

```

<OTA_NotifReportRQ xmlns="http://www.opentravel.org/OTA/2003/05" TimeStamp="2015-03-
29T09:51:45" Version="1">
    <Success/>
    <NotifDetails>
        <HotelNotifReport>
            <HotelReservations>
                <HotelReservation CreateDateTime="2014-12-09T08:51:45" CreatorID="Syn"
LastModifierID="Syn" LastModifyDateTime="2015-03-29T09:51:45">
                    <UniqueID Type="14" ID="10107SY3741"/>
                    <!-- code 14 = Reservation -->
                    <ResGlobalInfo>
                        <HotelReservationIDs>
                            <HotelReservationID ResID_Type="10" ResID_Value="82329987"/>
                            <!-- Res ID Type 10 = Hotel from OpenTravel Alliance code table UIT -->
                        </HotelReservationIDs>
                    </ResGlobalInfo>
                </HotelReservation>
            </HotelReservations>
        </HotelNotifReport>
    </NotifDetails>
</OTA_NotifReportRQ>

```

If Reservation Requester was not able to successfully process message, the appropriate OpenTravel error code would be sent instead of the success.

3.3.5.4 Reservation Responder responds with an OTA NotifReportRS

```
<OTA_NotifReportRS xmlns="http://www.opentravel.org/OTA/2003/05" Timestamp="2015-03-29T09:51:45" Version="1">  
  <Success/>  
</OTA_NotifReportRQ>
```


4 Messages

Please note that conditionally mandatory items (outlined in the above use cases) are marked with an asterisk (*).

4.1 Book or Change Reservation

4.1.1 Data Element Table – Book Reservation Request

Element @Attribute	Num	Description/Contents
OTA_HotelResNotifRQ	1	Root element of the message.
@EchoToken	0..1	As per OpenTravel Alliance Specifications.
@ResStatus	1	Of all the enumerations listed by OpenTravel Alliance: <ul style="list-style-type: none"> • “Commit” for new reservations • “Modify” changes to existing reservations.
@Version	1	Version is a mandatory attribute in OpenTravel Alliance; therefore, it must remain Mandatory in HTNG in order to be able to use the same message.
@TimeStamp	1	Time of the transaction.
OTA_HotelResNotifRQ / POS / Source / RequestorID	1	This identifies the system that is sending the reservation.
@Type	1	Type attribute uses the OpenTravel Alliance code list UIT and ID is used for the name or ID of the requestor. For example, type 22 – ERSP (Electronic reservation service provider) and ID: TrustCRS.
@ID	1	The ID used will be agreed by the trading partners and remain the same throughout the messages.
OTA_HotelResNotifRQ / POS / Source / BookingChannel	1..2	This element is used to pass the booking source for the reservation. To send secondary booking channel information an additional Source element needs to be sent.
@Type	1	Type is mandatory in OpenTravel Alliance and indicates the type of booking channel. Refers to OpenTravel Alliance code list BCT (Booking Channel Type): <ul style="list-style-type: none"> 1 Global distribution system (GDS) 2 Alternative distribution system (ADS) 3 Sales and catering system (SCS) 4 Property management system (PMS) 5 Central reservation system (CRS) 6 Tour operator system (TOS) 7 Internet

Element @Attribute	Num	Description/Contents
@Primary	1	Primary attribute would be set to "true" if only one booking channel is transferred. Only one source should be marked "true" if multiple sources are sent.
OTA_HotelResNotifRQ / POS / Source / BookingChannel / CompanyName	0	The name of the booking source.
@Code	0..1	Code is Optional and can be used to transfer the code of the Booking channel if such code is a recognized industry standard – the name, however, should always be sent as well as the code.
OTA_HotelResNotifRQ / HotelReservations / HotelReservation	1	Must be sent for the message to have a meaning.
@CreatorID	1	The CreatorID is the identifier of the user or, in its absence, the office that originated the reservation.
@CreateDateTime	1	This is the date when the reservation was first made.
@LastModifiedDateTime	0..1	This indicates the last date and time when the reservation was modified. MANDATORY if the ResStatus is "Modify".
@LastModifierID	0..1	This indicates the last user who modified the reservation.
@ResStatus	0..1	<p>Indicates the current status of the reservation.</p> <p>Valid values are dependant on the roles:</p> <p>Reservation Broker → Reservation Server</p> <ul style="list-style-type: none"> • Reserved • Waitlisted <p>Reservation Server → Reservation Broker</p> <ul style="list-style-type: none"> • Reserved • Waitlisted • No-show • In-house • Checked-Out

Element @Attribute	Num	Description/Contents
OTA_HotelResNotifRQ / HotelReservations / HotelReservation / UniqueID	1	The unique ID depends on the system generating the booking; i.e., if the booking is generated by the PMS this field would contain the PMS confirmation number; if the system is a CRS, the CRS confirmation number. The Unique ID generated by the system originating the booking must be carried through to the final receiver of the booking (generally the PMS) to ensure that the client can use the same confirmation number whether he/she deals with the web site originating the booking or the central reservation office of the hotel or the property itself.
@Type	1	Type is assigned codes from the UIT (Unique ID Type) code list. If the originator is a CRS, the recommended value for this message is 14 – Reservation. If the originator is a PMS, the recommended value for this message would be 10 – Hotel.
@ID	1	ID is the actual confirmation number.
OTA_HotelResNotifRQ / HotelReservations / HotelReservation / RoomStays / RoomStay	1	Only one instance of RoomStay is allowed,
@MarketCode	0..1	This is the code that relates to the market being sold and may be needed by the PMS for tracking purposes.
@SourceOfBusiness	0..1	Used to specify where the business came from; e.g., radio, newspaper ad, or it could be a referring property.
@PromotionCode	0..1	This is the promotion code indicating, for instance, a specific marketing campaign – not the rate code.
OTA_HotelResNotifRQ / HotelReservations / HotelReservation / RoomStays / RoomStay / RatePlans /	0..1	The RatePlans element is not required but can be sent to give further details on the rates booked in this reservation.
OTA_HotelResNotifRQ / HotelReservations / HotelReservation / RoomStays / RoomStay / RatePlans / RatePlan	1	The RatePlan to be booked.
@RatePlanCode	1	This is the code of the rate booked.
OTA_HotelResNotifRQ / HotelReservations / HotelReservation / RoomStays / RoomStay / RatePlans / RatePlan / RatePlanInclusions	1	Defines charges that are included in this rate plan.

Element @Attribute	Num	Description/Contents
@TaxInclusive	1	Boolean. Defines if the rate booked is tax inclusive or not.
OTA_HotelResNotifRQ / HotelReservations / HotelReservation / RoomStays / RoomStay / RatePlans / RatePlan / MealsIncluded	0..1	Defines which meals are included with this rate program.
@MealPlanIndicator	1	Boolean. If the meal plan is included in the rate value, this value must be set to true. If this value is false, then MealPlanCodes must be blank.
@MealPlanCodes	1	Comma separated string of OpenTravel Alliance meal plan codes (MPT) that apply to the reservation. Although multiple meal plans are allowed, those systems handling only a single meal plan should use the first value in the string. A blank string indicates the removal of any meal plan codes that may already exist.
OTA_HotelResNotifRQ / HotelReservations / HotelReservation / RoomStays / RoomStay / RoomRates / RoomRate	1..n	One instance of RoomRate per room/rate booked. If more than one Rate plan can be booked in one reservation the entire RoomRate element must be repeated for each Room/rate combination. In addition, all RoomRate elements MUST share the same RoomTypeCode.
@RatePlanCategory	0..1	This is the category or segment to which the rate being booked belongs.
@RoomTypeCode	1	This is the room type code booked in the reservation.
@InvBlockCode	0..1	If the room booked is part of a block, the block code or suitable default string agreed by the implementing partners should be transferred in this field.
@NumberOfUnits	1	This is the number of rooms booked for the room type code listed in the RoomTypeCode attribute. In the case of shared reservations, this value will always be "1".
@RatePlanCode	1	This is the rate booked for the room type code listed in the RoomTypeCode attribute.
OTA_HotelResNotifRQ / HotelReservations / HotelReservation / RoomRates / RoomRate / Rates / Rate	1..n	At least one instance of Rate per Rate plan. Multiple instances of the Rate element must be sent if rate changes apply to the booking.
@RateTimeUnit	1	Rate Time unit is an Enumeration of time units upon which the rate amount is based (e.g., daily, weekly, single rate for full stay).

Element @Attribute	Num	Description/Contents
@EffectiveDate	1	The Effective date attribute indicates the starting date of when a specific rate value is applied. This is needed when during the stay there are some rate changes and therefore one instance of when the Base element applies to part of the stay and another instance of when the Base element applies to another part of the stay. The effective date here refers to the Base that is passed in this instance of Rate element.
@ExpireDate	1	The Expire date indicates the day when the specific value of the rate is changed to another value.
@UnitMultiplier	1	UnitMultiplier is the number of RateTimeUnits that the rate amount is based upon (e.g., rate for one day in case of nightly rates).
OTA_HotelResNotifRQ / HotelReservations / HotelReservation / RoomRates / RoomRate / Rates / Rate / Base	1	Mandatory in both OpenTravel Alliance and HTNG if an instance of RoomRate is passed.
@CurrencyCode	1	CurrencyCode used ISO 4217 codes to indicate the currency of the rate that is being booked.
@AmountBeforeTax	0	AmountBeforeTax if available can be sent for each @NumberOfGuests.
@AmountAfterTax	1	AmountAfterTax is Mandatory for each @NumberOfGuests.
OTA_HotelResNotifRQ / HotelReservations / HotelReservation / RoomStays / RoomStay / RoomRates / RoomRate / Rates / Rate / Base / Taxes	0..1	A collection of taxes.
@Amount	0..1	Total Amount of Taxes applied to the booking.
@CurrencyCode	0..1	Currency of the total Amount of Taxes.
OTA_HotelResNotifRQ / HotelReservations / HotelReservation / RoomStays / RoomStay / RoomRates / RoomRate / Rates / Rate / Base / Taxes / Tax	1..99	An individual tax.
@Type	0..1	The Type attribute is an enumeration to indicate whether the tax is “inclusive”, “exclusive” or “cumulative”.
@Code	0..1	The Code attribute refers to OpenTravel Alliance list FTT (fee tax type) and is used to indicate the specific tax or fee that is being transferred.

Element @Attribute	Num	Description/Contents
@Amount	0..1	Amount of the specific tax/fee transferred.
@CurrencyCode	0..1	Currency for the Amount of the specific tax/fee transferred.
OTA_HotelResNotifRQ / HotelReservations / HotelReservation / RoomStays / RoomStay / GuestCounts	1	Contains the guest counts of the booking.
@IsPerRoom	0..1	Indicates that the guest count provided is on a per room basis.
OTA_HotelResNotifRQ / HotelReservations / HotelReservation / RoomStays / RoomStay / GuestCounts / GuestCount	1..n	Contains the type and number of guests included in the reservation.
@AgeQualifyingCode	1	The two codes used from the OpenTravel Alliance AQC code list are: 8-Child, 10-Adult.
@Count	1	Count will include the number and will be repeated for each Type of guest.
@AgeBucket	0..1	This value may be included to identify the age bucket that the GuestCount corresponds to. If this is included, count will indicate the number of guests for this age bucket.
@Age	0..1	Defines the age of a guest.
OTA_HotelResNotifRQ / HotelReservations / HotelReservation / RoomStays / RoomStay / TimeSpan	1	These are the in and out dates of the booking.
@Start	1	Check in date.
@End	1	Check out date.
OTA_HotelResNotifRQ / HotelReservations / HotelReservation / RoomStays / RoomStay / Guarantee	0..5	Guarantee provided with the reservation.

Element @Attribute	Num	Description/Contents
@GuaranteeType	1	This is the attribute that indicates what guarantee is provided with the reservation. The enumerated values can be: "GuaranteeRequired" "None" "CC / DC / Voucher" "Profile" "Deposit" "PrePay"
@GuaranteeCode	0..1	This is the guarantee code used in the CRS.
OTA_HotelResNotifRQ / HotelReservations / HotelReservation / RoomStays / RoomStay / Guarantee / GuaranteesAccepted / GuaranteeAccepted / PaymentCard	1	Details of a debit or credit card.
@SecureInd	0..1	Secure data indicator.
@CardCode	0..1	The Card code is the 2-letter code indicative of the card (VS, MC, AX, etc.).
@ExpireDate	0..1	Mandatory if credit card guarantee info is passed. This is the expiry date of the credit card used as guarantee.
@SeriesCode	0..1	The SeriesCode attribute is used (Optionally) for the security number of the card.
OTA_HotelResNotifRQ / HotelReservations / HotelReservation / RoomStays / RoomStay / Guarantee / GuaranteesAccepted / GuaranteeAccepted / PaymentCard / CardHolderName	0..1	Mandatory if credit card guarantee info is passed. This is the name of the card holder. If the system transmitting the info does not hold the cc holder name, it should not be passed rather than passing incorrect details.
OTA_HotelResNotifRQ / HotelReservations / HotelReservation / RoomStays / RoomStay / Guarantee / GuaranteesAccepted / GuaranteeAccepted / PaymentCard / CardNumber	0..1	Credit card number embossed on the card.
@Token	0..1	Tokenized information.
@TokenProviderID	0..1	Provider ID.
@Mask	0..1	Masked data.

Element @Attribute	Num	Description/Contents
OTA_HotelResNotifRQ / HotelReservations / HotelReservation / RoomStays / RoomStay / Guarantee / GuaranteeDescription / Text	0..1	Optional. This can be used to pass the details of the guarantee if the guarantee used is not cc or deposit.
@Name	0..1	Used in conjunction with Text element above. Name could be used to indicate Voucher and the Text could be used to indicate the voucher number, for instance.
OTA_HotelResNotifRQ / HotelReservations / HotelReservation / RoomStays / RoomStay / DepositPayments / GuaranteePayment / AcceptedPayments / AcceptedPayment	0..n	Used if deposit or prepayment information is transferred with the booking. All fields below this path are only Mandatory IF the element is used at all.
@PaymentTransactionTypeCode	1	Mandatory if anything is passed in the AcceptedPayment element. This is an enumeration that indicates whether we are talking about a deposit or a prepayment. The two options are: charge (prepayment) or reserve (deposit). Would be Optional in the schema.
OTA_HotelResNotifRQ / HotelReservations / HotelReservation / RoomStays / RoomStay / DepositPayments / GuaranteePayment / AcceptedPayments / AcceptedPayment / PaymentCard	1	Mandatory if an instance of AcceptedPayment is passed and no other sub-element is used. This is the card to which the deposit or prepayment for the booking must be charged.
@SecureInd	0..1	Secure data indicator.
@CardCode	0..1	The Card code is the 2-letter code indicative of the card (VS, MC, AX, etc.).
@ExpireDate	0..1	Mandatory if credit card guarantee info is passed. This is the expiry date of the credit card used as guarantee.
@SeriesCode	0..1	The SeriesCode attribute is used (Optionally) for the security number of the card.
OTA_HotelResNotifRQ / HotelReservations / HotelReservation / RoomStays / RoomStay / DepositPayments / GuaranteePayment / AcceptedPayments / AcceptedPayment / PaymentCard / CardHolderName	0..1	Mandatory if credit card guarantee info is passed. This is the name of the card holder. If the system transmitting the info does not hold the cc holder name, it should not be passed rather than passing incorrect details.

Element @Attribute	Num	Description/Contents
OTA_HotelResNotifRQ / HotelReservations / HotelReservation / RoomStays / RoomStay / DepositPayments / GuaranteePayment / AcceptedPayments / AcceptedPayment / PaymentCard / CardNumber	0..1	Credit card number embossed on the card.
@Token	0..1	Tokenized information.
@TokenProvider	0..1	Provider ID.
@MaskedCardNumber	0..1	Masked data.
OTA_HotelResNotifRQ / HotelReservations / HotelReservation / RoomStays / RoomStay / DepositPayments / GuaranteePayment / AmountPercent	1	Mandatory if something is passed in the DepositPayment element. In this case, the amount must be specified.
@Amount	0..1	This is the amount charged as a deposit for the booking. At least one between Amount, Percent, and NumberOfNights must be transferred.
@CurrencyCode	0..1	Currency used. Should be sent in conjunction with Amount.
@Percent	0..1	This is the percentage charged as a deposit for the booking. At least one between Amount, Percent and NumberOfNights must be transferred.
@NumberOfNights	0..1	This is the Number of nights charged as a deposit for the booking. At least one between Amount, Percent and NumberOfNights must be transferred.
OTA_HotelResNotifRQ / HotelReservations / HotelReservation / RoomStays / RoomStay / DepositPayments / GuaranteePayment / Deadline	0..1	Indicates when the deposit is due if not at the time of booking.
@AbsoluteDeadline	0..1	Used as per OpenTravel Alliance schema.
@OffsetTimeUnit	0..1	Used as per OpenTravel Alliance schema.
@OffsetUnitMultiplier	0..1	Used as per OpenTravel Alliance schema.
@OffsetDropTime	0..1	Used as per OpenTravel Alliance schema.

Element @Attribute	Num	Description/Contents
OTA_HotelResNotifRQ / HotelReservations / HotelReservation / RoomStays / RoomStay / DepositPayments / GuaranteePayment / AcceptedPayments / AcceptedPayment / DirectBill	1	Mandatory if an instance of AcceptedPayment is passed and no other sub-element is used. This is the direct bill information for the booking.
@DirectBillID	0..1	Identifier for the organization to be billed directly for travel services.
OTA_HotelResNotifRQ / HotelReservations / HotelReservation / RoomStays / RoomStay / DepositPayments / GuaranteePayment / AcceptedPayments / AcceptedPayment / Voucher	1	Mandatory if an instance of AcceptedPayment is passed and no other sub-element is used. This is the voucher information for the booking.
@SeriesCode	0..1	A series of coupons or vouchers identified by serial number(s).
OTA_HotelResNotifRQ / HotelReservations / HotelReservation / RoomStays / RoomStay / Total	0..1	This is the total amount for the stay.
@CurrencyCode	1	CurrencyCode used ISO 4217 codes to indicate the currency of the total rate.
@AmountBeforeTax OR @AmountAfterTax	1	Either @AmountBeforeTax or AmountAfterTax is Mandatory for each @NumberOfGuests. Partners must select whether to send either the @AmountBeforeTax or @AmountAfterTax (or both) attributes.
OTA_HotelResNotifRQ / HotelReservations / HotelReservation / RoomStays / RoomStay / Total / Taxes	0..1	Optional. Can be used for Total Pricing.
@Amount	0..1	Total Amount of Taxes applied to the booking.
@CurrencyCode	0..1	Currency of the total Amount of Taxes.
OTA_HotelResNotifRQ / HotelReservations / HotelReservation / RoomStays / RoomStay / Total / Taxes / Tax	0..99	Optional. Can be used for Total Pricing.
@Type	0..1	The Type attribute is an enumeration to indicate whether the tax is "inclusive", "exclusive" or "cumulative".

Element @Attribute	Num	Description/Contents
@Code	0..1	The Code attribute refers to OpenTravel Alliance list FTT (fee tax type) and is used to indicate the specific tax or fee that is being transferred.
@Amount	0..1	Amount of the specific tax/fee transferred.
@CurrencyCode	0..1	Currency for the Amount of the specific tax/fee transferred.
OTA_HotelResNotifRQ / HotelReservations / HotelReservation / RoomStays / RoomStay / BasicPropertyInfo	1	Property Information for the Room Stay.
@HotelCode	1	This is the property for which the reservations are being transferred.
@ChainCode	0..1	ChainCode indicates the chain to which the property belongs.
@BrandCode	0..1	BrandCode indicates the Brand within the Chain to which the property belongs.
OTA_HotelResNotifRQ / HotelReservations / HotelReservation / RoomStays / RoomStay / ResGuestRPHs / ResGuestRPH /	1..n	A reference placeholder used as an index identifying which guests occupy this room.
@RPH	1	This is used to link the various profiles to the reservation.
OTA_HotelResNotifRQ / HotelReservations / HotelReservation / RoomStays / RoomStay / Memberships / Membership	0..n	The element Membership is Optional but both attributes would need to be Mandatory.
@ProgramCode	1	The loyalty program to which the account ID belongs.
@AccountID	1	The account that needs to be credited with points for the stay booked.
OTA_HotelResNotifRQ / HotelReservations / HotelReservation / RoomStays / RoomStay / Comments / Comment	1	Comment details.
@Name	0..1	Allows types of Comments to be differentiated. Valid values would be determined by Trader-Partners.

Element @Attribute	Num	Description/Contents
@GuestViewable	0	This indicates that the comment can actually be seen by the guest and is necessary when two different types of comments are passed: one that is guest viewable and one that isn't. The Attribute is of Boolean nature.
OTA_HotelResNotifRQ / HotelReservations / HotelReservation / RoomStays / RoomStay / Comments / Comment / Text	1	Comments.
OTA_HotelResNotifRQ / HotelReservations / HotelReservation / RoomStays / RoomStay / SpecialRequests / SpecialRequest /	0..n	The SpecialRequest object indicates special requests for a particular guest, service or reservation. Each of these may be independent of any that are tied to the profile.
@RequestCode	1	Indicates the special requests associated with the reservation. If a special request is passed it must be passed with the RequestCode attribute, which is therefore conditionally Mandatory. If no code is available the partners should agree on a code to be transferred in conjunction with the TEXT element below.
@CodeContext	0..1	If the system sending the information differentiates the request codes in various groups (for instance, room features <i>versus</i> special requests, etc.), the context of the code should be sent to indicate whether the request sent is indeed a room feature or a special request or belongs to any other grouping – must be agreed upon implementing partners based on the functionality of the systems involved.
OTA_HotelResNotifRQ / HotelReservations / HotelReservation / RoomStays / RoomStay / SpecialRequests / SpecialRequest / Text	0..1	Provides more information about the request code or provides description for requests that are yet uncoded.
OTA_HotelResNotifRQ / HotelReservations / HotelReservation / BillingInstructionCode	0..n	Billing codes that apply to a set of instructions for a set of transactions that are routed to a designated folio.
OTA_HotelResNotifRQ / HotelReservations / HotelReservation / BillingInstructionCode / BillingCode	1	The individual billing code that applies to a set of instructions that are routed to a designated folio.

Element @Attribute	Num	Description/Contents
OTA_HotelResNotifRQ / HotelReservations / HotelReservation / BillingInstructionCode / BillingType	0..1	Used to define the type of the BillingCode, such as group, corporate and casino. Refer to OpenTravel Code List Reservation Billing Type (RBT).
OTA_HotelResNotifRQ / HotelReservations / HotelReservation / BillingInstructionCode / AuthorizationCode	0..1	The authorization code associated with the billing code.
OTA_HotelResNotifRQ / HotelReservations / HotelReservation / BillingInstructionCode / Description	0..1	A short description of the billing code or instructions.
OTA_HotelResNotifRQ / HotelReservations / HotelReservation / BillingInstructionCode / Start	0..1	The starting value of the time span.
OTA_HotelResNotifRQ / HotelReservations / HotelReservation / BillingInstructionCode / End	0..1	The ending value of the time span.
OTA_HotelResNotifRQ / HotelReservations / HotelReservation / BillingInstructionCode / AccountNumber	0..1	Identifies the account number where the charges will be routed.
OTA_HotelResNotifRQ / HotelReservations / HotelReservation / BillingInstructionCode / ResGuestRPH	0..n	A reference to a guest ID object that may be defined in ResGuests/ResGuest
@RPH	1	A unique reference to the guest ID.
OTA_HotelResNotifRQ / HotelReservations / HotelReservation / ResGuests / ResGuest /	1..n	The ResGuest object contains the information about a guest associated with a reservation.

Element @Attribute	Num	Description/Contents
@ResGuestRPH	1	For simple reservations: If profiles for guest, travel agency and company are available, they would all be linked to a single ResGuestRPH. A comment has been entered with OpenTravel Alliance for phase 2 to accommodate more complex scenarios.
@PrimaryIndicator	0..1	New attribute in OpenTravel Alliance 2007A. This indicates the primary guest on a reservation. In the case of multiple guests on a reservation, the guest responsible for payment, etc. will be marked true. Currently Optional in OpenTravel Alliance schema but needs to be Mandatory to support passing of multiple guests on a reservation (Additional Profile).
OTA_HotelResNotifRQ / HotelReservations / HotelReservation / ResGuests / ResGuest / Profiles / ProfileInfo / UniqueID	0..9	Used to allow additional IDs for matching purposes.
@Type	1	The Type attribute refers to OpenTravel Alliance code type UIT and the choices recommended by HTNG should be: 1 - Customer 4 - Company 5 -Travel Agency
@ID	1	The actual ID.
@ID_Context	0..1	ID_Context is Optional and would be used to identify the source of the ID (for instance, for a Travel agency ID we could have IATA or ABTA, etc.).
OTA_HotelResNotifRQ / HotelReservations / HotelReservation / ResGuests / ResGuest / Profiles / ProfileInfo / UniqueID / CompanyName	0..1	Further identifier.
@CodeContext	1	Identifies the context of the identifying code, such as DUNS, IATA or internal code, etc.
@Code	1	Identifies a company by the company code.
OTA_HotelResNotifRQ / HotelReservations / HotelReservation / ResGuests / ResGuest / Profiles / ProfileInfo / Profile	1..n	Provides detailed information regarding either a company or a customer profile.

Element @Attribute	Num	Description/Contents
@ProfileType	1	This is used to pass the profile info for the guest, the Company and the Travel agency. For the individual guest the code used in ProfileType is the OpenTravel Alliance PRT code 1-[Customer], For a company it is PRT Code - 3 [Corporation]. For a travel agency it is PRT code 4 - [Travel agent].
@ShareAllOptOutInd	0..1	When yes, a customer has explicitly opted out of marketing communication. This is used in combination with the ShareAllMarketInd and only one of these attributes should have a value of yes.
@ShareAllMarketInd	0..1	Permission for sharing all data in profile for marketing purposes. A yes value indicates that the customer has chosen to opt-in to marketing communication. This is used in combination with the ShareAllOptOutInd and only one of these attributes should have a value of yes.
OTA_HotelResNotifRQ / HotelReservations / HotelReservation / ResGuests / ResGuest / Profiles / ProfileInfo / Profile / Customer	1	Customer.
@VIP_Indicator	0..1	If true, indicates a very important person.
@Birthdate	0..1	The customer's birthday information.
OTA_HotelResNotifRQ / HotelReservations / HotelReservation / ResGuests / ResGuest / Profiles / ProfileInfo / Profile / Customer / PersonName	0..5	Detailed name information for the customer.
@Language	0..1	The language code for which the name data is represented. While this value is optional, it is HIGHLY RECOMMENDED that it be used.
@NameType	0..1	Former, Nickname, Alternate, etc.
OTA_HotelResNotifRQ / HotelReservations / HotelReservation / ResGuests / ResGuest / Profiles / ProfileInfo / Profile / Customer / PersonName / NamePrefix	0..1	Optional but should be highly recommended by HTNG that partners use it if possible. This path is used to transmit the Customer details. Details of the company or Travel agency use a different path. This field would be used to pass the guest's name Prefix.

Element @Attribute	Num	Description/Contents
OTA_HotelResNotifRQ / HotelReservations / HotelReservation / ResGuests / ResGuest / Profiles / ProfileInfo / Profile / Customer / PersonName / GivenName	0..1	Optional. This path is used to transmit the Customer details. Details of the company or Travel agency use a different path. This field would be used to pass the guest's First name.
OTA_HotelResNotifRQ / HotelReservations / HotelReservation / ResGuests / ResGuest / Profiles / ProfileInfo / Profile / Customer / PersonName / MiddleName	0..1	Optional. This path is used to transmit the Customer details. Details of the company or Travel agency use a different path. This field would be used to pass the guest's Middle name.
OTA_HotelResNotifRQ / HotelReservations / HotelReservation / ResGuests / ResGuest / Profiles / ProfileInfo / Profile / Customer / PersonName / Surname	1	Mandatory if a guest profile is passed. This path is used to transmit the Customer details. Details of the company or Travel agency use a different path. This field would be used to pass the guest's Surname.
OTA_HotelResNotifRQ / HotelReservations / HotelReservation / ResGuests / ResGuest / Profiles / ProfileInfo / Profile / Customer / PersonName / NameSuffix	0..1	Optional. This field would be used to pass the guest's suffix.
OTA_HotelResNotifRQ / HotelReservations / HotelReservation / ResGuests / ResGuest / Profiles / ProfileInfo / Profile / Customer / Telephone	1..n	Mandatory if a guest profile is passed. This path is used to transmit the Customer details. Details of the company or Travel agency use a different path. This field would be used to pass the guest's phone numbers and fax number.
@PhoneLocationType	0..1	The PhoneLocationType attribute refers to the OpenTravel Alliance PLT code list and indicates where the phone number is based – the values to be used by HTNG are: 6 – Home, 7 – Office, 8 – Other (e.g., cell phone).
@PhoneTechType	0..1	The PhoneTechType attribute refers to the OpenTravel Alliance PTT code list and indicates which type of number is transmitted (phone <i>versus</i> fax). The codes to be used by HTNG are: code 1 – Voice code 3 – Fax code 5 – Mobile
@Phone Number	1	PhoneNumber contains the actual number as a string of max 32 characters and it is Mandatory.

Element @Attribute	Num	Description/Contents
@CountryAccessCode	0..1	Code assigned by telecommunications authorities for international country access identifier.
@Area City Code	0..1	Code assigned for telephones in a specific region, city or area.
@FormattedInd	1	FormattedInd is Mandatory. If the partner can use Country and Area codes then it should be set to NO. If country code and area code are passed then they should not appear again in the PhoneNumber field. If the partner cannot use country and area code then entire number is passed in the PhoneNumber field and FormattedInd. It should be set to YES if the number needs to be parsed as there is a separation of the different parts or set to NO to indicate that the PhoneNumber field contains the entire phone number without a specific format.
@DefaultInd	0..1	DefaultInd is Optional and would indicate whether the phone number is the primary phone number for the profile.
OTA_HotelResNotifRQ / HotelReservations / HotelReservation / ResGuests / ResGuest / Profiles / ProfileInfo / Profile / Customer / Email	0..5	This path is used to transmit the Customer details. Details of the company or Travel agency use a different path. This field would be used to pass the guest's email address.
@EmailType	0..1	The Email Type attribute uses the OpenTravel Alliance code list EAT and indicates the type of email address provided (personal – code 1 <i>versus</i> business – code 2, in the case of the Guest details) and must be passed if more than one email address is passed. If only one email address is passed it can be Optional.
@DefaultInd	0..1	DefaultInd is Optional and would indicate whether the email is the primary email for the profile.
OTA_HotelResNotifRQ / HotelReservations / HotelReservation / ResGuests / ResGuest / Profiles / ProfileInfo / Profile / Customer / Address	0..5	This path is used to transmit the Customer details. Details of the company or Travel agency use a different path. This field would be used to pass the guest's mail address.
@Type	1	The Type attribute uses the OpenTravel Alliance code list CLT and indicates the type of address provided (Home – code 1 <i>versus</i> business – code 2 or Other – code 3, in the case of the Guest details) and must be passed if an address is passed.

Element @Attribute	Num	Description/Contents
OTA_HotelResNotifRQ / HotelReservations / HotelReservation / ResGuests / ResGuest / Profiles / ProfileInfo / Profile / Customer / Address / AddressLine	0..5	This path is used to transmit the Customer details. Details of the company or Travel agency use a different path. This field would be used to pass the guest's address. More than one line can be sent.
OTA_HotelResNotifRQ / HotelReservations / HotelReservation / ResGuests / ResGuest / Profiles / ProfileInfo / Profile / Customer / Address / CityName	0..1	This path is used to transmit the Customer details. Details of the company or Travel agency use a different path. This field would be used to pass the guest's city.
OTA_HotelResNotifRQ / HotelReservations / HotelReservation / ResGuests / ResGuest / Profiles / ProfileInfo / Profile / Customer / Address / StateProv	0..1	This path is used to transmit the Customer details. Details of the company or Travel agency use a different path. This field would be used to pass the guest's State.
@StateCode	0..1	State expressed in the Standard 2-8 characters code.
OTA_HotelResNotifRQ / HotelReservations / HotelReservation / ResGuests / ResGuest / Profiles / ProfileInfo / Profile / Customer / Address / PostalCode	0..1	This path is used to transmit the Customer details. Details of the company or Travel agency use a different path. This field would be used to pass the guest's Postal / ZIP code.
OTA_HotelResNotifRQ / HotelReservations / HotelReservation / ResGuests / ResGuest / Profiles / ProfileInfo / Profile / Customer / Address / CountryName	0..1	This path is used to transmit the Customer details. Details of the company or Travel agency use a different path. This field would be used to pass the guest's Country.
@Code	0..1	Country expressed in the Standard ISO 3166 codes.
OTA_HotelResNotifRQ / HotelReservations / HotelReservation / ResGuests / ResGuest / Profiles / ProfileInfo / Profile / Customer / CustLoyalty	0..5	Optional. This path enables the user to pass specific IDs linked to the guest profile.
@ProgramID	0..1	The ProgramID attribute can be used to indicate the program that is being passed. For instance, we could use it to pass: Frequent Guest, Frequent Traveller and Company ID.

Element @Attribute	Num	Description/Contents
@MembershipID	0..1	The membershipID attribute will indicate the actual number.
@LoyalLevel	0..1	Indicates special privileges in program assigned to individual.
@EffectiveDate	0..1	Indicates the starting date of the program.
@ExpireDate	0..1	Indicates the expiration date of the program.
@SignupDate	0..1	Indicates the customer's sign-up date.
OTA_HotelResNotifRQ / HotelReservations / HotelReservation / ResGuests / ResGuest / Profiles / ProfileInfo / Profile / Customer / RelatedTraveler	0..9	Optional. This path is used to transmit the Accompanying Guest details.
@Relation	0..1	Indicates the type of relationship with the person in the profile, such as Spouse, Child, Family, Business Associate, Interest Group, Medical, Security, Other, etc.
@Birthdate	0..1	The related traveler's birthday information.
OTA_HotelResNotifRQ / HotelReservations / HotelReservation / ResGuests / ResGuest / Profiles / ProfileInfo / Profile / Customer / RelatedTraveler / PersonName	0..5	Detailed name information for the customer.
@Language	0..1	The language code for which the name data is represented. While this value is optional, it is HIGHLY RECOMMENDED that it be used.
@NameType	0..1	Former, Nickname, Alternate, etc.
OTA_HotelResNotifRQ / HotelReservations / HotelReservation / ResGuests / ResGuest / Profiles / ProfileInfo / Profile / Customer / RelatedTraveler / PersonName / NamePrefix	0..1	Optional. This path is used to transmit the Accompanying Guest details. This field would be used to pass the guest's name Prefix.
OTA_HotelResNotifRQ / HotelReservations / HotelReservation / ResGuests / ResGuest / Profiles / ProfileInfo / Profile / Customer / RelatedTraveler / PersonName / GivenName	0..1	Optional. This path is used to transmit the Accompanying Guest details. This field would be used to pass the guest's First name.

Element @Attribute	Num	Description/Contents
OTA_HotelResNotifRQ / HotelReservations / HotelReservation / ResGuests / ResGuest / Profiles / ProfileInfo / Profile / Customer / RelatedTraveler / PersonName / MiddleName	0..1	Optional. This path is used to transmit the Accompanying Guest details. This field would be used to pass the guest's Middle Name.
OTA_HotelResNotifRQ / HotelReservations / HotelReservation / ResGuests / ResGuest / Profiles / ProfileInfo / Profile / Customer / RelatedTraveler / PersonName / Surname	1	Mandatory if an accompanying traveler profile is passed. This path is used to transmit the Accompanying Guest details. This field would be used to pass the guest's Surname.
OTA_HotelResNotifRQ / HotelReservations / HotelReservation / ResGuests / ResGuest / Profiles / ProfileInfo / Profile / Customer / RelatedTraveler / PersonName / NameSuffix	0..1	Optional. This field would be used to pass the accompanying traveler's suffix.
OTA_HotelResNotifRQ / HotelReservations / HotelReservation / ResGuests / ResGuest / Profiles / ProfileInfo / Profile / CompanyInfo / CompanyName	0..1	Detailed name information for the company.
@Code	0..1	Identifies a company by the company code.
OTA_HotelResNotifRQ / HotelReservations / HotelReservation / ResGuests / ResGuest / Profiles / ProfileInfo / Profile / CompanyInfo / AddressInfo / AddressLine	0..5	Mandatory if a company or travel agency profile is passed. Address line is repeatable up to 5 times. This path is used to transmit the details for a Company or Travel agency profile. This element is used to pass the Company or Travel Agency's address. Type attribute is not needed here as it is clearly a business address.
OTA_HotelResNotifRQ / HotelReservations / HotelReservation / ResGuests / ResGuest / Profiles / ProfileInfo / Profile / CompanyInfo / AddressInfo / CityName	0..1	This path is used to transmit the details for a Company or Travel agency profile. This element is used to pass the Company or Travel Agency's City.

Element @Attribute	Num	Description/Contents
OTA_HotelResNotifRQ / HotelReservations / HotelReservation / ResGuests / ResGuest / Profiles / ProfileInfo / Profile / CompanyInfo / AddressInfo / StateProv	0..1	This path is used to transmit the details for a Company or Travel agency profile. This element is used to pass the Company or Travel Agency's State.
@StateCode	0..1	State expressed in the Standard 2-8 characters code.
OTA_HotelResNotifRQ / HotelReservations / HotelReservation / ResGuests / ResGuest / Profiles / ProfileInfo / Profile / CompanyInfo / AddressInfo / PostalCode	0..1	This path is used to transmit the details for a Company or Travel agency profile. This element is used to pass the Company or Travel Agency's postal or ZIP code.
OTA_HotelResNotifRQ / HotelReservations / HotelReservation / ResGuests / ResGuest / Profiles / ProfileInfo / Profile / CompanyInfo / AddressInfo / CountryName	0..1	Optional. This path is used to transmit the details for a Company or Travel agency profile. This element is used to pass the Company or Travel Agency's Country.
@Code	0..1	Country expressed in the Standard ISO 3166 codes.
OTA_HotelResNotifRQ / HotelReservations / HotelReservation / ResGuests / ResGuest / Profiles / ProfileInfo / Profile / CompanyInfo / TelephoneInfo	1..n	Mandatory if a company or travel agency profile is passed. This element is used to pass the Company or Travel Agency's phone and numbers. PhoneLocationType is not needed here as this is an office telephone.
@PhoneTechType	0..1	The PhoneTechType attribute refers to the OpenTravel Alliance PTT code list and indicates which type of number is transmitted (phone <i>versus</i> fax). The codes to be used by HTNG are: Code 1 - Voice Code 3 - Fax Code 5 - Mobile
@Phone Number	1	PhoneNumber contains the actual number as a string of max 32 characters and it is Mandatory.
@CountryAccessCode	0..1	Code assigned by telecommunications authorities for international country access identifier.
@Area City Code	0..1	Code assigned for telephones in a specific region, city or area.

Element @Attribute	Num	Description/Contents
@FormattedInd	1	FormattedInd is Mandatory. If the partner can use Country and Area codes then it should be set to NO. If country code and area code are passed then they should not appear again in the PhoneNumber field. If the partner cannot use country and area code then the entire number is passed in the PhoneNumber field and FormattedInd. It should be set to YES if the number needs to be parsed as there is a separation of the different parts or set to NO to indicate that the PhoneNumber field contains the entire phone number without a specific format.
@DefaultInd	0..1	DefaultInd would indicate whether the phone number is the primary phone number for the profile.
OTA_HotelResNotifRQ / HotelReservations / HotelReservation / ResGuests / ResGuest / Profiles / ProfileInfo / Profile / CompanyInfo / Email	0..1	This path is used to transmit the details for a Company or Travel agency profile. This element is used to pass the Company or Travel Agency's email. EmailType attribute is not needed here as it is clearly a business address.
OTA_HotelResNotifRQ / HotelReservations / HotelReservation / ResGuests / ResGuest / Profiles / ProfileInfo / Profile / TPA_Extensions	0..n	Could be used to pass additional Profile data upon agreement between partners (specific Keys or codes, for instance).
OTA_HotelResNotifRQ / HotelReservations / HotelReservation / ResGuests / ResGuest / ArrivalTransport / TransportInfo	0..1	The 3 attributes below are used to indicate the arrival details for the guests to whom the booking pertains.
@Type	0..1	Type is used to indicate the method of conveyance of this guest. Values: Air, Rail, Bus, Boat, Private Auto, Other.
@ID	0..1	ID is the actual identifier of this transportation method (e.g., flight number).
@Time	0..1	Time is the estimated arrival time.
OTA_HotelResNotifRQ / HotelReservations / HotelReservation / ResGuests / ResGuest / DepartureTransport / TransportInfo	0..1	The 3 attributes are used to indicate the departure details for the guests to whom the booking pertains.
@Type	0..1	Type is used to indicate the method of departure of this guest. Values: Air, Rail, Bus, Boat, Private Auto, Other.

Element @Attribute	Num	Description/Contents
@ID	0..1	ID is the actual identifier of this transportation method (e.g., flight number).
@Time	0..1	Time is the expected departure time.
OTA_HotelResNotifRQ / HotelReservations / HotelReservation / ResGlobalInfo / HotelReservationIDs / HotelReservationID	0..n	The HotelReservationID element can be repeated multiple types to transfer: <ol style="list-style-type: none"> 1. The PNR number for the reservation assigned by the GDS. 2. The reservation number for reservations that are linked to this reservation as associated reservation either for guests travelling together, sharing a room, or as part of an Itinerary.
@ResID_Type	1	ResID_Type is assigned values from the UIT code list. <p>10 – Reservation Server 13 – Internet Broker 14 – Reservation Broker 24 – Travel Agent PNR 25 – Associated reservation (travelling with) 26 – Associated itinerary reservation 27 – Associated shared reservation 34 – Master Itinerary</p> <p>For any other type of system the implementing partners should agree on the appropriate code from the OpenTravel Alliance UIT code list.</p>
@ResID_Value	1	If HotelReservationID is passed to transfer the PNR, ResID_Value is the PNR passed by the GDS. If HotelReservationID is passed to transfer the associated reservations, ResID_Value would be the confirmation number of the reservation that is associated to the one that is being transferred.
@ResID_Source	0..1	A unique identifier to indicate the source system which generated the ResID_Value
@ForGuest	0	When 1 the confirmation number given to the guest. This number should be searchable by the destination.
OTA_HotelResNotifRQ/ HotelReservations/ HotelReservation/ Services	0..n	Collection of services.

Element @Attribute	Num	Description/Contents
OTA_HotelResNotifRQ/ HotelReservations/ HotelReservation/ Services/ Service	1	A Service object represents a non-room product provided to guests. Service products may have associated inventory and charges.
@ServicePricingType	1	An enumerated type that defines how a service is priced: <ol style="list-style-type: none"> 1. Per stay 2. Per night 3. Per person per night 4. Per use
@ServiceInventoryCode	1	The representation of the specific service being reserved.
@Inclusive	1	Whether the price for this service is included in the room rate.
@Quantity	0..1	The number of tickets, rounds of golf, etc. Also serves as the number of persons when pricing class is per person or per person per night.
OTA_HotelResNotifRQ/ HotelReservations/ HotelReservation/ Services/ Service/ Price	0..99	The selling price of this service.
OTA_HotelResNotifRQ/ HotelReservations/ HotelReservation/ Services/ Service/ Price / Total	0..1	This is the total amount for the stay.
@CurrencyCode	1	CurrencyCode used ISO 4217 codes to indicate the currency of the total rate.
@AmountBeforeTax OR @AmountAfterTax	1	Either @AmountBeforeTax or AmountAfterTax is Mandatory for each @NumberOfGuests. Partners must select whether to send either the @AmountBeforeTax or @AmountAfterTax (or both) attributes.
OTA_HotelResNotifRQ/ HotelReservations/ HotelReservation/ Services/ Service/ Price / Total / Taxes	0..1	Optional. Can be used for Total Pricing.
@Amount	0..1	Total Amount of Taxes applied to the service.
@CurrencyCode	0..1	Currency of the total Amount of Taxes.

Element @Attribute	Num	Description/Contents
OTA_HotelResNotifRQ/ HotelReservations/ HotelReservation/ Services/ Service/ Price / Total / Taxes / Tax	0..99	Optional. Can be used for Total Pricing.
@Type	0..1	The Type attribute is an enumeration to indicate whether the tax is “inclusive”, “exclusive” or “cumulative”.
@Code	0..1	The Code attribute refers to OpenTravel Alliance list FTT (fee tax type) and is used to indicate the specific tax or fee that is being transferred.
@Amount	0..1	Amount of the specific tax/fee transferred.
@CurrencyCode	0..1	Currency for the Amount of the specific tax/fee transferred.
OTA_HotelResNotifRQ/ HotelReservations/ HotelReservation/ Services/ Service/ ServiceDetails	0..99	Details on the Service including Guest Counts, Time Span of this Service, pointers to Res Guests, guest Memberships, Comments and Special Requests pertaining to this particular Service and finally financial information related to the Service, including Guarantee, Deposit and Payment, and Cancellation Penalties.
OTA_HotelResNotifRQ/ HotelReservations/ HotelReservation/ Services/ Service/ ServiceDetails GuestCounts / GuestCount	0..1	Contains the type and number of guests included in the service request.
@AgeQualifyingCode	1	The 2 codes used from the OpenTravel Alliance AQC code list are: 8-Child, 10-Adult.
@Count	1	Count will include the number and will be repeated for each Type of guest.
@Age	0..1	Defines the age of a guest.
OTA_HotelResNotifRQ/ HotelReservations/ HotelReservation/ Services/ Service/ ServiceDetails/ TimeSpan	0..99	These are the in and out dates of the booking.
@Start	1	Service Start Date.
@End	1	Service End Date.
OTA_HotelResNotifRQ/ HotelReservations/ HotelReservation/ Services/ Service/ ServiceDetails/ Comments / Comment	1	Comment details.

Element @Attribute	Num	Description/Contents
@Name	0..1	Allows types of Comments to be differentiated.
@GuestViewable	1	This indicates that the comment can actually be seen by the guest and is necessary when two different types of comments are passed: one which is guest viewable and one that isn't. The Attribute is of Boolean nature.
OTA_HotelResNotifRQ/ HotelReservations/ HotelReservation/ Services/ Service/ ServiceDetails/ Comments / Comment / Text	1	Comments.

4.1.2 Data Element Table – Book or Change Reservation Response

Element @Attribute	Num	Description/Contents
OTA_HotelResNotifRS	1	Root element of the message.
@EchoToken	0..1	As per OpenTravel Alliance Specifications.
@Version	1	Version is a mandatory attribute in OTA; therefore, it must remain Mandatory in HTNG in order to be able to use the same message.
@TimeStamp	1	Time of the transaction.
@ResResponseType	1	Given that the OTA_HotelResNotifRQ message is used for additions, modifications and cancellations, this attribute is used to replicate whether the original message was an addition, a modification or a cancellation and does not refer to the status of the transaction itself but rather to the nature of the original message. The only three enumerations allowed will therefore be: Committed, Modified and Cancelled. In this case Committed would be used.
OTA_HotelResNotifRS / Errors / Error	1..99	Mandatory ONLY if Success element is not sent. Only needed if RQ message was unsuccessful.
@Type	1	Mandatory in OTA. Refers to OpenTravel Alliance EWT list (error warning type).
@Code	0..1	Refers to OpenTravel Alliance list ERR. Should be used wherever possible.
@RecordID	0..1	If the receiving system is able to identify within a batch of reservations which reservation failed, the uniqueID of the rejected reservation should be reported here.

Element @Attribute	Num	Description/Contents
OTA_HotelResNotifRS / Success	1	Mandatory if no Errors were sent. This is the annotation that the reservation batch was received successfully. It could be combined with warning messages if some of the reservations in the batch had issues.
OTA_HotelResNotifRS / Warnings / Warning	0..99	Can be used in conjunction with Success message.
@Type	1	Refers to OpenTravel Alliance EWT list (error warning type).
@Code	0..1	Refers to OpenTravel Alliance list ERR. Should be used wherever possible.
@RecordID	0..1	If the receiving system is able to identify within a batch of reservations which reservation has a warning, the uniqueID of that reservation should be reported here.
OTA_HotelResNotifRS / HotelReservations / HotelReservation	1	Must be sent for the message to have a meaning.
@ResStatus		<p>Indicates the current status of the reservation.</p> <p>Valid values are dependant on the roles:</p> <p>Reservation Broker → Reservation Server</p> <ul style="list-style-type: none"> Reserved Waitlisted <p>Reservation Server → Reservation Broker</p> <ul style="list-style-type: none"> Reserved Waitlisted In-house Checked-Out
OTA_HotelResNotifRS / HotelReservations / HotelReservation / UniqueID	1	This is the confirmation number for the reservation assigned by the immediate originator of the booking (i.e., the system that sent the OTA_HotelResNotifRQ message for which the OTA_HotelresNotifRS message is sent).
@Type	1	<p>Type is assigned values from the UIT code list.</p> <p>If the original system was a CRS:</p> <p>Type = 14 - Reservation ID is the actual confirmation number</p> <p>If it was a PMS:</p> <p>Type = 10 - Hotel</p>

Element @Attribute	Num	Description/Contents
@ID	1	ID is the CRS confirmation number (or PMS number if the reservation was originated in the PMS).
OTA_HotelResNotifRQ / HotelReservations / HotelReservation / ResGlobalInfo / HotelReservationIDs / HotelReservationID	1..n	This is the confirmation number associated by the system that received the booking.
@ResID_Type	1	ResID_Type is assigned values from the UIT code list. 10 – Reservation Server 13 – Internet Broker 14 – Reservation Broker 24 – Travel Agent PNR 25 – Associated reservation (travelling with) 26 – Associated itinerary reservation 27 – Associated shared reservation 34 – Master Itinerary For any other type of system the implementing partners should agree on the appropriate code from the OpenTravel Alliance UIT code list.
@ResID_Value	1	ResID_Value is the actual confirmation number.
@ResID_Source	0..1	A unique identifier to indicate the source system that generated the ResID_Value.
@ForGuest	0..1	When 1 the confirmation number given to the guest. This number should be searchable by the destination.

4.2 Cancel Reservation

4.2.1 Data Element Table – Cancel Reservation Request

Element @Attribute	Num	Description/Contents
OTA_HotelResNotifRQ	1	Root element of the message.
@EchoToken	0..1	As per OpenTravel Alliance Specifications.
@ResStatus	1	Of all the enumerations listed by OTA, the one recommended by HTNG for this message should be: "Cancel".
@Version	1	Version is a mandatory attribute in OTA; therefore, it must remain Mandatory in HTNG in order to be able to use the same message.
@TimeStamp	1	Time of the transaction.

Element @Attribute	Num	Description/Contents
OTA_HotelResNotifRQ / POS / Source / RequestorID	1	This identifies the system that is sending the reservation.
@Type	1	Type attribute uses the OpenTravel Alliance code list UIT and ID is used for the name or ID of the requestor. For example, type 22 – ERSP (Electronic reservation service provider) and ID: TrustCRS.
@ID	1	The ID used will be agreed by the trading partners and remain the same throughout the messages.
OTA_HotelResNotifRQ / HotelReservations / HotelReservation	1	Must be sent for the message to have a meaning.
@CreatorID	1	The CreatorID is the identifier of the user or, in its absence, the office that originated the reservation.
@CreateDateTime	1	This is the date when the reservation was first made.
@LastModifiedDateTime	1	This indicates the last date and time when the reservation was modified.
@LastModifierID	1	This indicates the last user who modified the reservation.
@ResStatus	1	<p>Indicates the current status of the reservation.</p> <p>Valid values are dependant on the roles:</p> <p>Reservation Broker → Reservation Server</p> <ul style="list-style-type: none"> Cancelled <p>Reservation Server → Reservation Broker</p> <ul style="list-style-type: none"> Cancelled No-Show
OTA_HotelResNotifRQ / HotelReservations / HotelReservation / UniqueID	1	<p>The unique ID depends on the system generating the booking; i.e., if the booking is generated by the PMS this field would contain the PMS confirmation number; if the system is a CRS, the CRS confirmation number.</p> <p>The Unique ID generated by the system originating the booking must be carried through to the final receiver of the booking (generally the PMS) to ensure that the client can use the same confirmation number whether he/she deals with the web site originating the booking or the central reservation office of the hotel or the property itself.</p>
@Type	1	Type is assigned codes from the UIT (Unique ID Type) code list.

Element @Attribute	Num	Description/Contents
		<p>If the originator is a CRS the recommended value for this message is 14 – Reservation.</p> <p>If the originator is a PMS the recommended value for this message would be 10 – Hotel.</p>
@ID	1	ID is the actual confirmation number.
OTA_HotelResNotifRQ / HotelReservations / HotelReservation / RoomStays / RoomStay / BasicPropertyInfo	1	Property Information for the Room Stay.
@HotelCode	1	This is the property for which the reservations are being transferred.
@ChainCode	0..1	ChainCode indicates the chain to which the property belongs.
@BrandCode	0..1	BrandCode indicates the Brand within the Chain to which the property belongs.
OTA_HotelResNotifRQ / HotelReservations / HotelReservation / ResGlobalInfo / HotelReservationIDs / HotelReservationID	1..n	<p>This can be used to transfer:</p> <ol style="list-style-type: none"> 1. The confirmation number associated by the system that received the booking. (Mandatory) 2. This would also be used to pass the cancellation number of the reservation being cancelled IF the generating system assigns a different cancellation number to the original Unique ID (Optionally). If it does not, the same info passed in Unique ID would be repeated here (Optionally).
@ResID_Type	1	<p>ResID_Type is assigned values from the UIT code list.</p> <p>10 – Reservation Server 13 – Internet Broker 14 – Reservation Broker 15 – [Cancellation] 24 – Travel Agent PNR 25 – Associated reservation (travelling with) 26 – Associated itinerary reservation 27 – Associated shared reservation 34 – Master Itinerary</p> <p>For any other type of system the implementing partners should agree on the appropriate code from the OpenTravel Alliance UIT code list.</p>
@ResID_Value	1	ResID_Value is the actual confirmation number (if type is 10 or 14).

Element @Attribute	Num	Description/Contents
		ResID_Value would be the cancellation number from the originating system (if type is 15).
@ResID_Source	0..1	ResID_Source would be used to transfer the name of the system that generated the number (i.e., the CRS or the PMS).
@ResID_Date	0..1	ResID_Date would be (Optionally) used when transferring a cancellation number and it would indicate the date when the cancellation took place.
@ForGuest	0..1	When 1 the confirmation number given to the guest. This number should be searchable by the destination.
OTA_HotelResNotifRQ / HotelReservations / HotelReservation / ResGlobalInfo / Comments	0..1	A collection of Comment objects. Comments that apply to the whole Reservation or a particular Room Stay or Service.
OTA_HotelResNotifRQ / HotelReservations / HotelReservation / ResGlobalInfo / Comments / Comment	1..n	Comment details.
@Name	0..1	Allows types of Comments to be differentiated.
OTA_HotelResNotifRQ / HotelReservations / HotelReservation / ResGlobalInfo / Comments / Comment	1	
@Name	0..1	Allows types of Comments to be differentiated. Valid values would be determined by Trader-Partners.
@GuestViewable	0	This indicates that the comment can actually be seen by the guest and is necessary when two different types of comments are passed: one which is guest viewable and one that isn't. The Attribute is of Boolean nature.
OTA_HotelResNotifRQ / HotelReservations / HotelReservation / ResGlobalInfo / Comments / Comment / Text	1	Comments.
OTA_HotelResNotifRQ / HotelReservations / HotelReservation / ResGlobalInfo / Profiles	0..1	A collection of Profile objects or Unique IDs of Profiles.
OTA_HotelResNotifRQ / HotelReservations / HotelReservation / ResGlobalInfo / Profiles / ProfileInfo	1..n	A collection of Profiles or Unique IDs of Profiles.

Element @Attribute	Num	Description/Contents
OTA_HotelResNotifRQ / HotelReservations / HotelReservation / ResGlobalInfo / Profiles / ProfileInfo / Profile / Customer / ContactPerson / PersonName	0..5	Detailed name information for the contact person.
@Language	0..1	The language code for which the name data is represented. While this value is optional, it is HIGHLY RECOMMENDED that it be used.
@NameType	0..1	Former, Nickname, Alternate, etc.
OTA_HotelResNotifRQ / HotelReservations / HotelReservation / ResGlobalInfo / Profiles / ProfileInfo / Profile / Customer / ContactPerson / PersonName / SurName	1	The name of the person cancelling the reservation.
OTA_HotelResNotifRQ / HotelReservations / HotelReservation / ResGlobalInfo / Profiles / ProfileInfo / Profile / Customer / ContactPerson / Telephone	0..1	Information about a telephone number, including the actual number and its usage.
@PhoneNumber	1	The phone number of the person cancelling the reservation.

4.2.2 Data Element Table – Cancel Reservation Response

Element @Attribute	Num	Description/Contents
OTA_HotelResNotifRS	1	Root element of the message.
@EchoToken	0..1	As per OpenTravel Alliance Specifications.
@Version	1	Version is a mandatory attribute in OTA; therefore, it must remain Mandatory in HTNG in order to be able to use the same message.
@TimeStamp	1	Time of the transaction.
@ResResponseType	1	Given that the OTA_HotelResNotifRQ message is used for additions, modifications and cancellations, this attribute is used to replicate whether the original message was an addition, a modification or a cancellation and does not refer to the status of the transaction itself but rather to the nature of the original message. The only three enumerations allowed will therefore be: Committed, Modified and Cancelled. In this case Cancelled would be

Element @Attribute	Num	Description/Contents
		used.
OTA_HotelResNotifRS / Errors	0..1	Mandatory ONLY if Success element is not sent. Only needed if RQ message was unsuccessful.
OTA_HotelResNotifRS / Errors / Error	1..99	
@Type	1	Mandatory in OTA. Refers to OpenTravel Alliance EWT list (error warning type).
@Code	0..1	Refers to OpenTravel Alliance list ERR. Should be used wherever possible.
@RecordID	0..1	If the receiving system is able to identify within a batch of reservations which reservation failed, the uniqueID of the rejected reservation should be reported here.
OTA_HotelResNotifRS / Success	1	Mandatory if no Errors were sent. This is the annotation that the reservation batch was received successfully. It could be combined with warning messages if some of the reservations in the batch had issues.
OTA_HotelResNotifRS / Warnings	0..1	Indicates that the recipient of the request message identified one or more business-level warnings/errors, but the message itself was successfully processed.
OTA_HotelResNotifRS / Warnings / Warning	1..99	Used in conjunction with the Success element to define a business error.
@Type	1	Refers to OpenTravel Alliance EWT list (error warning type).
@Code	0..1	Refers to OpenTravel Alliance list ERR. Should be used wherever possible.
@RecordID	0..1	If the receiving system is able to identify within a batch of reservations which reservation has a warning, the uniqueID of that reservation should be reported here.
OTA_HotelResNotifRS / HotelReservations / HotelReservation	0..1	Contains a hotel reservation.
@ResStatus	1	Indicates the current status of the reservation. Valid values are dependant on the roles: Reservation Broker → Reservation Server <ul style="list-style-type: none"> Cancelled Reservation Server → Reservation Broker <ul style="list-style-type: none"> Cancelled No-Show

Element @Attribute	Num	Description/Contents
OTA_HotelResNotifRS / HotelReservations / HotelReservation / UniqueID	1	This is the confirmation number for the reservation assigned by the immediate originator of the booking (i.e., the system which sent the OTA_HotelResNotifRQ message for which the OTA_HotelResNotifRS message is sent).
@Type	1	Type is assigned values from the UIT code list. If the original system was a CRS: Type = 14 – Reservation ID is the actual confirmation number If it was a PMS: Type = 10 – Hotel
@ID	1	ID is the CRS confirmation number (or PMS number if the reservation was originated in the PMS).
OTA_HotelResNotifRQ / HotelReservations / HotelReservation / ResGlobalInfo / HotelReservationIDs / HotelReservationID	1..n	This can be used to transfer: <ol style="list-style-type: none"> 1. The confirmation number associated by the system that received the booking. (Mandatory) 2. The cancellation number of the reservation being cancelled IF the generating system assigns a different cancellation number to the original Unique ID. (Optionally); if it does not, the same info passed in Unique ID would be repeated here. (Optionally) 3. The cancellation number of the receiving system IF the receiving system assigns a different cancellation number to the original confirmation. (Optionally)
@ResID_Type	1	ResID_Type is assigned values from the UIT code list. 10 – Reservation Server 13 – Internet Broker 14 – Reservation Broker 15 – [Cancellation] 24 – Travel Agent PNR 25 – Associated reservation (travelling with) 26 – Associated itinerary reservation 27 – Associated shared reservation 34 – Master Itinerary For any other type of system the implementing partners should agree on the appropriate code from the OpenTravel Alliance UIT code list.

Element @Attribute	Num	Description/Contents
@ResID_Value	1	ResID_Value is the actual confirmation number (if type is 10 or 14). ResID_Value would be the cancellation number from the originating system (if type is 15).
@ResID_Source	0..1	ResID_Source would be used to transfer the name of the system that generated the number (i.e., the CRS or the PMS).
@ResID_Date	0..1	ResID_Date would be (Optionally) used when transferring a cancellation number and it would indicate the date when the cancellation took place.
@ForGuest	0..1	When 1 the confirmation number given to the guest. This number should be searchable by the destination.

4.3 Pending Reservation

4.3.1 Data Element Table – Pending Reservation Request

Element @Attribute	Num	Description/Contents
OTA_ReadRQ	1	Root element of the message.
@EchoToken	0..1	As per OpenTravel Alliance Specifications.
@Version	1	Version is a mandatory attribute in OTA; therefore, it must remain Mandatory in HTNG in order to be able to use the same message.
@TimeStamp	1	Time of the transaction.
OTA_ReadRQ / POS / Source / RequestorID	1	This identifies the system that is sending the reservation.
@Type	1	Type attribute uses the OpenTravel Alliance code list UIT and ID is used for the name or ID of the requestor. For example, type 22 – ERSP (Electronic reservation service provider) and ID: SynXis.
@ID	1	The ID used will be agreed upon by the trading partners and remain the same throughout the messages.
OTA_ReadRQ / POS / Source / BookingChannel	1..2	This element is used to pass the booking source for the reservation. To send secondary booking channel information an additional Source element needs to be sent.
@Primary	1	Primary attribute would be set to “true” if only one booking channel is transferred. Only one source should be marked “true” if multiple sources are sent.

Element @Attribute	Num	Description/Contents
@Type	1	Type is mandatory in OpenTravel Alliance and indicates the type of booking channel. Refers to OpenTravel Alliance code list BCT (Booking Channel Type): <ul style="list-style-type: none"> 1 Global distribution system (GDS) 2 Alternative distribution system (ADS) 3 Sales and catering system (SCS) 4 Property management system (PMS) 5 Central reservation system (CRS) 6 Tour operator system (TOS) 7 Internet
OTA_ReadRQ / POS / Source / BookingChannel / CompanyName	0..1	The name of the booking source.
OTA_ReadRQ / POS / Source / BookingChannel / CompanyName @Code	0..1	Code is Optional and can be used to transfer the code of the Booking channel if such code is a recognized industry standard – the name, however, should always be sent as well as the code.
OTA_ReadRQ / ReadRequests / HotelReadRequest	1	Must be sent for the message to have a meaning. For a pull reservation, the HotelReadRequest element will be used since the confirmation number is not known.
@HotelCode	1	This is the property for which the reservations are being transferred.
@ChainCode	0..1	ChainCode indicates the chain to which the property belongs.
@BrandCode	0..1	BrandCode indicates the Brand within the Chain to which the property belongs.
OTA_ReadRQ / ReadRequests / HotelReadRequest / SelectionCriteria	1	Contains the selection criteria to filter reservations to be retrieved.
@Start	0..1	The start date of the date range of the reservations to be retrieved. What the date range refers to is defined by @DateType. If @EndDate or @DateType is present, @StartDate is Mandatory.
@End	0..1	The end date of the date range of the reservations to be retrieved. What the date range refers to is defined by @DateType. If @StartDate or @DateType is present, @EndDate is Mandatory.

Element @Attribute	Num	Description/Contents
@DateType	0..1	An enumerated value that defines to what the @StartDate and @EndDate date range refers. If @StartDate or @EndType is present, @EndDate is Mandatory. Values: ArrivalDate, DepartureDate, CreateDate, LastUpdateDate.
@SelectionType	1	An enumerated value that specifies the delivery status of the reservations to be retrieved. Values: All, PreviouslyDelivered, Undelivered.
@GroupCode	0..1	A code identifying the group block of the reservations to be retrieved.
@ResStatus	0..1	An enumerated value that specifies the reservation status of the reservations to be retrieved. OpenTravel Alliance type HotelResStatusType that is a union of OpenTravel Alliance TransactionActionType and OpenTravel Alliance PMS_ResStatusType.
@OriginalDeliveryMethod	0..1	A coded value that specifies the original delivery method of the reservations to be retrieved. Values are: <div> 1 Fax 2 Email 3 Mail 4 Courier 5 Airport collection 6 City office 7 Hotel desk 8 Will call 9 Express mail 10 Telephone 11 XML 12 FTP 13 Website 14 HTTP 15 Non-XML 16 Any </div>

4.3.2 Data Element Table – Pending Reservation Response

Element @Attribute	Num	Description/Contents
OTA_ResRetrieveRS	1	Root element of the message.
@EchoToken	0..1	As per OpenTravel Alliance Specifications.

Element @Attribute	Num	Description/Contents
@Version	1	Version is a mandatory attribute in OTA; therefore, it must remain Mandatory in HTNG in order to be able to use the same message.
@TimeStamp	1	Time of the transaction.
@ResStatus	1	Of all the enumerations listed by OpenTravel Alliance: <ul style="list-style-type: none"> • “Commit” for new reservations. • “Modify” changes to existing reservations.
OTA_ResRetrieveRS / Errors	0..1	Mandatory ONLY if Success element is not sent. Only needed if RQ message was unsuccessful.
OTA_ResRetrieveRS / Errors / Error	1..99	An error that occurred during the processing of a message.
@Type	1	Mandatory in OTA. Refers to OpenTravel Alliance EWT list (error warning type).
@Code	0..1	Refers to OpenTravel Alliance list ERR. Should be used wherever possible.
@RecordID	0..1	If the receiving system is able to identify within a batch of reservations which reservation failed, the uniqueID of the rejected reservation should be reported here.
OTA_ResRetrieveRS / Success	1	Mandatory if no Errors were sent. This is the annotation that the reservation batch was received successfully. It could be combined with warning messages if some of the reservations in the batch had issues.
OTA_ResRetrieveRS / Warnings	0..1	Indicates that the recipient of the request message identified one or more business-level warnings/errors, but the message itself was successfully processed.
OTA_ResRetrieveRS / Warnings / Warning	1..n	Used in conjunction with the Success element to define a business error.
@Type	1	Refers to OpenTravel Alliance EWT list (error warning type).
@Code	0..1	Refers to OpenTravel Alliance list ERR. Should be used wherever possible.
@RecordID	0..1	If the receiving system is able to identify within a batch of reservations which reservation has a warning, the uniqueID of that reservation should be reported here.
OTA_ResRetrieveRS / ReservationList	1	Must be sent for the message to have a meaning.

Element @Attribute	Num	Description/Contents
OTA_ResRetrieveRS / ReservationList / HotelReservation	0..n	Contains the reservations that match the requested criteria. The HotelReservation node should be identical to the HotelReservation node used in the OTA_HotelResNotifRQ messages for book, modify and cancel. If a HotelReservation node does not exist, no reservations are available that meet the search criteria.
OTA_ResRetrieveRS / ReservationsList / HotelReservation	1	Must be sent for the message to have a meaning.
@CreatorID	1	The CreatorID is the identifier of the user or, in its absence, the office that originated the reservation.
@CreateDateTime	1	This is the date when the reservation was first made.
@LastModifiedDateTime	0..1	This indicates the last date and time when the reservation was modified. MANDATORY if the ResStatus is "Modify".
@LastModifierID	0..1	This indicates the last user who modified the reservation.
@ResStatus	0..1	<p>Indicates the current status of the reservation.</p> <p>Valid values are dependant on the roles:</p> <p>Reservation Broker → Reservation Server</p> <ul style="list-style-type: none"> • Reserved • Waitlisted <p>Reservation Server → Reservation Broker</p> <ul style="list-style-type: none"> • Reserved • Waitlisted • No-show • In-house • Checked-Out
OTA_ResRetrieveRS / ReservationsList / HotelReservation / POS / Source / BookingChannel	1..2	<p>This element is used to pass the booking source for the reservation.</p> <p>To send secondary booking channel information an additional Source element needs to be sent.</p>

Element @Attribute	Num	Description/Contents
@Type	1	Type is mandatory in OpenTravel Alliance and indicates the type of booking channel. Refers to OpenTravel Alliance code list BCT (Booking Channel Type): <ul style="list-style-type: none"> 1 Global distribution system (GDS) 2 Alternative distribution system (ADS) 3 Sales and catering system (SCS) 4 Property management system (PMS) 5 Central reservation system (CRS) 6 Tour operator system (TOS) 7 Internet
@Primary	1	Primary attribute would be set to “true” if only one booking channel is transferred. Only one source should be marked “true” if multiple sources are sent.
OTA_ResRetrieveRS / ReservationsList / HotelReservation / POS / Source / BookingChannel / CompanyName	0..1	The name of the booking source.
@Code	0..1	Code is Optional and can be used to transfer the code of the Booking channel if such code is a recognized industry standard – the name, however, should always be sent as well as the code.
OTA_ResRetrieveRS / ReservationsList / HotelReservation / UniqueID	1	The unique ID depends on the system generating the booking; i.e., if the booking is generated by the PMS this field would contain the PMS confirmation number; if the system is a CRS, the CRS confirmation number. The Unique ID generated by the system originating the booking must be carried through to the final receiver of the booking (generally the PMS) to ensure that the client can use the same confirmation number whether he/she deals with the web site originating the booking or the central reservation office of the hotel or the property itself.
@Type	1	Type is assigned codes from the UIT (Unique ID Type) code list. If the originator is a CRS, the recommended value for this message is 14 – Reservation. If the originator is a PMS, the recommended value for this message would be 10 – Hotel.
@ID	1	ID is the actual confirmation number.

Element @Attribute	Num	Description/Contents
OTA_ResRetrieveRS / ReservationsList / HotelReservation / RoomStays / RoomStay	1	Only one instance of RoomStay is allowed,
@MarketCode	0..1	This is the code that relates to the market being sold and may be needed by the PMS for tracking purposes.
@SourceOfBusiness	0..1	Used to specify where the business came from; e.g., radio, newspaper ad, or it could be a referring property.
@PromotionCode	0..1	This is the promotion code indicating, for instance, a specific marketing campaign – not the rate code.
OTA_ResRetrieveRS / ReservationsList / HotelReservation / RoomStays / RoomStay / RatePlans /	0..1	The RatePlans element is not required but can be sent to give further details on the rates booked in this reservation.
OTA_ResRetrieveRS / ReservationsList / HotelReservation / RoomStays / RoomStay / RatePlans / RatePlan	1	The RatePlan to be booked.
@RatePlanCode	1	This is the code of the rate booked.
OTA_ResRetrieveRS / ReservationsList / HotelReservation / RoomStays / RoomStay / RatePlans / RatePlan / RatePlanInclusions	1	Defines charges that are included in this rate plan.
@TaxInclusive	1	Boolean. Defines if the rate booked is tax inclusive or not.
OTA_ResRetrieveRS / ReservationsList / HotelReservation / RoomStays / RoomStay / RatePlans / RatePlan / MealsIncluded	0..1	Defines which meals are included with this rate program.
@MealPlanIndicator	1	Boolean. If the meal plan is included in the rate value, this value must be set to true. If this value is false, then MealPlanCodes must be blank.
@MealPlanCodes	1	Comma separated string of OpenTravel Alliance meal plan codes (MPT) that apply to the reservation. Although multiple meal plans are allowed, those systems handling only a single meal plan should use the first value in the string. A blank string indicates the removal of any meal plan codes that may already exist.

Element @Attribute	Num	Description/Contents
OTA_ResRetrieveRS / ReservationsList / HotelReservation / RoomStays / RoomStay / RoomRates / RoomRate	1..n	One instance of RoomRate per room/rate booked. If more than one Rate plan can be booked in one reservation the entire RoomRate element must be repeated for each Room/rate combination. In addition, all RoomRate elements MUST share the same RoomTypeCode.
@RatePlanCategory	0..1	This is the category or segment to which the rate being booked belongs.
@RoomTypeCode	1	This is the room type code booked in the reservation.
@InvBlockCode	0..1	If the room booked is part of a block the block code or suitable default string agreed by the implementing partners should be transferred in this field.
@NumberOfUnits	1	This is the number of rooms booked for the room type code listed in the RoomTypeCode attribute. In the case of shared reservations, this value will always be "1".
@RatePlanCode	1	This is the rate booked for the room type code listed in the RoomTypeCode attribute.
OTA_ResRetrieveRS / ReservationsList / HotelReservation / RoomRates / RoomRate / Rates / Rate	1..n	At least one instance of Rate per Rate plan. Multiple instances of the Rate element must be sent if rate changes apply to the booking.
@RateTimeUnit	1	Rate Time unit is an Enumeration of time units upon which the rate amount is based (e.g., daily, weekly, single rate for full stay).
@EffectiveDate	1	The Effective date attribute indicates the starting date of when a specific rate value is applied. This is needed when during the stay there are some rate changes and therefore one instance of when the Base element applies to part of the stay and another instance of when the Base element applies to another part of the stay. The effective date here refers to the Base that is passed in this instance of Rate element.
@ExpireDate	1	The Expire date indicates the day when the specific value of the rate is changed to another value.
@UnitMultiplier	1	UnitMultiplier is the number of RateTimeUnits upon which the rate amount is based (e.g., rate for one day in case of nightly rates).
OTA_ResRetrieveRS / ReservationsList / HotelReservation / RoomRates / RoomRate / Rates / Rate / Base	1	Mandatory in both OpenTravel Alliance and HTNG if an instance of RoomRate is passed.

Element @Attribute	Num	Description/Contents
@CurrencyCode	1	CurrencyCode used ISO 4217 codes to indicate the currency of the rate that is being booked.
@AmountBeforeTax	0	AmountBeforeTax if available can be sent for each @NumberOfGuests.
@AmountAfterTax	1	AmountAfterTax is Mandatory for each @NumberOfGuests.
OTA_ResRetrieveRS / ReservationsList / HotelReservation / RoomStays / RoomStay / RoomRates / RoomRate / Rates / Rate / Base / Taxes	0..1	A collection of taxes.
@Amount	0..1	Total Amount of Taxes applied to the booking.
@CurrencyCode	0..1	Currency of the total Amount of Taxes.
OTA_ResRetrieveRS / ReservationsList / HotelReservation / RoomStays / RoomStay / RoomRates / RoomRate / Rates / Rate / Base / Taxes / Tax	0..99	An individual tax.
@Type	0..1	The Type attribute is an enumeration to indicate whether the tax is “inclusive”, “exclusive” or “cumulative”.
@Code	0..1	The Code attribute refers to OpenTravel Alliance list FTT (fee tax type) and is used to indicate the specific tax or fee that is being transferred.
@Amount	0..1	Amount of the specific tax/fee transferred.
@CurrencyCode	0..1	Currency for the Amount of the specific tax/fee transferred.
OTA_ResRetrieveRS / ReservationsList / HotelReservation / RoomStays / RoomStay / GuestCounts	1	Contains the guest counts of the booking.
@IsPerRoom	0..1	Indicates that the guest count provided is on a per room basis.
OTA_ResRetrieveRS / ReservationsList / HotelReservation / RoomStays / RoomStay / GuestCounts / GuestCount	1..n	Contains the type and number of guests included in the reservation.
@AgeQualifyingCode	1	The two codes used from the OpenTravel Alliance AQC code list are: 8–Child, 10–Adult.

Element @Attribute	Num	Description/Contents
@Count	1	Count will include the number and will be repeated for each Type of guest.
@AgeBucket	0..1	This value may be included to identify the age bucket to which the GuestCount corresponds. If this is included, count will indicate the number of guests for this age bucket.
@Age	0..1	Defines the age of a guest.
OTA_ResRetrieveRS / ReservationsList / HotelReservation / RoomStays / RoomStay / TimeSpan	1	These are the in and out date of the booking.
@Start	1	Check in date.
@End	1	Check out date.
OTA_ResRetrieveRS / ReservationsList / HotelReservation / RoomStays / RoomStay / Guarantee	0..5	Guarantee provided with the reservation.
@GuaranteeType	1	This is the attribute that indicates what guarantee is provided with the reservation. The enumerated values can be: "GuaranteeRequired" "None" "CC / DC / Voucher" "Profile" "Deposit" "PrePay"
@GuaranteeCode	0..1	This is the guarantee code used in the CRS.
OTA_ResRetrieveRS / ReservationsList / HotelReservation / RoomStays / RoomStay / Guarantee / GuaranteesAccepted / GuaranteeAccepted / PaymentCard	1	Details of a debit or credit card.
@SecureInd	0..1	Secure data indicator.
@CardCode	0..1	The Card code is the 2-letter code indicative of the card (VS, MC, AX, etc.).
@ExpireDate	0..1	Mandatory if credit card guarantee info is passed. This is the expiry date of the credit card used as guarantee.

Element @Attribute	Num	Description/Contents
@SeriesCode	0..1	The SeriesCode attribute is used (Optionally) for the security number of the card.
OTA_ResRetrieveRS / ReservationsList / HotelReservation / RoomStays / RoomStay / Guarantee / GuaranteesAccepted / GuaranteeAccepted / PaymentCard / CardHolderName	0..1	Mandatory if credit card guarantee info is passed. This is the name of the card holder. If the system transmitting the info does not hold the cc holder name, it should not be passed rather than passing incorrect details.
OTA_ResRetrieveRS / ReservationsList / HotelReservation / RoomStays / RoomStay / Guarantee / GuaranteesAccepted / GuaranteeAccepted / PaymentCard / CardNumber	0..1	Credit card number embossed on the card.
@Token	0..1	Tokenized information.
@TokenProvider	0..1	Provider ID.
@Mask	0..1	Masked data.
OTA_ResRetrieveRS / ReservationsList / HotelReservation / RoomStays / RoomStay / Guarantee / GuaranteeDescription / Text	0..1	Optional. This can be used to pass the details of the guarantee if the guarantee used is not cc or deposit.
@Name	0..1	Used in conjunction with Text element above. Name could be used to indicate Voucher and the Text could be used to indicate the voucher number, for instance.
OTA_ResRetrieveRS / ReservationsList / HotelReservation / RoomStays / RoomStay / DepositPayments / GuaranteePayment / AcceptedPayments / AcceptedPayment	0..n	Used if deposit or prepayment information is transferred with the booking. All fields below this path are only Mandatory IF the element is used at all.
@PaymentTransactionTypeCode	1	Mandatory if anything is passed in the AcceptedPayment element. This is an enumeration that indicates whether we are talking about a deposit or a prepayment. The two options are: charge (prepayment) or reserve (deposit). Would be Optional in the schema.

Element @Attribute	Num	Description/Contents
OTA_ResRetrieveRS / ReservationsList / HotelReservation / RoomStays / RoomStay / DepositPayments / GuaranteePayment / AcceptedPayments / AcceptedPayment / PaymentCard	1	Mandatory if an instance of AcceptedPayment is passed and no other sub-element is used. This is the card to which the deposit or prepayment for the booking must be charged.
@SecureInd	0..1	Secure data indicator.
@CardCode	0..1	The Card code is the 2-letter code indicative of the card (VS, MC, AX, etc.).
@ExpireDate	0..1	Mandatory if credit card guarantee info is passed. This is the expiry date of the credit card used as guarantee.
@SeriesCode	0..1	The SeriesCode attribute is used (Optionally) for the security number of the card.
OTA_ResRetrieveRS / ReservationsList / HotelReservation / RoomStays / RoomStay / DepositPayments / GuaranteePayment / AcceptedPayments / AcceptedPayment / PaymentCard / CardHolderName	0..1	Mandatory if credit card guarantee info is passed. This is the name of the card holder. If the system transmitting the info does not hold the cc holder name, it should not be passed rather than passing incorrect details.
OTA_ResRetrieveRS / ReservationsList / HotelReservation / RoomStays / RoomStay / DepositPayments / GuaranteePayment / AcceptedPayments / AcceptedPayment / PaymentCard / CardNumber	0..1	Credit card number embossed on the card.
@Token	0..1	Tokenized information.
@TokenProvider	0..1	Provider ID.
@MaskedCardNumber	0..1	Masked data.
OTA_ResRetrieveRS / ReservationsList / HotelReservation / RoomStays / RoomStay / DepositPayments / GuaranteePayment / AmountPercent	1	Mandatory if something is passed in the DepositPayment element. In this case, the amount must be specified.

Element @Attribute	Num	Description/Contents
@Amount	0..1	This is the amount charged as a deposit for the booking. At least one between Amount, Percent and NumberOfNights must be transferred.
@CurrencyCode	0..1	Currency used. Should be sent in conjunction with Amount.
@Percent	0..1	This is the percentage charged as a deposit for the booking. At least one between Amount, Percent and NumberOfNights must be transferred.
@NumberOfNights	0..1	This is the Number of nights charged as a deposit for the booking. At least one between Amount, Percent and NumberOfNights must be transferred.
OTA_ResRetrieveRS / ReservationsList / HotelReservation / RoomStays / RoomStay / DepositPayments / GuaranteePayment / Deadline	0..1	Indicates when the deposit is due if not at the time of booking.
@AbsoluteDeadline	0..1	Used as per OpenTravel Alliance schema.
@OffsetTimeUnit	0..1	Used as per OpenTravel Alliance schema.
@OffsetUnitMultiplier	0..1	Used as per OpenTravel Alliance schema.
@OffsetDropTime	0..1	Used as per OpenTravel Alliance schema.
OTA_ResRetrieveRS / ReservationsList / HotelReservation / RoomStays / RoomStay / DepositPayments / GuaranteePayment / AcceptedPayments / AcceptedPayment / DirectBill	1	Mandatory if an instance of AcceptedPayment is passed and no other sub-element is used. This is the direct bill information for the booking.
@DirectBillID	0..1	Identifier for the organization to be billed directly for travel services.
OTA_ResRetrieveRS / ReservationsList / HotelReservation / RoomStays / RoomStay / DepositPayments / GuaranteePayment / AcceptedPayments / AcceptedPayment / Voucher	1	Mandatory if an instance of AcceptedPayment is passed and no other sub-element is used. This is the voucher information for the booking.
@SeriesCode	0..1	Identification of a series of coupons or vouchers identified by serial number(s).

Element @Attribute	Num	Description/Contents
OTA_ResRetrieveRS / ReservationsList / HotelReservation / RoomStays / RoomStay / Total	0..1	This is the total amount for the stay.
@CurrencyCode	1	CurrencyCode used ISO 4217 codes to indicate the currency of the total rate.
@AmountBeforeTax OR @AmountAfterTax	1	Either @AmountBeforeTax or AmountAfterTax is Mandatory for each @NumberOfGuests. Partners must select whether to send either the @AmountBeforeTax or @AmountAfterTax (or both) attributes.
OTA_ResRetrieveRS / ReservationsList / HotelReservation / RoomStays / RoomStay / Total / Taxes	0..1	Optional. Can be used for Total Pricing.
@Amount	0..1	Total Amount of Taxes applied to the booking.
@CurrencyCode	0..1	Currency of the total Amount of Taxes.
OTA_ResRetrieveRS / ReservationsList / HotelReservation / RoomStays / RoomStay / Total / Taxes / Tax	0..99	Optional. Can be used for Total Pricing.
@Type	0..1	The Type attribute is an enumeration to indicate whether the tax is "inclusive", "exclusive" or "cumulative".
@Code	0..1	The Code attribute refers to OpenTravel Alliance list FTT (fee tax type) and is used to indicate the specific tax or fee that is being transferred.
@Amount	0..1	Amount of the specific tax/fee transferred.
@CurrencyCode	0..1	Currency for the Amount of the specific tax/fee transferred.
OTA_ResRetrieveRS / ReservationsList / HotelReservation / RoomStays / RoomStay / BasicPropertyInfo	1	Property Information for the Room Stay.
@HotelCode	1	This is the property for which the reservations are being transferred.
@ChainCode	0..1	ChainCode indicates the chain to which the property belongs.
@BrandCode	0..1	BrandCode indicates the Brand within the Chain to which the property belongs.

Element @Attribute	Num	Description/Contents
OTA_ResRetrieveRS / ReservationsList / HotelReservation / RoomStays / RoomStay / ResGuestRPHs / ResGuestRPH /	1..n	A reference placeholder used as an index identifying which guests occupy this room.
@RPH	1	This is used to link the various profiles to the reservation.
OTA_ResRetrieveRS / ReservationsList / HotelReservation / RoomStays / RoomStay / Memberships / Membership	0..n	The element Membership is Optional but both attributes would need to be Mandatory.
@ProgramCode	1	The loyalty program to which the account ID belongs.
@AccountID	1	The account that needs to be credited with points for the stay booked.
OTA_ResRetrieveRS / ReservationsList / HotelReservation / RoomStays / RoomStay / Comments / Comment	1	Comment details.
@Name	0..1	Allows types of Comments to be differentiated. Valid values would be determined by Trader-Partners
@GuestViewable	0	This indicates that the comment can actually be seen by the guest and is necessary when two different types of comments are passed: one that is guest viewable and one that isn't. The Attribute is of Boolean nature.
OTA_ResRetrieveRS / ReservationsList / HotelReservation / RoomStays / RoomStay / Comments / Comment / Text	1	Comments.
OTA_ResRetrieveRS / ReservationsList / HotelReservation / RoomStays / RoomStay / SpecialRequests / SpecialRequest /	0..n	The SpecialRequest object indicates special requests for a particular guest, service or reservation. Each of these may be independent of any that are tied to the profile.
@RequestCode	1	Indicates the special requests associated to the reservation. If a special request is passed it must be passed with the RequestCode attribute, which is therefore conditionally Mandatory. If no code is available the partners should agree on a code to be transferred in conjunction with the TEXT element below.

Element @Attribute	Num	Description/Contents
@CodeContext	0..1	If the system sending the information differentiates the request codes in various groups (for instance, room features <i>versus</i> special requests, etc.), the context of the code should be sent to indicate whether the request sent is indeed a room feature or a special request or belongs to any other grouping. Must be agreed upon implementing partners based on the functionality of the systems involved.
OTA_ResRetrieveRS / ReservationsList / HotelReservation / RoomStays / RoomStay / SpecialRequests / SpecialRequest / Text	0..1	Provides more information about the request code or provides description for requests that are yet uncoded.
OTA_ResRetrieveRS / ReservationsList / HotelReservation / BillingInstructionCode	0..n	Billing codes that apply to a set of instructions for a set of transactions that are routed to a designated folio.
OTA_ResRetrieveRS / ReservationsList / HotelReservation / BillingInstructionCode / BillingCode	1	The individual billing code that applies to a set of instructions that are routed to a designated folio.
OTA_ResRetrieveRS / ReservationsList / HotelReservation / BillingInstructionCode / BillingType	0..1	Used to define the type of the BillingCode, such as group, corporate and casino. Refer to OpenTravel Code List Reservation Billing Type (RBT).
OTA_ResRetrieveRS / ReservationsList / HotelReservation / BillingInstructionCode / AuthorizationCode	0..1	The authorization code associated with the billing code.
OTA_ResRetrieveRS / ReservationsList / HotelReservation / BillingInstructionCode / Description	0..1	A short description of the billing code or instructions.
OTA_ResRetrieveRS / ReservationsList / HotelReservation / BillingInstructionCode / Start	0..1	The starting value of the time span.

Element @Attribute	Num	Description/Contents
OTA_ResRetrieveRS / ReservationsList / HotelReservation / BillingInstructionCode / End	0..1	The ending value of the time span.
OTA_ResRetrieveRS / ReservationsList / HotelReservation / BillingInstructionCode / AccountNumber	0..1	Identifies the account number where the charges will be routed.
OTA_ResRetrieveRS / ReservationsList / HotelReservation / BillingInstructionCode / ResGuestRPH	0..n	A reference to a guest ID object that may be defined in ResGuests/ResGuest.
@RPH	1	A unique reference to the guest ID.
OTA_ResRetrieveRS / ReservationsList / HotelReservation / ResGuests / ResGuest /	1..n	The ResGuest object contains the information about a guest associated with a reservation.
@ResGuestRPH	1	For simple reservations: If profiles for guest, travel agency and company are available, they would all be linked to a single ResGuestRPH. A comment has been entered with OpenTravel Alliance for phase 2 to accomodate more complex scenarios.
@PrimaryIndicator	0..1	New attribute in OpenTravel Alliance 2007A. This indicates the primary guest on a reservation. In the case of multiple guests on a reservation, the guest responsible for payment, etc. will be marked true. Currently Optional in OpenTravel Alliance schema but needs to be Mandatory to support passing of multiple guests on a reservation (Additional Profile).
OTA_ResRetrieveRS / ReservationsList / HotelReservation / ResGuests / ResGuest / Profiles / ProfileInfo / UniqueID	0..9	Used to allow additional IDs for matching purposes.
@Type	1	The Type attribute refers to OpenTravel Alliance code type UIT and the choices recommended by HTNG should be: 1 - Customer 4 - Company 5 - Travel Agency
@ID	1	The actual ID.

Element @Attribute	Num	Description/Contents
@ID_Context	0..1	ID_Context is Optional and would be used to identify the source of the ID (for instance, for a Travel agency ID we could have IATA or ABTA, etc.).
OTA_ResRetrieveRS / ReservationsList / HotelReservation / ResGuests / ResGuest / Profiles / ProfileInfo / UniqueID / CompanyName	0..1	Further identifier.
@CodeContext	1	Identifies the context of the identifying code, such as DUNS, IATA or internal code, etc.
@Code	1	Identifies a company by the company code.
OTA_ResRetrieveRS / ReservationsList / HotelReservation / ResGuests / ResGuest / Profiles / ProfileInfo / Profile	1..n	Provides detailed information regarding either a company or a customer profile.
@ProfileType	1	This is used to pass the profile info for the guest, the Company and the Travel agency. For the individual guest the code used in ProfileType is the OpenTravel Alliance PRT Code 1 – [Customer], For a company it is PRT Code 3 [Corporation]. For a travel agency it is PRT Code 4 – [Travel agent].
@ShareAllOptOutInd	0..1	When yes, a customer has explicitly opted out of marketing communication. This is used in combination with the ShareAllMarketInd and only one of these attributes should have a value of yes.
@ShareAllMarketInd	0..1	Permission for sharing all data in profile for marketing purposes. A yes value indicates that the customer has chosen to opt-in to marketing communication. This is used in combination with the ShareAllOptOutInd and only one of these attributes should have a value of yes.
OTA_ResRetrieveRS / ReservationsList / HotelReservation / ResGuests / ResGuest / Profiles / ProfileInfo / Profile / Customer	1	Customer.
@VIP_Indicator	0..1	If true, indicates a very important person.
@Birthdate	0..1	The customer's birthday information.

Element @Attribute	Num	Description/Contents
OTA_ResRetrieveRS / ReservationsList / HotelReservation / ResGuests / ResGuest / Profiles / ProfileInfo / Profile / Customer / PersonName	0..5	Detailed name information for the customer.
@Language	0..1	The language code for which the name data is represented. While this value is optional, it is HIGHLY RECOMMENDED that it be used.
@NameType	0..1	Former, Nickname, Alternate, etc.
OTA_ResRetrieveRS / ReservationsList / HotelReservation / ResGuests / ResGuest / Profiles / ProfileInfo / Profile / Customer / PersonName / NamePrefix	0..1	Optional but should be highly recommended by HTNG that partners use it if possible. This path is used to transmit the Customer details. Details of the company or Travel agency use a different path. This field would be used to pass the guest's name Prefix.
OTA_ResRetrieveRS / ReservationsList / HotelReservation / ResGuests / ResGuest / Profiles / ProfileInfo / Profile / Customer / PersonName / GivenName	0..1	Optional. This path is used to transmit the Customer details. Details of the company or Travel agency use a different path. This field would be used to pass the guest's First name.
OTA_ResRetrieveRS / ReservationsList / HotelReservation / ResGuests / ResGuest / Profiles / ProfileInfo / Profile / Customer / PersonName / MiddleName	0..1	Optional. This path is used to transmit the Customer details. Details of the company or Travel agency use a different path. This field would be used to pass the guest's Middle name.
OTA_ResRetrieveRS / ReservationsList / HotelReservation / ResGuests / ResGuest / Profiles / ProfileInfo / Profile / Customer / PersonName / Surname	1	Mandatory if a guest profile is passed. This path is used to transmit the Customer details. Details of the company or Travel agency use a different path. This field would be used to pass the guest's Surname.
OTA_ResRetrieveRS / ReservationsList / HotelReservation / ResGuests / ResGuest / Profiles / ProfileInfo / Profile / Customer / PersonName / NameSuffix	0..1	Optional. This field would be used to pass the guest's suffix.

Element @Attribute	Num	Description/Contents
OTA_ResRetrieveRS / ReservationsList / HotelReservation / ResGuests / ResGuest / Profiles / ProfileInfo / Profile / Customer / Telephone	1..n	Mandatory if a guest profile is passed. This path is used to transmit the Customer details. Details of the company or Travel agency use a different path. This field would be used to pass the guest's phone numbers and fax number.
@PhoneLocationType	0..1	The PhoneLocationType attribute refers to the OpenTravel Alliance PLT code list and indicates where the phone number is based – the values to be used by HTNG are: 6 – Home, 7 – Office, 8 – Other (e.g., cell phone).
@PhoneTechType	0..1	The PhoneTechType attribute refers to the OpenTravel Alliance PTT code list and indicates which type of number is transmitted (phone <i>versus</i> fax). The codes to be used by HTNG are: code 1 – Voice code 3 – Fax code 5 – Mobile
@Phone Number	1	PhoneNumber contains the actual number as a string of max 32 characters and it is Mandatory.
@CountryAccessCode	0..1	Code assigned by telecommunications authorities for international country access identifier.
@Area City Code	0..1	Code assigned for telephones in a specific region, city or area.
@FormattedInd	1	FormattedInd is Mandatory. If the partner can use Country and Area codes then it should be set to NO. If country code and area code are passed then they should not appear again in the PhoneNumber field. If the partner cannot use country and area code then entire number is passed in the PhoneNumber field and FormattedInd. It should be set to YES if the number needs to be parsed as there is a separation of the different parts or set to NO to indicate that the PhoneNumber field contains the entire phone number without a specific format.
@DefaultInd	0..1	DefaultInd is Optional and would indicate whether the phone number is the primary phone number for the profile.
OTA_ResRetrieveRS / ReservationsList / HotelReservation / ResGuests / ResGuest / Profiles / ProfileInfo / Profile / Customer / Email	0..5	This path is used to transmit the Customer details. Details of the company or Travel agency use a different path. This field would be used to pass the guest's email address.

Element @Attribute	Num	Description/Contents
@EmailType	0..1	The Email Type attribute uses the OpenTravel Alliance code list EAT and indicates the type of email address provided (Personal – code 1 <i>versus</i> Business – code 2, in the case of the Guest details) and must be passed if more than one email address is passed. If only one email address is passed it can be Optional.
@DefaultInd	0..1	DefaultInd is Optional and would indicate whether the email is the primary email for the profile.
OTA_ResRetrieveRS / ReservationsList / HotelReservation / ResGuests / ResGuest / Profiles / ProfileInfo / Profile / Customer / Address	0..5	This path is used to transmit the Customer details. Details of the company or Travel agency use a different path. This field would be used to pass the guest's mail address.
@Type	1	The Type attribute uses the OpenTravel Alliance code list CLT and indicates the type of address provided (Home – code 1 <i>versus</i> Business – code 2 or Other – code 3, in the case of the Guest details) and must be passed if an address is passed.
OTA_ResRetrieveRS / ReservationsList / HotelReservation / ResGuests / ResGuest / Profiles / ProfileInfo / Profile / Customer / Address / AddressLine	0..5	This path is used to transmit the Customer details. Details of the company or Travel agency use a different path. This field would be used to pass the guest's address. More than one line can be sent.
OTA_ResRetrieveRS / ReservationsList / HotelReservation / ResGuests / ResGuest / Profiles / ProfileInfo / Profile / Customer / Address / CityName	0..1	This path is used to transmit the Customer details. Details of the company or Travel agency use a different path. This field would be used to pass the guest's city.
OTA_ResRetrieveRS / ReservationsList / HotelReservation / ResGuests / ResGuest / Profiles / ProfileInfo / Profile / Customer / Address / StateProv	0..1	This path is used to transmit the Customer details. Details of the company or Travel agency use a different path. This field would be used to pass the guest's State.
@StateCode	0..1	State expressed in the Standard 2–8 characters code.

Element @Attribute	Num	Description/Contents
OTA_ResRetrieveRS / ReservationsList / HotelReservation / ResGuests / ResGuest / Profiles / ProfileInfo / Profile / Customer / Address / PostalCode	0..1	This path is used to transmit the Customer details. Details of the company or Travel agency use a different path. This field would be used to pass the guest's Postal / ZIP code.
OTA_ResRetrieveRS / ReservationsList / HotelReservation / ResGuests / ResGuest / Profiles / ProfileInfo / Profile / Customer / Address / CountryName	0..1	This path is used to transmit the Customer details. Details of the company or Travel agency use a different path. This field would be used to pass the guest's Country.
@Code	0..1	Country expressed in the Standard ISO 3166 code.
OTA_ResRetrieveRS / ReservationsList / HotelReservation / ResGuests / ResGuest / Profiles / ProfileInfo / Profile / Customer / CustLoyalty	0..5	Optional. This path enables the user to pass specific IDs linked to the guest profile.
@ProgramID	0..1	The ProgramID attribute can be used to indicate the program that is being passed. For instance, we could use it to pass: Frequent Guest, Frequent Traveller and Company ID.
@MembershipID	0..1	The membershipID attribute will indicate the actual number.
@LoyalLevel	0..1	Indicates special privileges in program assigned to individual.
@EffectiveDate	0..1	Indicates the starting date of the program.
@ExpireDate	0..1	Indicates the expiration date of the program.
@SignupDate	0..1	Indicates the customer's sign-up date.
OTA_ResRetrieveRS / ReservationsList / HotelReservation / ResGuests / ResGuest / Profiles / ProfileInfo / Profile / Customer / RelatedTraveler	0..9	Optional. This path is used to transmit the Accompanying Guest details.
@Relation	0..1	Indicates the type of relationship with the person in the profile, such as Spouse, Child, Family, Business Associate, Interest Group, Medical, Security, Other, etc.
@Birthdate	0..1	The related traveler's birthday information.

Element @Attribute	Num	Description/Contents
OTA_ResRetrieveRS / ReservationsList / HotelReservation / ResGuests / ResGuest / Profiles / ProfileInfo / Profile / Customer / RelatedTraveler / PersonName	0..5	Detailed name information for the related traveler.
@Language	0..1	The language code for which the name data is represented. While this value is optional, it is HIGHLY RECOMMENDED that it be used.
@NameType	0..1	Former, Nickname, Alternate, etc.
OTA_ResRetrieveRS / ReservationsList / HotelReservation / ResGuests / ResGuest / Profiles / ProfileInfo / Profile / Customer / RelatedTraveler / PersonName / NamePrefix	0..1	Optional. This path is used to transmit the Accompanying Guest details. This field would be used to pass the guest's name Prefix.
OTA_ResRetrieveRS / ReservationsList / HotelReservation / ResGuests / ResGuest / Profiles / ProfileInfo / Profile / Customer / RelatedTraveler / PersonName / GivenName	0..1	Optional. This path is used to transmit the Accompanying Guest details. This field would be used to pass the guest's First name.
OTA_ResRetrieveRS / ReservationsList / HotelReservation / ResGuests / ResGuest / Profiles / ProfileInfo / Profile / Customer / RelatedTraveler / PersonName / MiddleName	0..1	Optional. This path is used to transmit the Accompanying Guest details. This field would be used to pass the guest's Middle name.
OTA_ResRetrieveRS / ReservationsList / HotelReservation / ResGuests / ResGuest / Profiles / ProfileInfo / Profile / Customer / RelatedTraveler / PersonName / Surname	1	Mandatory if an accompanying traveler profile is passed. This path is used to transmit the Accompanying Guest details. This field would be used to pass the guest's Surname.

Element @Attribute	Num	Description/Contents
OTA_ResRetrieveRS / ReservationsList / HotelReservation / ResGuests / ResGuest / Profiles / ProfileInfo / Profile / Customer / RelatedTraveler / PersonName / NameSuffix	0..1	Optional. This field would be used to pass the accompanying traveler's suffix.
OTA_ResRetrieveRS / ReservationsList / HotelReservation / ResGuests / ResGuest / Profiles / ProfileInfo / Profile / CompanyInfo / CompanyName	0..1	Detailed name information for the company.
@Code	0..1	Identifies a company by the company code.
OTA_ResRetrieveRS / ReservationsList / HotelReservation / ResGuests / ResGuest / Profiles / ProfileInfo / Profile / CompanyInfo / AddressInfo / AddressLine	0..5	Mandatory if a company or travel agency profile is passed. Address line is repeatable up to 5 times. This path is used to transmit the details for a Company or Travel agency profile. This element is used to pass the Company or Travel Agency's address. Type attribute is not needed here as it is clearly a business address.
OTA_ResRetrieveRS / ReservationsList / HotelReservation / ResGuests / ResGuest / Profiles / ProfileInfo / Profile / CompanyInfo / AddressInfo / CityName	0..1	This path is used to transmit the details for a Company or Travel agency profile. This element is used to pass the Company or Travel Agency's City.
OTA_ResRetrieveRS / ReservationsList / HotelReservation / ResGuests / ResGuest / Profiles / ProfileInfo / Profile / CompanyInfo / AddressInfo / StateProv	0..1	This path is used to transmit the details for a Company or Travel agency profile. This element is used to pass the Company or Travel Agency's State.
@StateCode	0..1	State expressed in the Standard 2-8 characters code.
OTA_ResRetrieveRS / ReservationsList / HotelReservation / ResGuests / ResGuest / Profiles / ProfileInfo / Profile / CompanyInfo / AddressInfo / PostalCode	0..1	This path is used to transmit the details for a Company or Travel agency profile. This element is used to pass the Company or Travel Agency's postal or ZIP code.

Element @Attribute	Num	Description/Contents
OTA_ResRetrieveRS / ReservationsList / HotelReservation / ResGuests / ResGuest / Profiles / ProfileInfo / Profile / CompanyInfo / AddressInfo / CountryName	0..1	Optional. This path is used to transmit the details for a Company or Travel agency profile. This element is used to pass the Company or Travel Agency's Country.
@Code	0..1	Country expressed in the Standard ISO 3166 codes.
OTA_ResRetrieveRS / ReservationsList / HotelReservation / ResGuests / ResGuest / Profiles / ProfileInfo / Profile / CompanyInfo / TelephoneInfo	1..n	Mandatory if a company or travel agency profile is passed. This element is used to pass the Company or Travel Agency's phone and numbers. PhoneLocationType is not needed here as this is an office telephone.
@PhoneTechType	0..1	The PhoneTechType attribute refers to the OpenTravel Alliance PTT code list and indicates which type of number is transmitted (phone <i>versus</i> fax). The codes to be used by HTNG are: Code 1 – Voice Code 3 – Fax Code 5 – Mobile
@Phone Number	1	PhoneNumber contains the actual number as a string of max 32 characters and it is Mandatory.
@CountryAccessCode	0..1	Code assigned by telecommunications authorities for international country access identifier.
@Area City Code	0..1	Code assigned for telephones in a specific region, city or area.
@FormattedInd	1	FormattedInd is Mandatory. If the partner can use Country and Area codes then it should be set to NO. If country code and area code are passed then they should not appear again in the PhoneNumber field. If the partner cannot use country and area code then the entire number is passed in the PhoneNumber field and FormattedInd. It should be set to YES if the number needs to be parsed as there is a separation of the different parts or set to NO to indicate that the PhoneNumber field contains the entire phone number without a specific format.
@DefaultInd	0..1	DefaultInd would indicate whether the phone number is the primary phone number for the profile.

Element @Attribute	Num	Description/Contents
OTA_ResRetrieveRS / ReservationsList / HotelReservation / ResGuests / ResGuest / Profiles / ProfileInfo / Profile / CompanyInfo / Email	0..1	This path is used to transmit the details for a Company or Travel agency profile. This element is used to pass the Company or Travel Agency's email. EmailType attribute is not needed here as it is clearly a business address.
OTA_ResRetrieveRS / ReservationsList / HotelReservation / ResGuests / ResGuest / Profiles / ProfileInfo / Profile / TPA_Extensions	0..n	Could be used to pass additional Profile data upon agreement between partners (specific Keys or codes, for instance).
OTA_ResRetrieveRS / ReservationsList / HotelReservation / ResGuests / ResGuest / ArrivalTransport / TransportInfo	0..1	The 3 attributes below are used to indicate the arrival details for the guests to whom the booking pertains.
@Type	0..1	Type is used to indicate the method of conveyance of this guest. Values: Air, Rail, Bus, Boat, Private Auto, Other.
@ID	0..1	ID is the actual identifier of this transportation method (e.g., flight number).
@Time	0..1	Time is the estimated arrival time.
OTA_ResRetrieveRS / ReservationsList / HotelReservation / ResGuests / ResGuest / DepartureTransport / TransportInfo	0..1	The 3 attributes are used to indicate the departure details for the guests to whom the booking pertains.
@Type	0..1	Type is used to indicate the method of departure of this guest. Values: Air, Rail, Bus, Boat, Private Auto, Other.
@ID	0..1	ID is the actual identifier of this transportation method (e.g., flight number).
@Time	0..1	Time is the expected departure time.
OTA_ResRetrieveRS / ReservationsList / HotelReservation / ResGlobalInfo / HotelReservationIDs / HotelReservationID	0..n	The HotelReservationID element can be repeated multiple types to transfer: <ol style="list-style-type: none"> 1. The PNR number for the reservation assigned by the GDS. 2. The reservation number for reservations that are linked to this reservation as associated reservation either for guests travelling together, sharing a room or as part of an Itinerary.

Element @Attribute	Num	Description/Contents
@ResID_Type	1	<p>ResID_Type is assigned values from the UIT code list.</p> <p>10 – Reservation Server 13 – Internet Broker 14 – Reservation Broker 24 – Travel Agent PNR 25 – Associated reservation (travelling with) 26 – Associated itinerary reservation 27 – Associated shared reservation 34 – Master Itinerary</p> <p>For any other type of system the implementing partners should agree on the appropriate code from the OpenTravel Alliance UIT code list.</p>
@ResID_Value	1	<p>If HotelReservationID is passed to transfer the PNR, ResID_Value is the PNR passed by the GDS.</p> <p>If HotelReservationID is passed to transfer the associated reservations, ResID_Value would be the confirmation number of the reservation that is associated to the one that is being transferred.</p>
@ResID_Source	0..1	A unique identifier to indicate the source system which generated the ResID_Value.
@ForGuest	0	When 1 the confirmation number given to the guest. This number should be searchable by the destination.
OTA_ResRetrieveRS / ReservationsList / HotelReservation / Services	0..n	Collection of services.
OTA_ResRetrieveRS / ReservationsList / HotelReservation / Services / Service	1	A Service object represents a non-room product provided to guests. Service products may have associated inventory and charges.
@ServicePricingType	1	<p>An enumerated type that defines how a service is priced:</p> <ol style="list-style-type: none"> 1. Per stay 2. Per night 3. Per person per night 4. Per use
@ServiceInventoryCode	1	The representation of the specific service being reserved.
@Inclusive	1	Whether the price for this service is included in the room rate.

Element @Attribute	Num	Description/Contents
@Quantity	0..1	The number of tickets, rounds of golf, etc. Also serves as the number of persons when pricing class is per person or per person per night.
OTA_ResRetrieveRS / ReservationsList / HotelReservation / Services/ Service/ Price	0..99	The selling price of this service.
OTA_ResRetrieveRS / ReservationsList / HotelReservation / Services/ Service/ Price / Total	0..1	This is the total amount for the stay.
@CurrencyCode	1	CurrencyCode used ISO 4217 codes to indicate the currency of the total rate.
@AmountBeforeTax OR @AmountAfterTax	1	Either @AmountBeforeTax or AmountAfterTax is Mandatory for each @NumberOfGuests. Partners must select whether to send either the @AmountBeforeTax or @AmountAfterTax (or both) attributes.
OTA_ResRetrieveRS / ReservationsList / HotelReservation / Services/ Service/ Price / Total / Taxes	0..1	Optional. Can be used for Total Pricing.
@Amount	0..1	Total Amount of Taxes applied to the service.
@CurrencyCode	0..1	Currency of the total Amount of Taxes.
OTA_ResRetrieveRS / ReservationsList / HotelReservation / Services/ Service/ Price / Total / Taxes / Tax	0..99	Optional. Can be used for Total Pricing.
@Type	0..1	The Type attribute is an enumeration to indicate whether the tax is “inclusive”, “exclusive” or “cumulative”.
@Code	0..1	The Code attribute refers to OpenTravel Alliance list FTT (fee tax type) and is used to indicate the specific tax or fee that is being transferred.
@Amount	0..1	Amount of the specific tax/fee transferred.
@CurrencyCode	0..1	Currency for the Amount of the specific tax/fee transferred.

Element @Attribute	Num	Description/Contents
OTA_ResRetrieveRS / ReservationsList / HotelReservation / Services/ Service/ ServiceDetails	0..99	Details on the Service including Guest Counts, Time Span of this Service, pointers to Res Guests, guest Memberships, Comments and Special Requests pertaining to this particular Service and finally financial information related to the Service, including Guarantee, Deposit and Payment, and Cancellation Penalties.
OTA_ResRetrieveRS / ReservationsList / HotelReservation / Services/ Service/ ServiceDetails GuestCounts / GuestCount	0..1	Contains the type and number of guests included in the service request.
@AgeQualifyingCode	1	The 2 codes used from the OpenTravel Alliance AQC code list are: 8 – Child, 10 – Adult.
@Count	1	Count will include the number and will be repeated for each Type of guest.
@Age	0..1	Defines the age of a guest.
OTA_ResRetrieveRS / ReservationsList / HotelReservation / Services/ Service/ ServiceDetails/ TimeSpan	0..99	These are the in and out dates of the booking.
@Start	1	Service Start Date.
@End	1	Service End Date.
OTA_ResRetrieveRS / ReservationsList / HotelReservation / Services/ Service/ ServiceDetails/ Comments / Comment	1	Comment details.
@Name	0..1	Allows types of Comments to be differentiated.
@GuestViewable	1	This indicates that the comment can actually be seen by the guest and is necessary when two different types of comments are passed: one that is guest viewable and one that isn't. The Attribute is of Boolean nature.
OTA_ResRetrieveRS / ReservationsList / HotelReservation / Services/ Service/ ServiceDetails/ Comments / Comment / Text	1	Comments.

4.4 Process Reservation

4.4.1 Data Element Table – Process Reservation Request

Element @Attribute	Num	Description/Contents
OTA_NotifReportRQ	1	Root element of the message.
@EchoToken	0..1	As per OpenTravel Alliance Specifications.
@Version	1	Version is a mandatory attribute in OTA; therefore, it must remain Mandatory in HTNG in order to be able to use the same message.
@TimeStamp	1	Time of the transaction.
OTA_NotifReportRQ / Errors / Error	1..99	Mandatory ONLY if Success element is not sent. Only needed if RQ message was unsuccessful.
@Type	1	Mandatory in OTA. Refers to OpenTravel Alliance EWT list (error warning type).
@Code	0..1	Refers to OpenTravel Alliance list ERR. Should be used wherever possible.
@RecordID	0..1	If the receiving system is able to identify within a batch of reservations which reservation failed, the uniqueID of the rejected reservation should be reported here.
OTA_NotifReportRQ / Success	1	Mandatory if no Errors were sent. This is the annotation that the reservation batch was received successfully. It could be combined with warning messages if some of the reservations in the batch had issues.
OTA_NotifReportRQ / Warnings / Warning	0..99	Can be used in conjunction with Success message.
@Type	1	Refers to OpenTravel Alliance EWT list (error warning type).
@Code	0..1	Refers to OpenTravel Alliance list ERR. Should be used wherever possible.
@RecordID	0..1	If the receiving system is able to identify within a batch of reservations which reservation has a warning, the uniqueID of that reservation should be reported here.

4.4.2 Data Element Table – Process Reservation Response

Element @Attribute	Num	Description/Contents
OTA_NotifReportRS	1	Root element of the message.
@EchoToken	0..1	As per OpenTravel Alliance Specifications.
@Version	1	Version is a mandatory attribute in OTA; therefore, it must remain Mandatory in HTNG in order to be able to use the same message.
@TimeStamp	1	Time of the transaction.

Element @Attribute	Num	Description/Contents
OTA_NotifReportRS / Errors / Error	1..99	Mandatory ONLY if Success element is not sent. Only needed if RQ message was unsuccessful.
@Type	1	Mandatory in OTA. Refers to OpenTravel Alliance EWT list (error warning type).
@Code	0..1	Refers to OpenTravel Alliance list ERR. Should be used wherever possible.
@RecordID	0..1	If the receiving system is able to identify within a batch of reservations which reservation failed, the uniqueID of the rejected reservation should be reported here.
OTA_NotifReportRS / Success	1	Mandatory if no Errors were sent. This is the annotation that the reservation batch was received successfully. It could be combined with warning messages if some of the reservations in the batch had issues.
OTA_NotifReportRS / Warnings / Warning	0..99	Can be used in conjunction with Success message.
@Type	1	Refers to OpenTravel Alliance EWT list (error warning type).
@Code	0..1	Refers to OpenTravel Alliance list ERR. Should be used wherever possible.
@RecordID	0..1	If the receiving system is able to identify within a batch of reservations which reservation has a warning, the uniqueID of that reservation should be reported here.

5 Appendices

5.1 Glossary of Terms

For the purpose of this document the following terms have been defined as follows:

Term	Definition
Pending Reservation Requester	A system that has the need to obtain pending reservation information.
Pending Reservation Responder	A system that maintains pending reservation information.
Reservation Publisher	A system that maintains reservations and notifies Reservation Subscriber(s) of changes.
Reservation Subscriber	A system that requires notification of reservation changes as they occur in Reservation Publisher system.

5.2 Implementation Notes

5.2.1 Assigning Identifiers

The UniqueID element at the top of the message will contain the confirmation ID of the system sending the reservation. This identifier will be carried through to all other systems. Additional identifiers are added as needed in a ReservationID element at the bottom of the message. If known, the confirmation number given to the guest by the first reservation system will be marked as such using the ForGuest attribute.

5.2.2 Errors and Warnings Usage

The response messages have an option between sending a Success element with an optional collection of Warning elements or a collection of Error elements. It has been agreed that when the request message is not processed the response will only have error elements. When the message is processed then the Success element will be sent, along with any warnings indicating issues that did not prevent the processing. Please see [Error Handling Appendix](#) for more information.

5.2.3 Sending Share Reservations

Share reservations should be sent in separate HotelReservation elements. Please see the Appendices for more information.

5.2.4 Distinction between OTA_HotelResNotifRQ@ResStatus and OTA_HotelResNotifRQ / HotelReservations / HotelReservation@ResStatus

OTA_HotelResNotif/@ResStatus indicates the action to be performed by the message recipient (Commit, Modify, Cancel).

HotelReservation/@ResStatus indicates the status of the reservation. The chart below should assist in defining the valid conditions for sending both values.

@ResStatus	Commit	Modify	Cancel
Reserved	✓	✓	
Cancelled			✓
Waitlisted	✓	✓	
No-Show		✓	✓
In-house	✓	✓	
Checked-out		✓	

5.3 Referenced Documents

The following table shows the documents upon which this document depends:

Document Title	Location/URL
Other HTNG Product Distribution specifications	Outline of most recent versions available on workgroup's wiki page
OpenTravel Alliance Specifications	http://www.opentravel.org/specifications