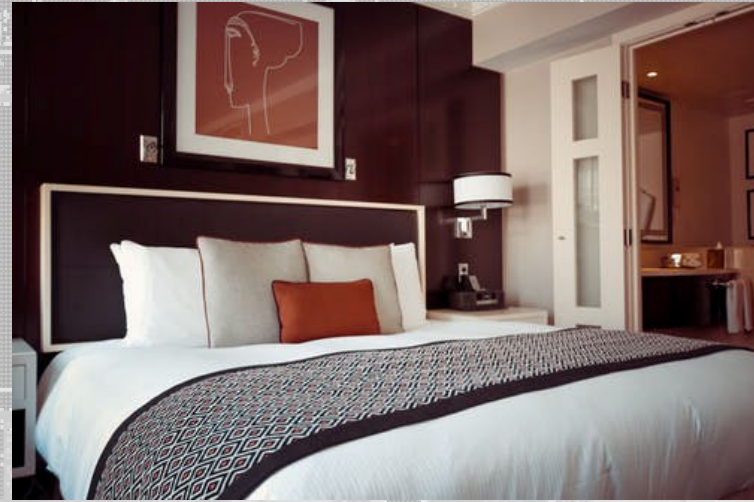


HOTEL TO HEALTHCARE CONCEPT (H2HC)

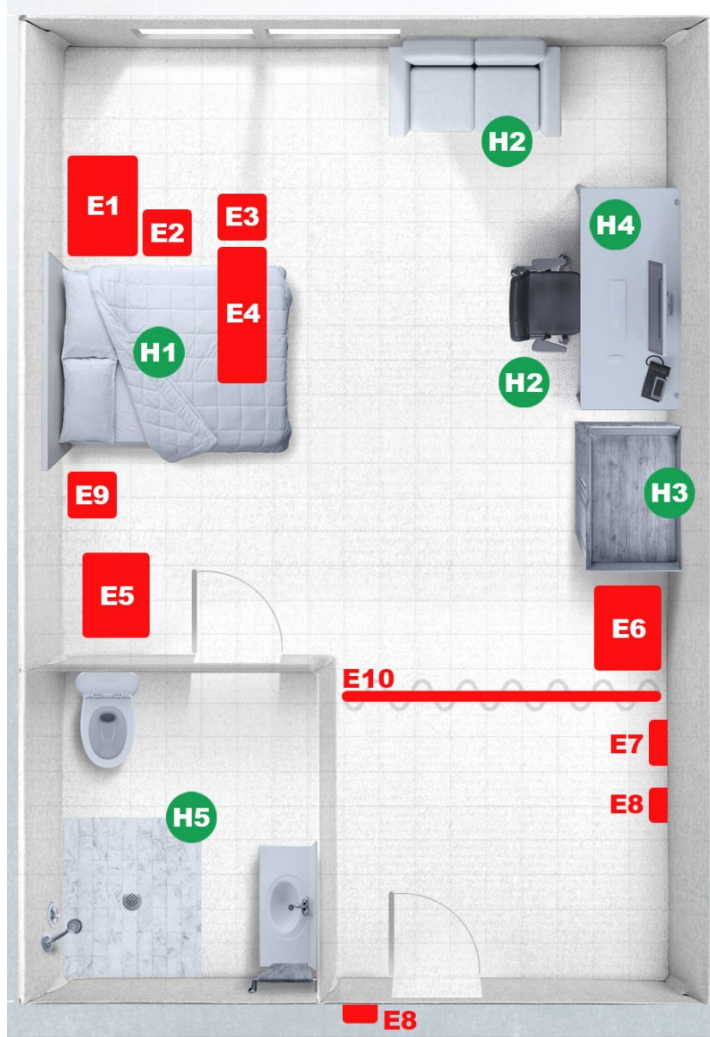
22 March 2020



**US Army Corps
of Engineers®**



H2HC - HOTEL ROOM to HEALTHCARE ROOM



HOTEL PROVIDED

- H1. HOTEL BED
*WITH MEDICAL LINENS
- H2. HOTEL/RECLINING CHAIR
- H3. HOTEL DESK
- H4. HOTEL WARDROBE
- H5. HOTEL PLUMBING FIXTURES

ENGINEERING CHANGES

- 1. REMOVE CARPET
- 2. INSTALL VINYL FLOORING OR EPOXY
- 3. *REVISE HVAC DUCTING AND HEPA FILTERING*
- 4. ADD EMERGENCY BACK-UP POWER & UPS
- 5. ADD ELECTRICAL OUTLETS
- 6. ADD PRIVACY CURTAIN

SPECIAL MEDICAL EQUIPMENT – TO BE PROVIDED BY OTHERS (NON-USACE)

- E1. VENTILATOR CAPABLE; STORAGE CABINET
- E2. TELEMETRY/PUMP ON IV STAND
- E3. STOOL
- E4. OVER BED TABLE
- E5. MOBILE WORK STATION
- E6. LINEN HAMPER
- E7. SHARPS/GLOVES
- E8. HAND SANITIZER STATION
- E9. INFECTIOUS WASTE
- E10. CUBICLE CURTAIN

PHASES

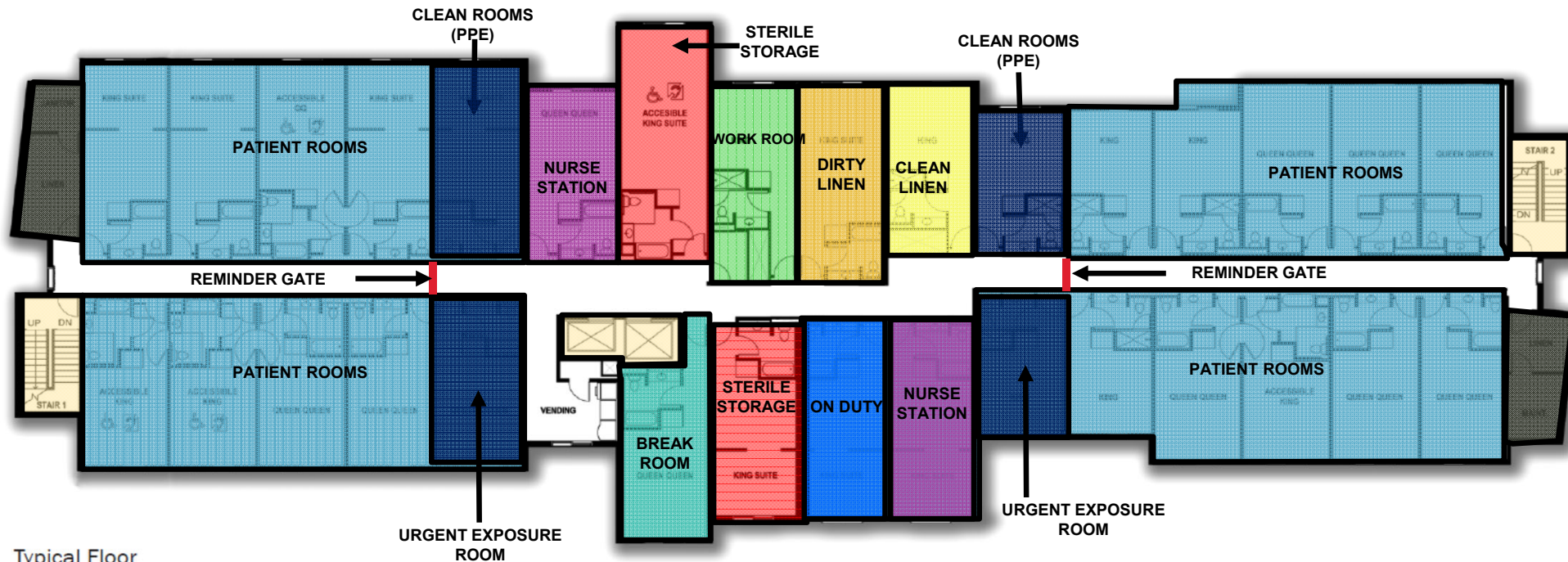
- 1. SITE (State)
- 2. BUILD (USACE)
- 3. SUPPLY (FEMA)
- 4. STAFF (State)

STANDARD DESIGN

*COVID
Non-COVID
Scalable, Tailorable,
Site Adaptable



H2HC - TYPICAL FLOOR PLAN



Typical Floor

HOTEL PROVIDED

1. HOTEL WI-FI
2. HOTEL PHONE SYSTEM
3. HOTEL IN-HOUSE NETWORK/TVs
4. HOTEL ICE MACHINE/VENDING
5. HOTEL PACKAGED HVAC

ENGINEERING CHANGES

1. MODIFIED ELEVATOR CONTROLS

STANDARD DESIGN

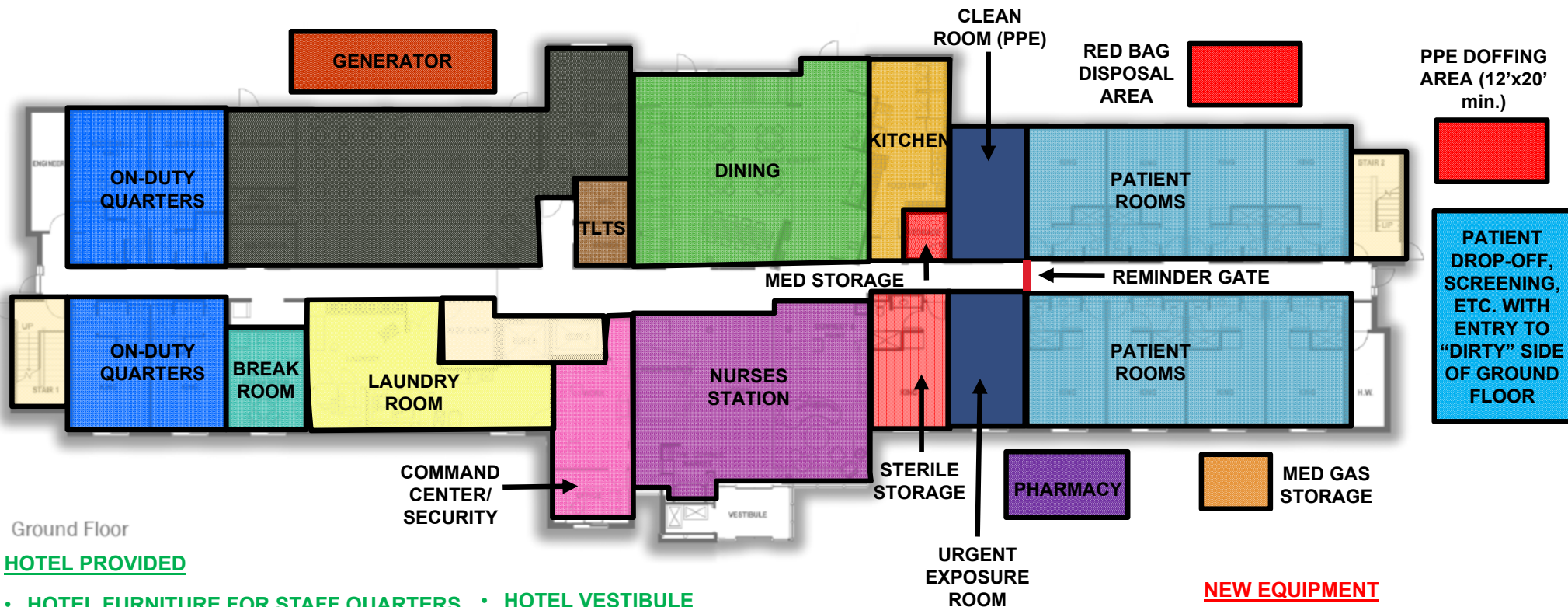
*COVID
Non-COVID
Scalable, Tailorable,
Site Adaptable

SPECIAL MEDICAL EQUIPMENT

1. NURSE CALL
2. STORAGE SHELVING
3. WORKSTATIONS
4. MED DISPENSING UNITS
5. # VENTILATORS / FLOOR
6. "CRASH" CART / FLOOR
7. REMINDER GATES
8. EYE/HAND WASH STATIONS



H2HC - GROUND FLOOR PLAN



Ground Floor

HOTEL PROVIDED

- HOTEL FURNITURE FOR STAFF QUARTERS
- HOTEL KITCHEN
- HOTEL DINING
- HOTEL VESTIBULE
- HOTEL CCTV FOR SECURITY
- HOTEL CARD READERS

STANDARD DESIGN

*COVID
Non-COVID
Scalable, Tailorable,
Site Adaptable

ENGINEERING CHANGES

- ALL TYPICAL FLOOR PLAN ADDITIONS
- PLUS GENERATOR

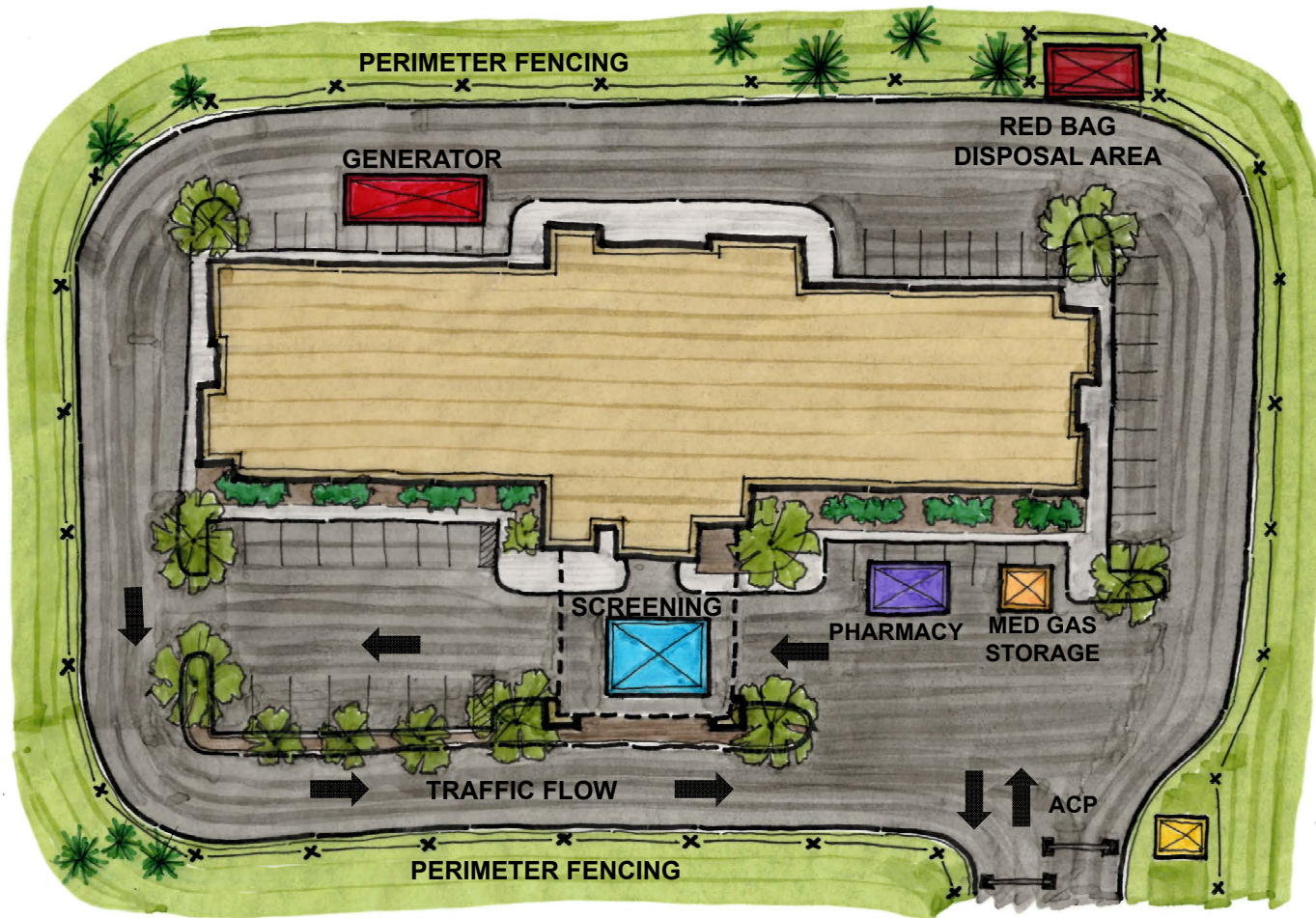
NEW EQUIPMENT

- METAL DETECTOR
- VTC FOR COMMAND CENTER
- CONTROLLED ACCESS
- INFECTIOUS/CLEAN
- REMINDER GATES
- EYE HANDWASH STATIONS



FOR OFFICIAL USE ONLY (FOUO)

H2HC – SITE IMPROVEMENT PLAN



ENGINEERING CHANGES

- ADD PERIMETER FENCING
- ADD GENERATOR
- ADD PATIENT SCREENING TENT
- ADD EXTERIOR PHARMACY
- ADD MED GAS STORAGE
- ADD ACCESS CONTROL POINT (ACP)
- ADD RED BAG DISPOSAL AREA

ARENA TO HEALTHCARE CONCEPT (A2HC) ALTERNATE HEALTHCARE FACILITY



**US Army Corps
of Engineers®**

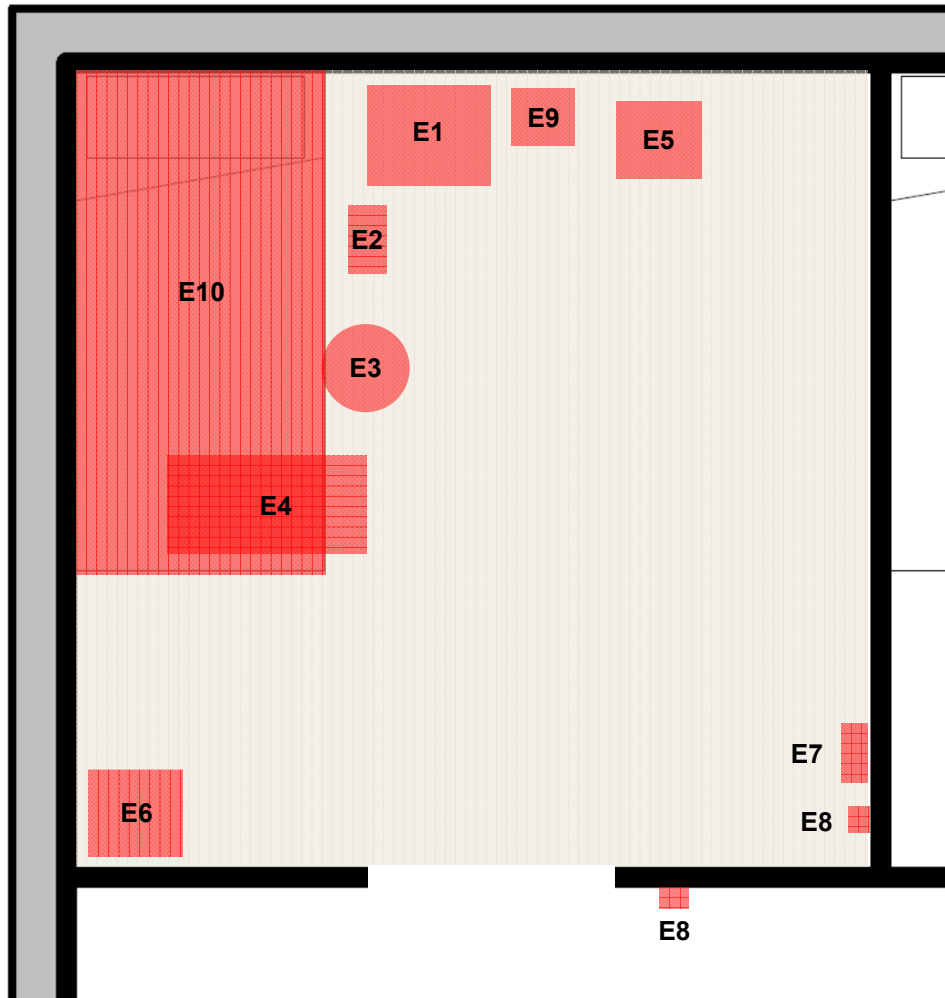


A2HC PATIENT CONTAINMENT EXAMPLE





A2HC TYPICAL POP-UP CARE SPACES



ENGINEERING CHANGES

1. ADD HVAC DUCTING AND HEPA FILTERING
2. ADD EMERGENCY BACK-UP POWER
3. ADD ELECTRICAL OUTLETS
4. ADD DATA OUTLETS
5. ADD PLUMBING

NEW EQUIPMENT - TO BE PROVIDED BY OTHERS (NON-USACE)

- E1. VENTILATOR CAPABLE; STORAGE CABINET
- E2. TELEMETRY/PUMP ON IV STAND
- E3. STOOL
- E4. OVER BED TABLE
- E5. MOBILE WORK STATION
- E6. LINEN HAMPER
- E7. SHARPS/GLOVES
- E8. HAND SANITIZER STATION
- E9. INFECTIOUS WASTE
- E10. PATIENT BED

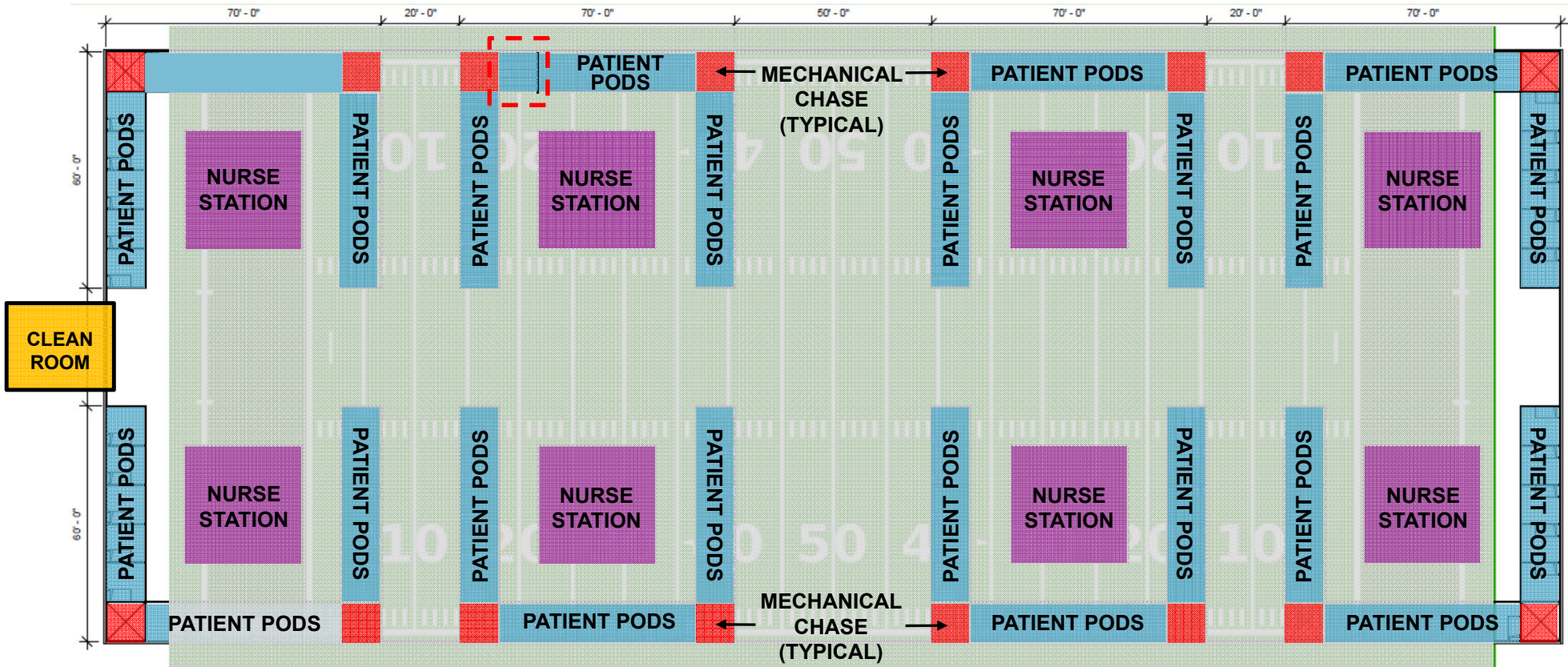


Bedside Toilet



A2HC TYPICAL LAYOUT

- 1 NURSE STATION FOR EACH 15 PATIENTS
- TOTAL OF 120 PODS

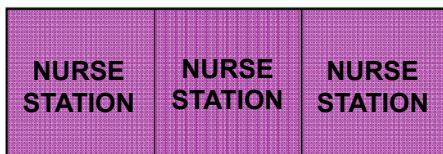


FACILITY PROVIDED

- FIELD HOUSE ICE MACHINE

ENGINEERING CHANGES

- ALL TYPICAL FLOOR PLAN ADDITIONS
- ADD GENERATOR



MEDICAL EQUIPMENT

- ALL TYPICAL FLOOR PLAN ADDITIONS
- NURSE CALL
- STORAGE
- WORKSTATIONS
- MED DISPENSING UNITS