



DESIGN COLLECTIVE®
by **cintas**.

WE HAVE YOU COVERED
Protect your employees and customers

WE'RE HERE TO HELP

Protecting your employees and customers is a priority, and Design Collective by Cintas is **ready™** to help.

- Simplify ordering by adding masks to your existing employee apparel program
- Easy online ordering on shop.myCintas.com
- North American based customer service at 800.864.3676
- Fast delivery through our state-of-the-art fulfillment center





A COMPLETE MASK OFFERING

Each business is unique and has different mask requirements. Our comprehensive product line has you covered.

- **Wide Selection:** From off the shelf to customized, and even flame-resistant, we have what you're looking for.
- **Styles:** With pleated, contour, and even Chef Works® branded masks you have your choice of mask styles.
- **Comfort:** Designed for comfort with fabrics including cotton, polyester, moisture wicking features, and even stretch.
- **Easy Care:** All masks are washable and can be reused.

Face masks have not been cleared or approved by the U.S. Food and Drug Administration (FDA). This product has been authorized by FDA under an Emergency Use Authorization (EUA) for use as source control by the general public as well as healthcare professionals in healthcare settings as to help prevent the spread of infection or illness during the COVID-19 pandemic. Cintas is marketing all face masks under the terms of this EUA, and these face masks are currently authorized for marketing by the FDA only for as long as the public health emergency remains in effect. Cintas expressly disclaims all implied warranties including any implied warranty of merchantability or fitness for particular purpose. Further, Cintas makes no warranties, express or implied, that these masks prevent infection or the transmission of viruses or diseases or that the masks contain any antimicrobial, antiviral, or antipathogenic qualities. The masks should not be used (1) in any surgical setting or where significant exposure to liquid, bodily or other hazardous fluids, may be expected; (2) in a clinical setting where the infection risk level through inhalation exposure is high; or (3) in the presence of a high intensity heat source or flammable gas.

COTTON KNIT FACE MASK

100% cotton knit. 3-ply fabric. Silkscreen logo available with 1,200 minimum. Washable and reusable. Laundry care: machine wash warm, tumble dry. Non-returnable.

Case (600 units):

117693 (20) Navy, (32) Light Grey

Bundle (10 units):

117694 (20) Navy, (32) Light Grey

117693 and **117694**

20

32

READY TO
WEAR





PREMIUM CONTOUR FACE MASK

Water repellent 100% polyester outer shell. 100% cotton inner lining. 2-ply fabric. No logo application available. Washable and reusable. Laundry care: hand wash, air dry. Non-returnable.

Case (300 units):

117711 (32) Dark Grey

Bundle (25 units):

117709 (32) Dark Grey

117711 and **117709**

32





FROM CHEF WORKS®, THE BRAND YOU LOVE, WE PRESENT THE **SKILD Series™**

Flex nose arch

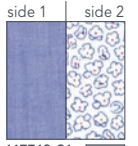
Reversible

Soft-coated metal wire

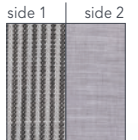
Lightweight/breathable

Comfortable chin cradle

Adjustable soft elastic bands



117713-21 (blue) BLU 21



117713-32 (light grey) GRY 32



117713-33 (charcoal) CHR 33

READY TO WEAR



CW bug at bottom right corner, solid (side 1) only



Adjustable toggle lock

CHEF WORKS® REVERSIBLE CONTOUR FACE COVERING

SKILD Series™ FC1 Face Covering. Light Grey is 65/35 polyester/cotton solid and 62/38 cotton/polyester stripe. Charcoal and blue are 65/35 polyester/cotton. 2-ply fabric. Reversible. Flex Nose Arch. Soft coated metal along the contour seam. Chin cradle. No logo application available. Chef Works® fork logo on one side. Washable and reusable. Laundry care: Machine wash warm, gentle cycle with like colors, no hotter than 105 degrees F, non-chlorine bleach when needed, hang to dry, do not iron, do not dry clean. Non-returnable.

Case (300 units):

117714 (21) Blue, (33) Charcoal, (32) Light Grey

Bundle (6 units):

117713 (21) Blue, (33) Charcoal, (32) Light Grey

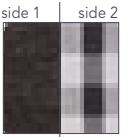


Flex wire on nose

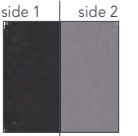
Contoured panel design

Lightweight/breathable

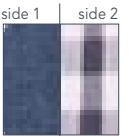
Reversible/washable/reusable



XFC02-BLK
(black)



XFC02-BGY
(black/gray)



XFC02-IBL
(indigo blue)

Adjustable
ear loops

READY TO
WEAR





CW bug at bottom right corner, solid (side 1) only

Adjustable ear loop

CHEF WORKS® FC2 FACE COVERING

SKILD Series™ FC2 Face Covering. Black is 100% cotton black denim and 65/35 polyester/cotton gingham on reverse side. Indigo is 100% cotton black denim and 65/35 polyester/cotton gingham on reverse side. Black/Gray is 64/34/2 polyester/cotton/elastane black and 65/35 polyester cotton gray on reverse side. Adjustable ear loops. Contoured panel design. Flex wire on nose. Reversible. Washable and reusable. Laundry care: Machine wash warm, gentle cycle with like colors, no hotter than 105 degrees F, non-chlorine bleach when needed, hang dry, do not iron, do not dry clean. Non-returnable.

Bundle (6 units):

117770 (21) Indigo Blue, (32) Black Gray, (35) Black

*Available late August, 2020



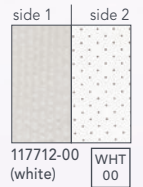
Flex nose arch

Reversible

Accordion-style pleats

Lightweight/breathable

Adjustable
soft elastic bands



READY TO
WEAR



CW bug at bottom right corner, solid (side 1) only



Adjustable toggle lock

CHEF WORKS® REVERSIBLE PLEATED FACE COVERING

SKILD Series™ FC3 Face Covering. 65/35 polyester/cotton fabric. 2-ply fabric. Reversible. Flex nose arch. No logo application available. Chef Works® fork logo on one side. Washable and reusable. Laundry care: Machine wash warm, gentle cycle with like colors, no hotter than 105 degrees F, non-chlorine bleach when needed, hang to dry, do not iron, do not dry clean. Non-returnable.

Bundle (6 units):

117712 (21) Blue, (32) Light Grey, (00) White



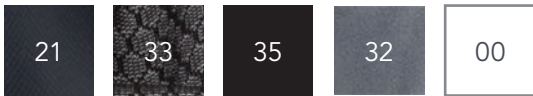
Lightweight/breathable

Wear 4 ways

Convenience: Easy on and easy off

Washable/reusable

117716



Blue Grey Honeycomb Black Grey White

READY TO
WEAR





Wear as a beanie



Adjustable toggle lock

CHEF WORKS® NECK GAITER

SKILD Series™ FC4 Face Covering. Cool Vent™ fabric (on black, blue and white) this face covering is washable and reusable and can also be worn as a beanie, headband or head scarf. Adjustable toggle lock. Black is 91% polyester, 9% spandex. Blue and Grey are 100% polyester. Grey Honeycomb is 94% polyester, 6% spandex with a black band 91% polyester and 9% spandex. White is 100% polyester with grey band 100% polyester. Non-returnable.

Case (216 units):

117717 (21) Blue, (33) Grey Honeycomb

Bundle (6 units):

117716 (21) Blue, (33) Grey Honeycomb, (35) Black, (32) Grey, (00) White



Adjustable clips attach to all headwear

Lightweight/breathable

Flex wire on nose or chin

Outside fabric is moisture wicking



XFC05-BLK
(black)



XFC05-WHT
(black)

READY TO
WEAR





Rotate FC5 bottom to top for a wider fit

CHEF WORKS® FC5 FACE COVERING

SKILD Series™ FC5 Face Covering. 100% polyester moisture wicking outer shell and 64/34/2 polyester/cotton/elastane inside. Adjustable clips attach to headwear. Rotates 180 degrees to accommodate all face sizes. Flex wire on either nose or chin. Washable and reusable. Laundry care: Machine wash warm, gentle cycle with like colors, no hotter than 105 degrees F, non-chlorine bleach when needed, hang dry, do not iron, do not dry clean. Non-returnable.

Bundle (6 units):

117771 (00) White, (35) Black

*Available late August, 2020

CUSTOMIZABLE FACE MASKS

CUSTOMIZABLE PERFORMANCE KNIT MASK

100% Polyester Knit. 2-ply fabric. Moisture wicking.
Washable and reusable. Laundry care: machine wash warm,
tumble dry. Logo sublimation available. Consult with Design
Collective team regarding color availability.

Custom order. 6,000 unit minimum. 5-6 week delivery.
Non-returnable.



CONTEMPORARY CONTOUR FACE MASK

100% Polyester Woven. 3 ply - 2 ply fabric, 1 interlining layer. Cord at ears. Adjustable toggle. Washable and reusable. Laundry care: machine wash warm, tumble dry. Logo sublimation available.

Custom order. 25,000 unit minimum. 8 week delivery. Non-returnable.



CUSTOMIZABLE FACE MASKS

MULTIBAND FACE MASK

93% polyester/7% spandex. Moisture wicking. Washable and reusable. Laundry care: machine wash warm, tumble dry. Logo sublimation available. Consult with Design Collective team regarding color availability.

Custom order. 6,000 unit minimum. 5-6 week delivery. Non-returnable.



FOURMY ESSENTIAL FACE MASK

55/45 Cotton/Polyester corded fabric (colors 17, 34, 40, 57) or 65/35 Poly Viscose linen look fabric (colors 13, 20, 29, 30, 33, 45, 46). White flat elastic ear loop. Side tucks allow easy expansion for fuller coverage. Washable and reusable. Laundry care: machine wash warm, tumble dry. No logo available.

Custom order. 100 unit minimum. 3 week delivery. Non-returnable.

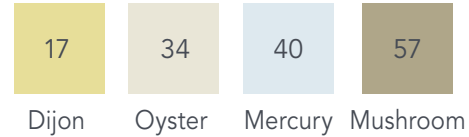
Bundle (25 units):

803118 (colors 17, 34, 40, 57) and **803119** (colors 13, 20, 29, 30, 33, 45, 46)

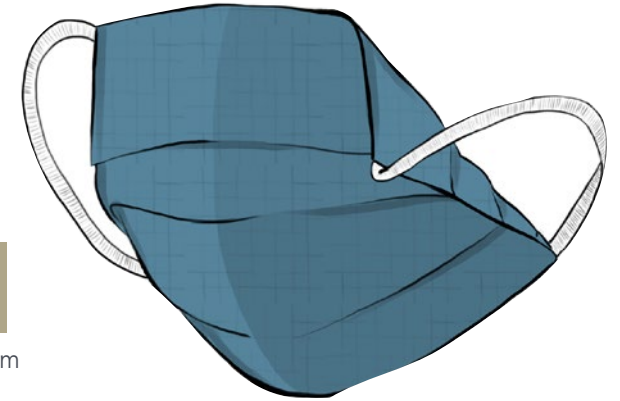
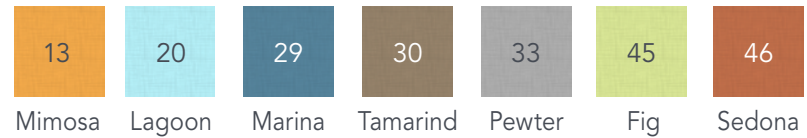
Bundle (5 units):

803121 (colors 17, 34, 40, 57) and **803122** (colors 13, 20, 29, 30, 33, 45, 46)

803121 and 803118



803122 and 803119



FOURMY SIGNATURE FACE MASK

Product Copy: 55/45 Cotton/Polyester corded fabric (colors 17, 34, 40, 57) or 65/35 Poly Viscose linen look fabric (colors 13, 20, 29, 30, 33, 45, 46). Adjustable white rounded elastic ear loop for easy fit. Contour shape. Washable and reusable. Laundry care: machine wash warm, tumble dry. No logo available.

Custom order. 100 unit minimum. 3 week delivery. Non-returnable.

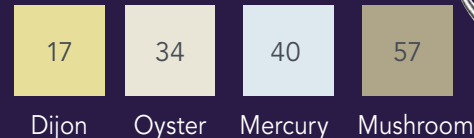
Bundle (25 units):

803120 (colors 17, 34, 40, 57) and **803125** (colors 13, 20, 29, 30, 33, 45, 46)

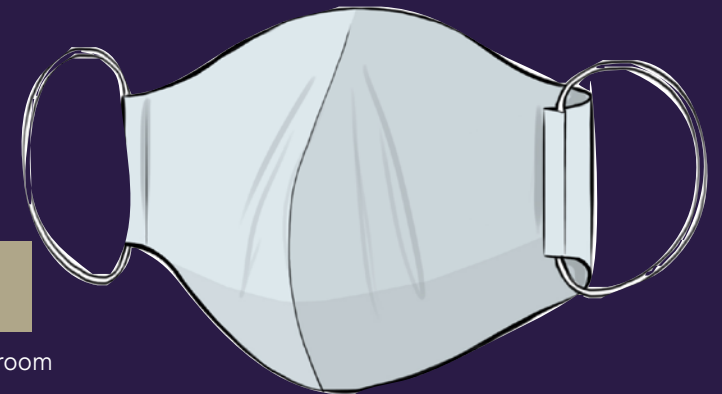
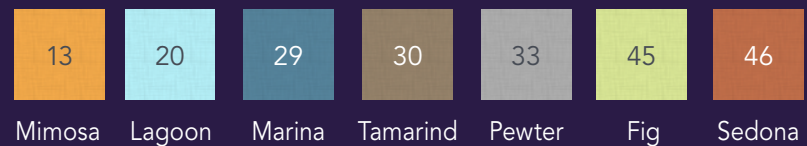
Bundle (5 units):

803123 (colors 17, 34, 40, 57) and **803124** (colors 13, 20, 29, 30, 33, 45, 46)

803123 and 803120



803124 and 803125



CUSTOMIZABLE FACE MASKS

Matte Jersey and
Fusion™ Fabrics

AROUND THE EAR CUSTOM MASK AROUND THE HEAD CUSTOM MASK

Stretch border in 94/6 Polyester/Spandex fabric. Core fabric in either 94/6 Polyester/Spandex fabric or Fusion™ 100% Polyester*. 2-ply design, with internal pouch. Single color screen print available when using Fusion 100% Polyester. Washable and reusable. Laundry care: machine wash cold on gentle cycle, do not use fabric softeners, non-chlorine bleach only if needed, tumble dry.

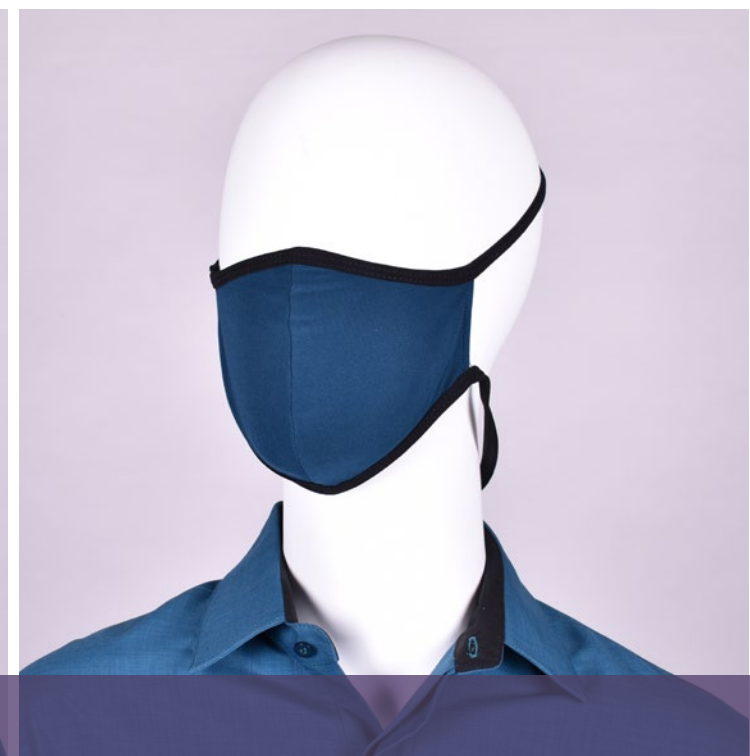
Custom order. 1,000 unit minimum. 4-6 week delivery. Add 1-2 weeks for screen printing. Sizes medium, large and extra-large. Non-returnable.



AROUND THE EAR CUSTOM MASK



AROUND THE HEAD CUSTOM MASK



Fusion™



Matte Jersey



* If Fusion fabric is selected as the core fabric, the border is only available in black Matte Jersey

SUBLIMATED AROUND THE EAR FACE MASK

100% filament polyester outer shell and 100% soft spun polyester lining.
2-ply design with internal filter pocket.
Sublimated print per client's artwork.
Washable and reusable. Laundry care: machine wash cold on gentle cycle, do not use fabric softeners, non-chlorine bleach only if needed, tumble dry.

Custom order. 1,000 unit minimum. 6-8 week delivery. Sizes medium and large.
Non-returnable.



FLAME RESISTANT FACE MASKS

ARIAT FR MASK

GlenGuard® 5.3 oz. fabric. Moisture wicking. 74% meta-aramid, 20% modacrylic, 5% para-aramid, 1% antistatic. APTV 9.5; CAT 2. Washable and reusable. Machine wash, tumble dry. Non-returnable.

Single units: **044655** (32) Grey

CARHARTT® FR BALACLAVA

48% modacrylic/48% Tencel®/4% spandex. 6-ounce. 2-ply FR knit. ATPV 15/ARC 2 Carhartt Force® fights odor and its FastDry® technology wicks away sweat for comfort. Full facial protection that extends below the neckline. Meets the performance requirements of NFPA 70E. Washable and reusable. Laundry care: Machine wash cold, tumble dry low. No fabric softeners. Non-returnable.

Single units: **009589** (20) Navy

044655

32



009589

20



TIE BACK FR FACE MASK

6 oz. fabric. 93 cotton/7% spandex. Moisture management characteristics. APTV 8.1; CAT 2. Machine washable and reusable. Non-returnable.

Bundle (10 units): **044284** (20) Navy

044284

20



ELASTIC BACK FR FACE MASK

6.5 oz. Westex® DH fabric. ATPV 8.9; CAT 2. Machine washable and reusable. Non-returnable.

Bundle (10 units): **044312** (20) Navy

044312

20

PURSUANT TO OSHA REGULATIONS, 29 CFR 1910.132 (SUBPART I), AN EMPLOYER BEARS SOLE RESPONSIBILITY FOR SELECTING THE TYPE(S) OF PERSONAL PROTECTIVE EQUIPMENT TO BE USED BY ITS EMPLOYEES. ALL PURCHASERS OF FRC GARMENTS AND/OR LAUNDERING SERVICES FROM CINTAS BEAR FULL RESPONSIBILITY FOR SELECTING THE PPE APPROPRIATE FOR USE BY THEIR EMPLOYEES. CINTAS MAKES NO REPRESENTATION, WARRANTY, OR COVENANT WITH RESPECT TO THE FLAME-RESISTANT QUALITIES OF THE GARMENTS OR WITH RESPECT TO THE FITNESS OR SUITABILITY OF THE GARMENTS FOR ANY PARTICULAR USE OR PURPOSE. THE PURCHASE OF ANY GOODS OR SERVICES FROM CINTAS IS SUBJECT TO CINTAS'S STANDARD TERMS AND CONDITIONS AND/OR ANY OTHER APPLICABLE WRITTEN CONTRACT EXECUTED BETWEEN THE PURCHASER AND CINTAS RELATING TO SUCH PURCHASE.

ADDITIONAL AVAILABLE SERVICES

- Surface Sanitizer and Disinfectant Spray Services*
- Hand sanitizer and stands
- Microfiber mops and towels
- Tile & Carpet Deep Cleaning
- Disinfectant Wipes
- Signet® cleaning chemical service
- Automatic soap and paper towel dispensers
- A/C coil cleaning service
- Professionally laundered apparel and mats

To learn more about these services please visit [cintas.com](https://www.cintas.com).

**Available in select markets*

800.864.3676 | [SHOP.MYCINTAS.COM](https://shop.mycintas.com)

APPAREL | FACILITY SERVICES | FIRST AID & SAFETY | FIRE PROTECTION

DESIGN COLLECTIVE®
by **cintas**